

THE OVAL DUPLEXES OF NEWFOUNDLAND AND THEIR LOOK-ALIKE

Among the least seen of Newfoundland town date stamps, the oval duplex instruments were first put into use at various post offices in 1898 and issued up until 1901 only. These devices were for newly opened offices and name changes. Further research indicates that an additional 4 locations have been discovered and it is quite possible that more may surface in the future.

All markings are consistent with the following:

1. A 3 line dater
2. All enclosed in a rimmed circle a la CDS
3. NEWFOUNDLAND spelled in full
4. A period after NEWFOUNDLAND
5. A comma after the place name
6. A 13 bar oval obliterator



Figure 2. Tizzard's Harbour NF duplex, bottom view



Note error DN BAY in lieu of ND BAY

Photos BNA Topics No. 500

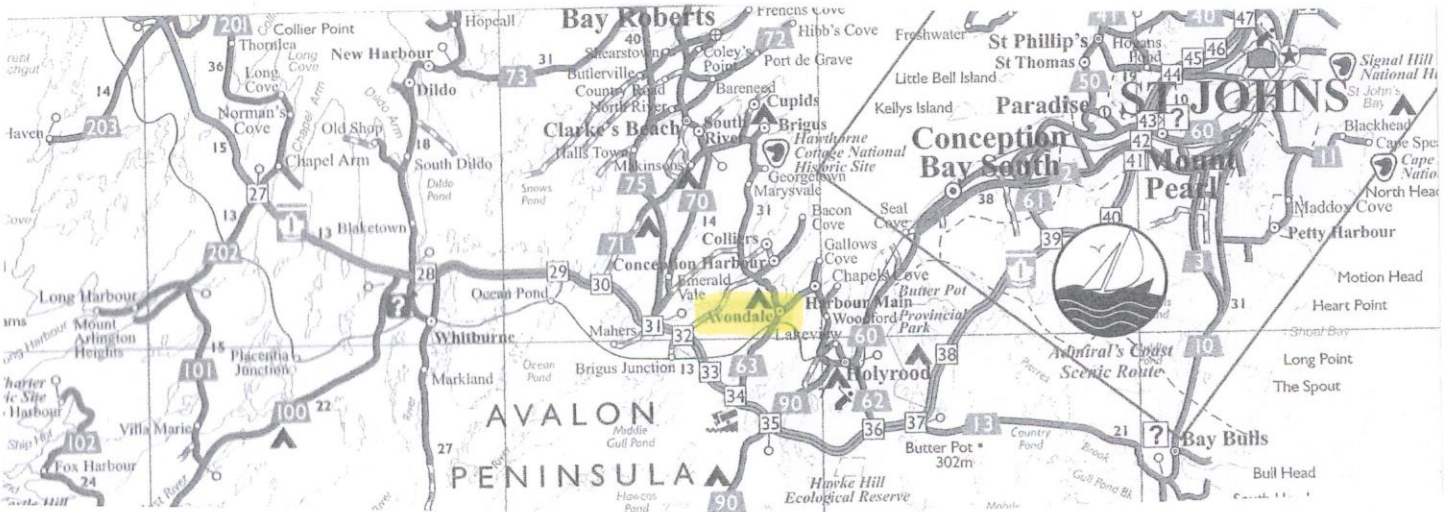
It is not known who the manufacturer was, although there is an almost identical format of the hub portion of many American Duplexes of the same era with only differences in the obliterator portion. Unlike Canada, the U.S. postal service used more than one manufacturer for its town date stamps and did not have "Proof Books." In this example the circle is larger and the addition of a time slug appears, however the comma after place name and period after state remain, showing a family resemblance.



Please note that the St. John's duplex with the 9 bar circular obliterator of the same time frame was made by Pritchard & Andrews of Ottawa and is not relevant to this study. The majority of duplexes in Canada during this time frame used the circular obliterator.

AVONDALE

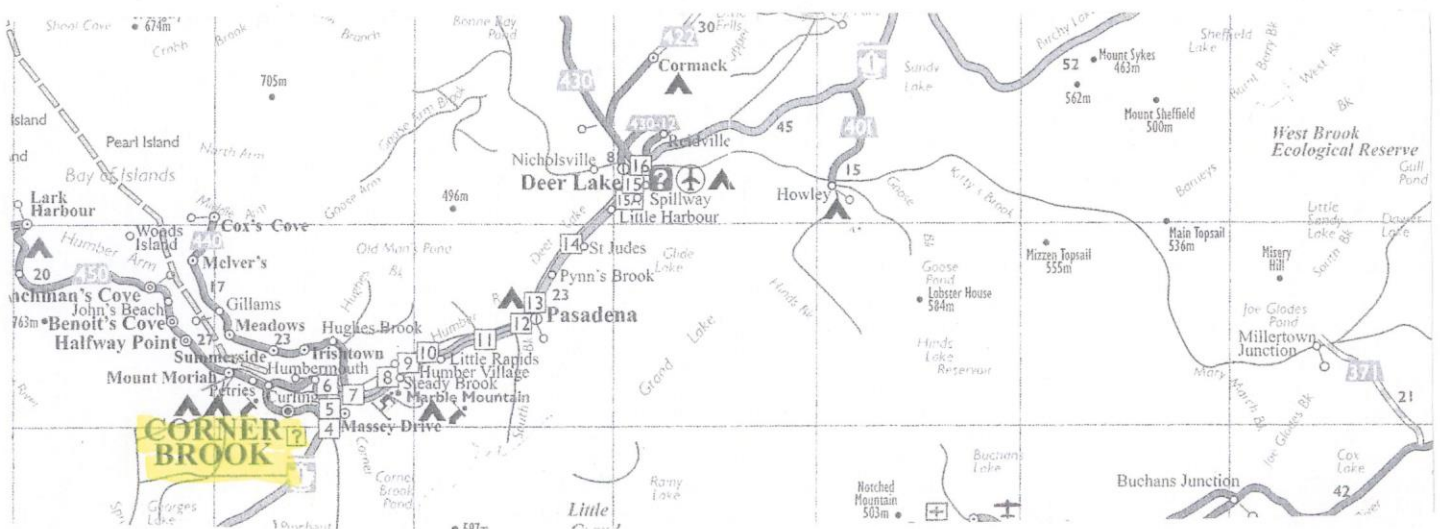
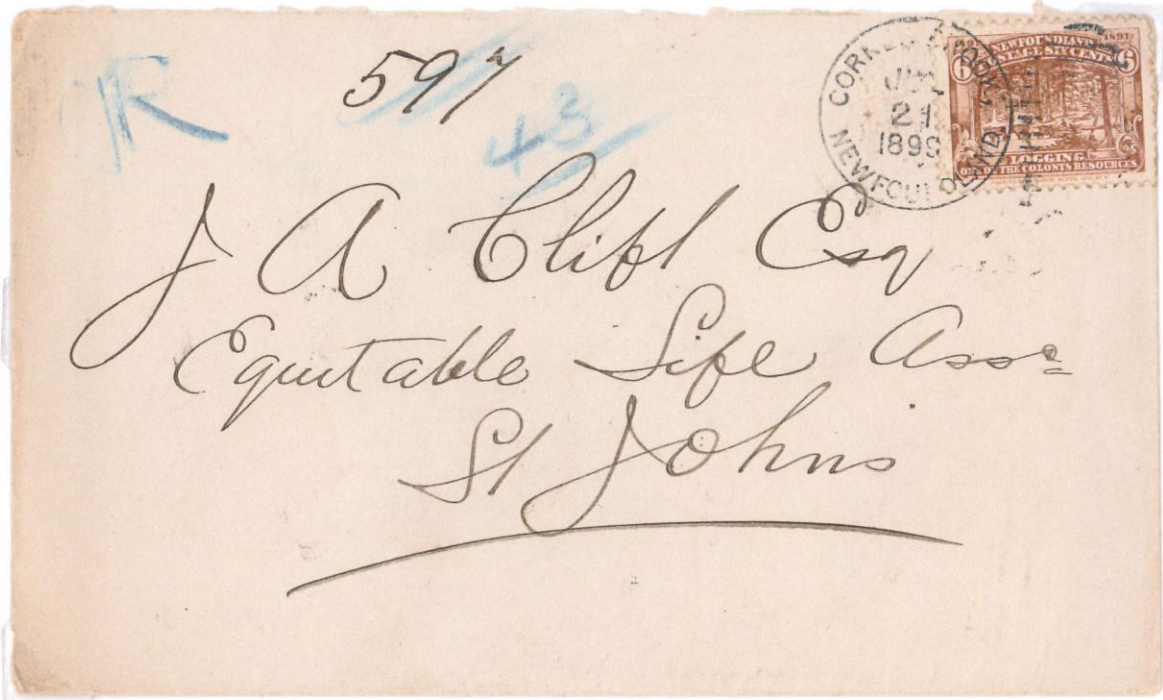
Avondale was opened in 1899. The previous office was called Salmon Cove (Harbor Main.) The name change occurred because there were five other operating post offices in Newfoundland called Salmon Cove. The first postmaster was Edward Kennedy. Avondale is located at the Head of Conception Bay.



There are 7 recorded copies known for this duplex.

CORNERBROOK

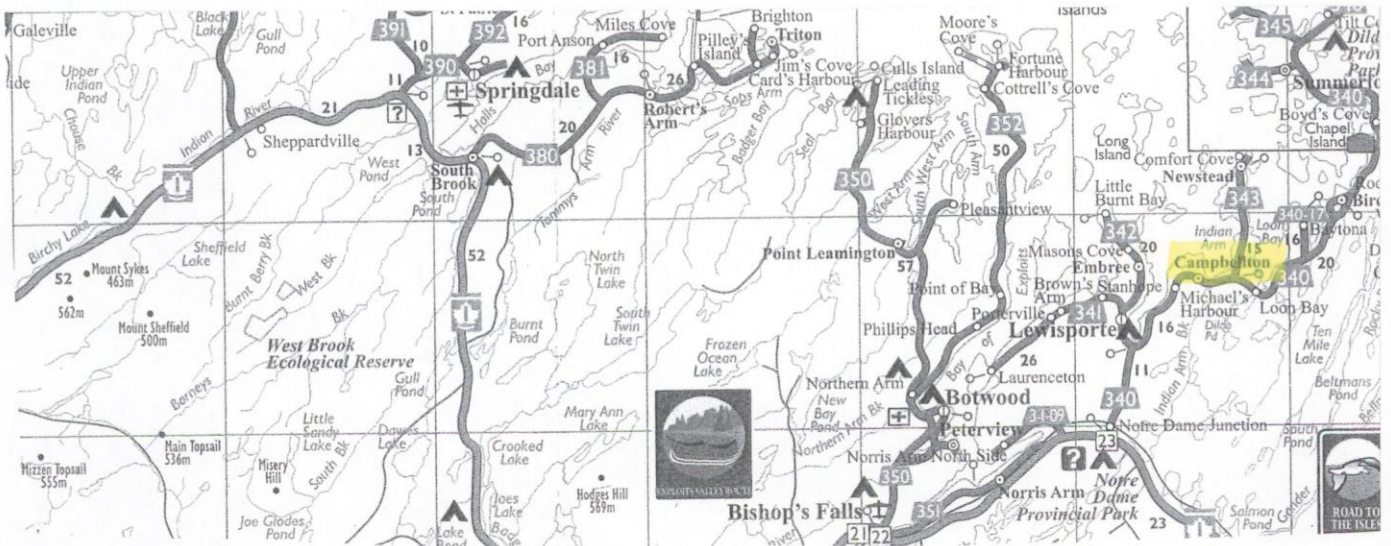
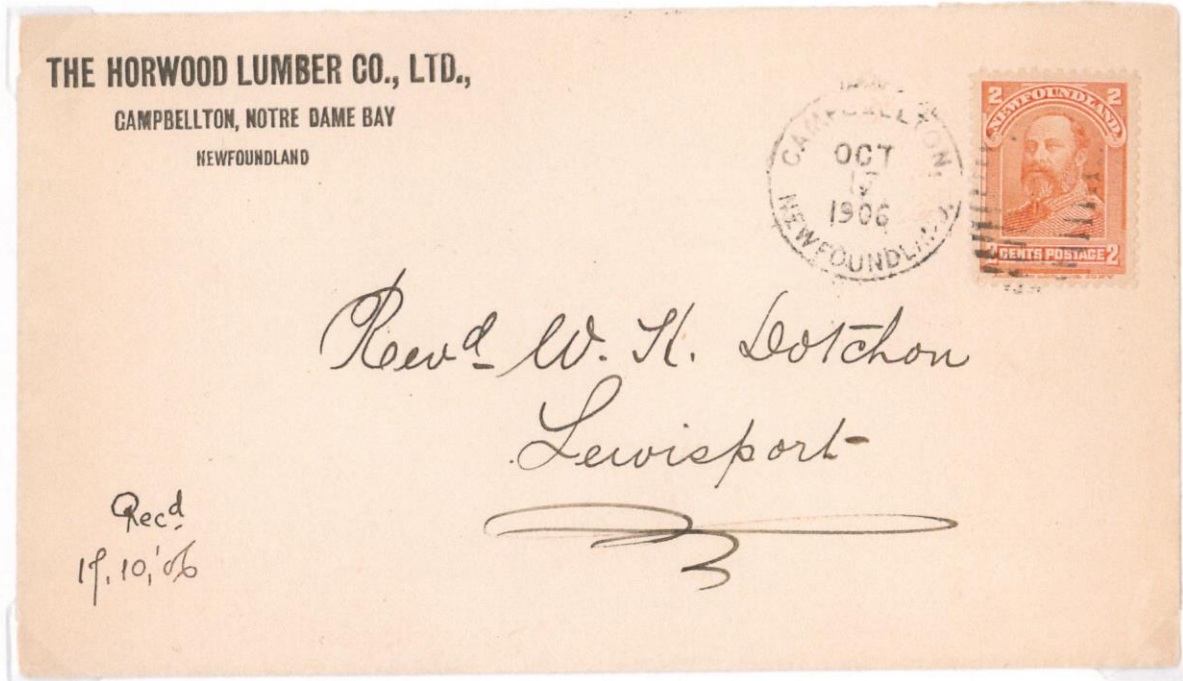
Cornerbrook became a way office in 1888 with Cristopher Fisher as waykeeper. Became a post office in 1898 with John A. Farrell as first postmaster. Cornerbrook is located on Humber Arm of Bay of Islands.



There are 9 recorded copies of this duplex on cover and many partial strikes on stamps. Of all locations using the duplex devices, Cornerbrook had the largest population base.

CAMPBELLTON

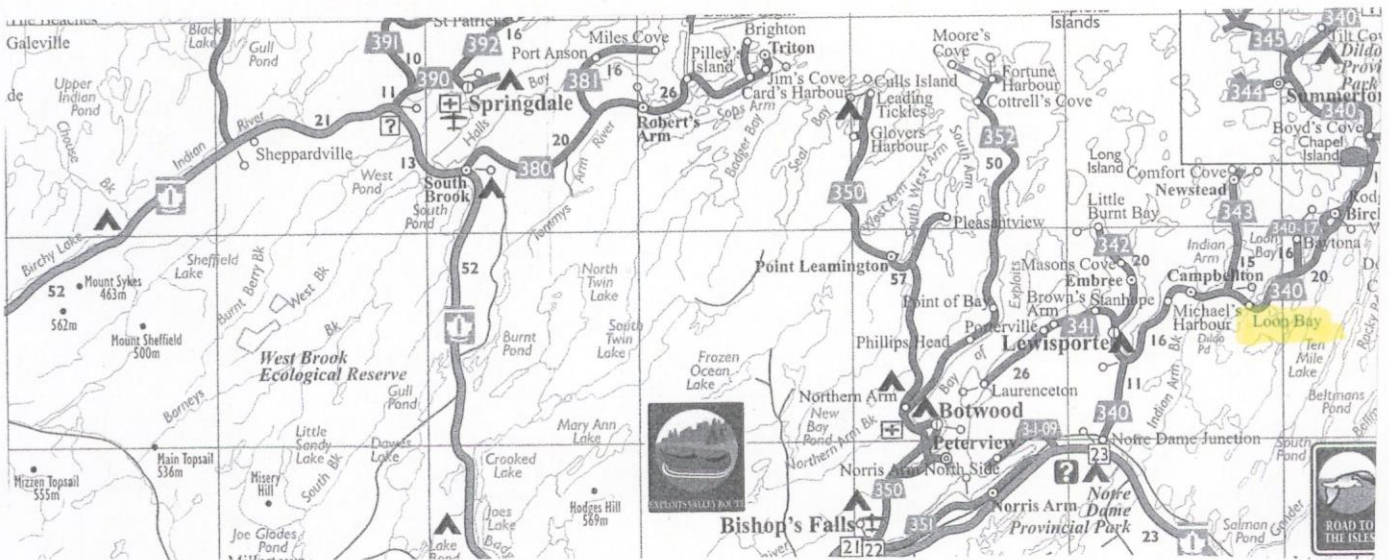
This post office opened in 1900 with the first postmaster being Alfred Young. The location was on Indian Arm, the next bay over from Lewisporte which was the terminus of the government mailboats. A large lumbering business and sawmill were located here.



There are 4 recorded copies of this duplex and 1 as a transit mark.

LOON BAY

This duplex was issued in 1898 as a result of a name change. The post office was previously known as **LOADING WHARF LITTLE BAY** from 1891 to 1898 and a split ring device was proofed under that name. The first postmaster was Robert Roberts.



It is not known how many examples of this instrument exist on cover or stamp. One other is shown in the next panel.

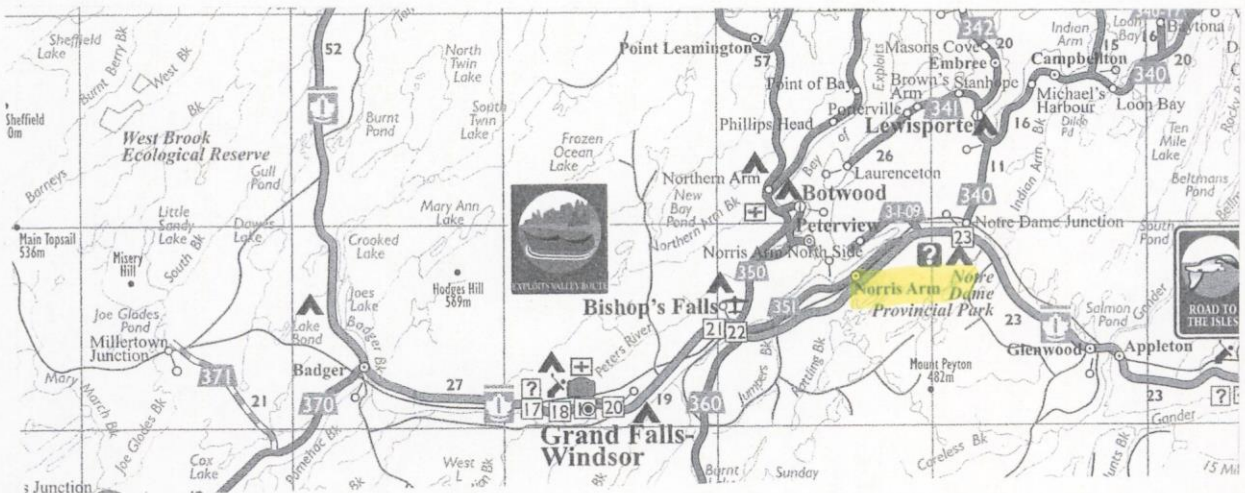
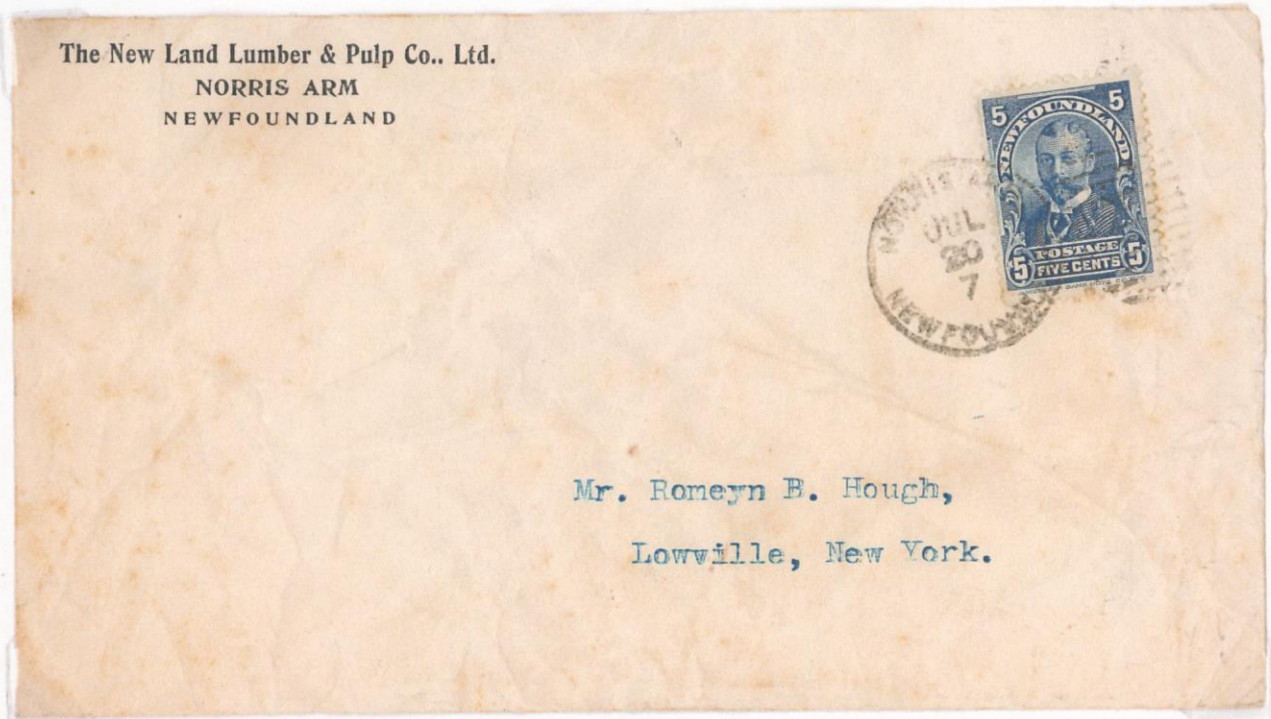
LOON BAY TO LEWISPORTE

This is quite possibly a unique cover. There are 2 duplex impressions, one an originating strike from LOON BAY and the other a transit strike from CAMPBELLTON. Of all post offices known to have received these devices, these two are the only ones that were in close proximity with one another.



NORRIS ARM

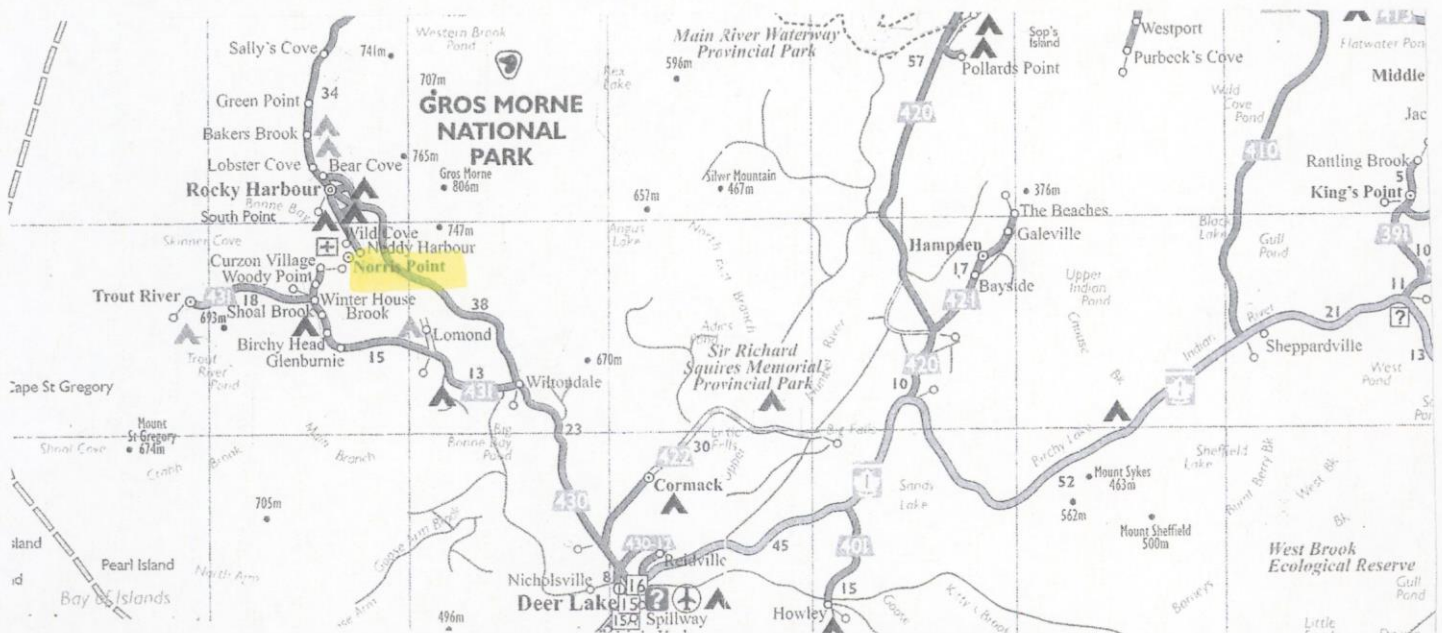
Norris Arm opened in 1899 and is located on the rail line at the bottom of Exploits Bay near Botwood. The first postmaster was Charles Pittman. Distribution would have been by rail rather than mail boat.



There are 10 recorded copies of this duplex

NORRIS POINT

The Norris Point post office opened in 1899. The first postmaster was John A. Squires. This office is located in Bonne Bay and today is an enclave of Gros Morne National Park. Distribution in January would have been from Bonne Bay post office (Woody Point) and by overland courier to the Deer Lake railway station.



There are 8 recorded copies of this marking

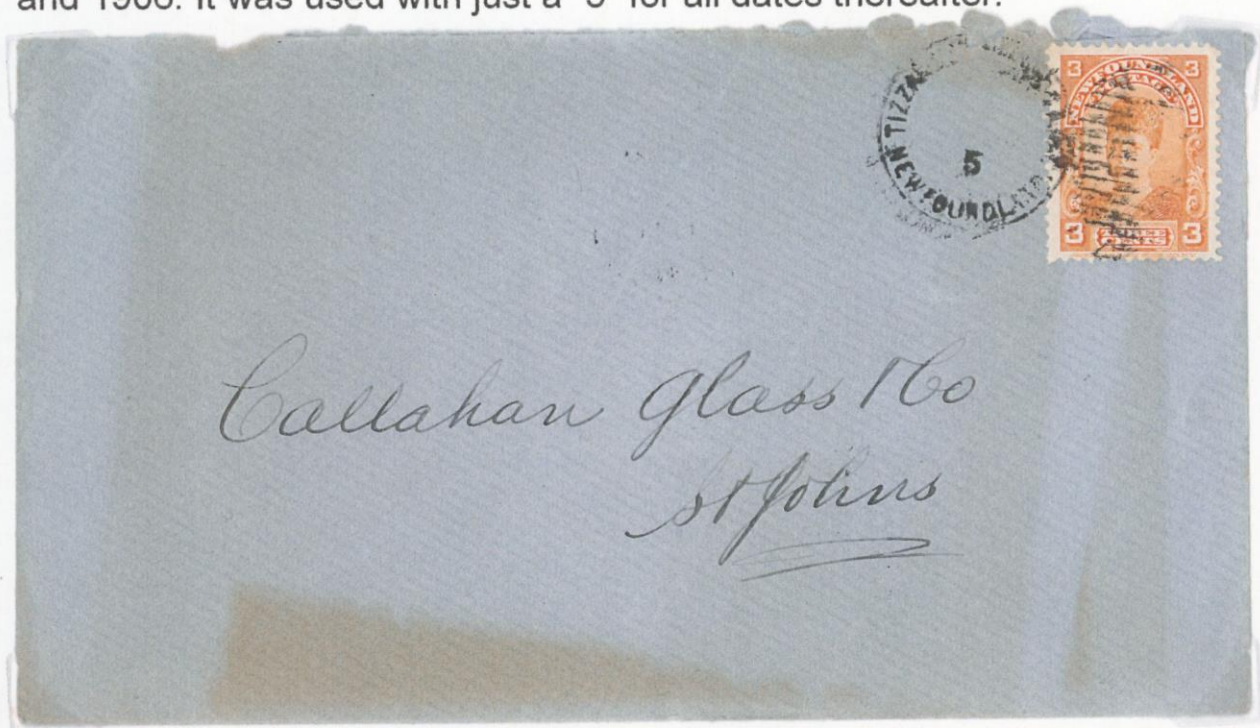
TIZZARD'S HARBOR

Opened in 1889 as a way office with Joseph Bona as waykeeper. Became a post office as did ALL of Newfoundland's former way offices in 1891. It appears that this was a replacement device for a former split ring. Tizzard's Harbour was located on New World Island in Notre Dame Bay and distribution would have been by mail boat via Moreton's Harbor.



BNA Topics No. 500

This instrument apparently lost its dating indicia sometime between 1903 and 1906. It was used with just a "5" for all dates thereafter.

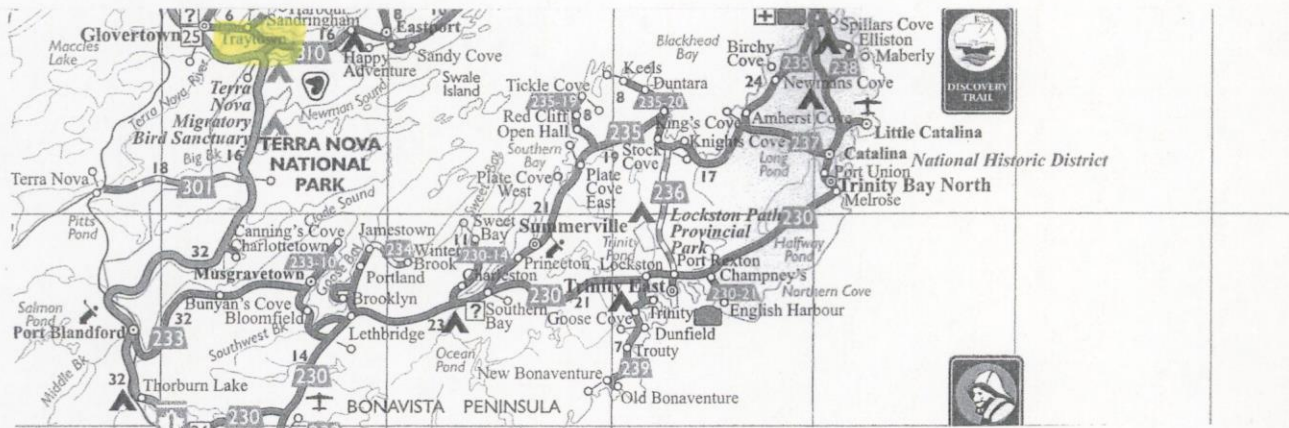


Backstamp of April 26 1906 No. of surviving covers not known.

TRAYTOWN

Traytown is located at the head of Bonavista Bay near present day Glovertown. This post office opened in 1900. The distribution would have been by rail at Alexander Bay Station. First postmaster was Charles Kean.

B. BAY for Bonavista Bay



Number of surviving strikes not known.

THE FOUR NEW DISCOVERIES

NORTHERN ARM EXPLOITS

A complete postcard with a strike of "NORTHERN ARM EXP.B" with an oval duplex was in the collection of the Late Brian Noble. Ref. BNAPS Newfie Newsletter No. 41 pg. 4 Mar./Apr. 1993.

SHIP HARBOR

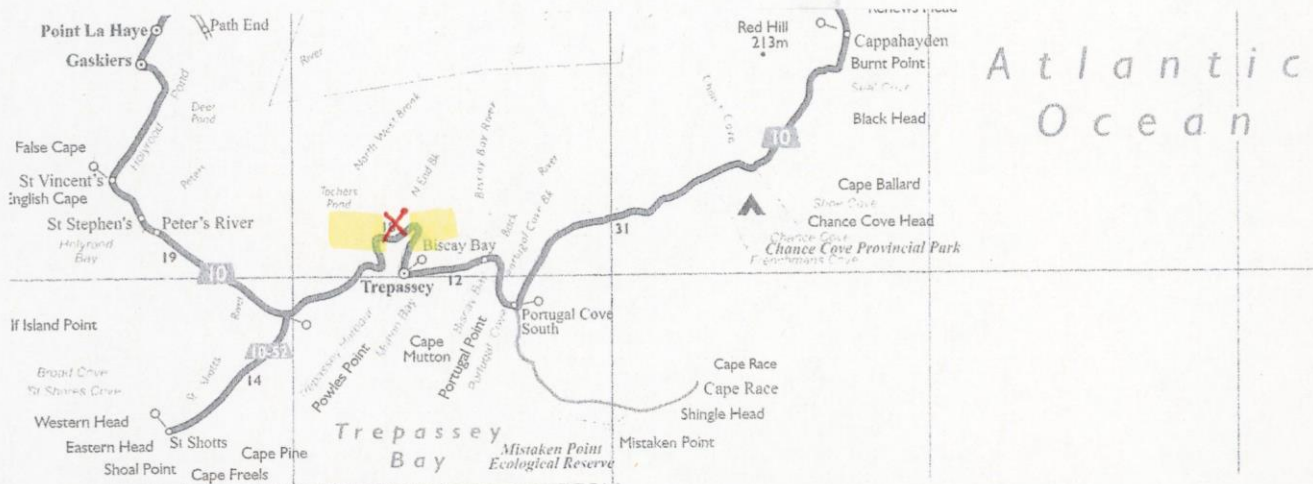
Ship Harbor is located on Placentia Bay and first opened in 1899 with Jane Ann Power as the first postmaster. Distribution was by Placentia Bay RWY.



This is not a circular date stamp. The only place a CDS was in use in all of NEWFOUNDLAND during this time frame was St. John's and N&W Railway TPO. The full type probably read SHIP HARBOR P. BAY.

DANIEL'S POINT

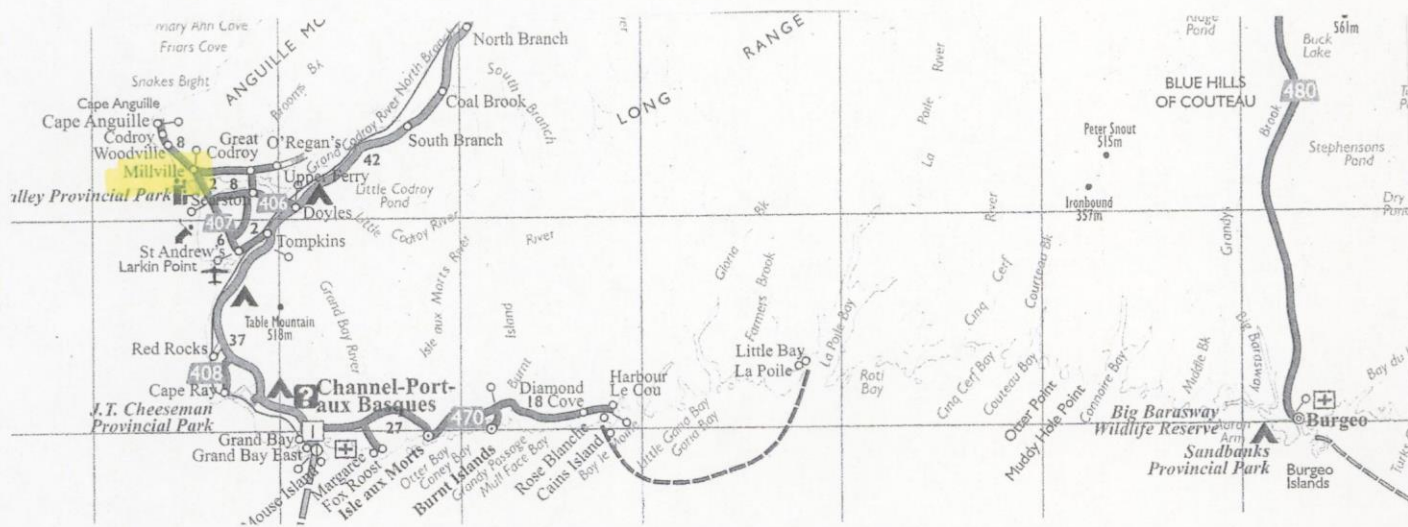
Daniel's Point is located on the coast of Southern part of Avalon Peninsula near Trepassey. This office opened in 1898 with Alice Finlay as first postmaster.



Mail for this location was via courier from Trepassey and later on by train from Trepassey Station.

MILLVILLE

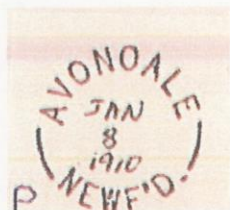
Millville was located on the Southwest coast at the mouth of the Great Codroy River. This office opened in 1898. First postmaster was Alexander Gayle.



Mail distribution was by rail from Doyles Station to Millville by courier.

How Long Did The Duplex Hammers Last ?

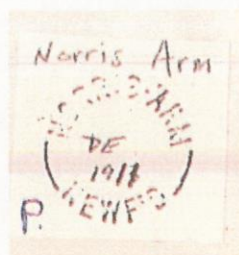
ALL Duplex hammers were eventually replaced by Pritchard & Andrews split ring instruments, some in 11 or 12 years. Four of the locations are covered in the "Proof Books." Five others are known only by the earliest dates I have seen that are in the 1920's. Two others are unknown.



11 years of
Duplex use



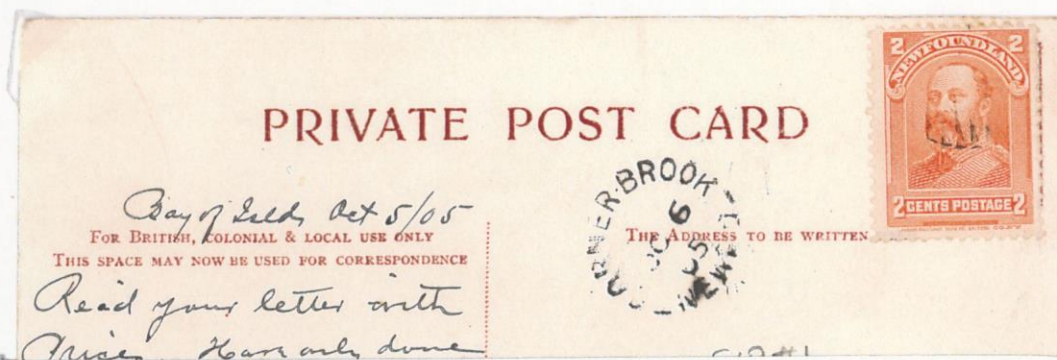
12 years of
Duplex use



12 years of
Duplex use



13 years of
Duplex use



As this is a pre-1900 split ring (dot between name parts) it is conceivable that this instrument and the Duplex were used concurrently.



Tizzards HR NDB 1911



THE LOOK-ALIKE LUSHES BIGHT THE NON-DUPLEX

This instrument meets the following criteria of the Duplex hammers. 1. Fully enclosed in circle. 2. NEWFOUNDLAND spelled in full with period. 3. Comma after place name. 4. Post office opened in 1900.



It does not fit all the criteria due to 1. It has NO oval obliterator. 2. The circle is too large. 3. A one line dater and 4. It is obviously a RUBBER datestamp.

Lushes Bight post office opened in 1900 with Samuel Parsons as first postmaster. Mails in Summer were weekly by S.S. Clyde from Lewisporte. During Winter the mail was by courier from the rail line at Badger and overland to Lushes Bight via Roberts Arm.