

# Admiral Study Group Meeting

---

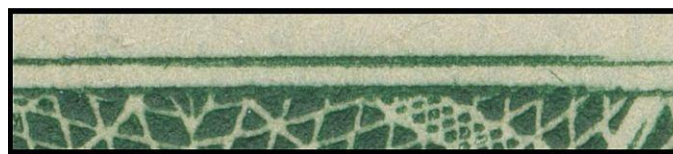
BNAPEX 2023 Halifax  
Friday, 15 September 2023

Andrew Chung, Chairman & Treasurer  
Leopold Beaudet, newsletter editor

(Revised 2023-11-09)

# Discoveries and curiosities

- 2¢ green with type B lathework
- Admiral constant plate varieties website
- Hand-engraved guide arrows
- Lathework doubled
- 2¢ carmine plate flaws
- 50¢ WAR TAX variety
- Miscut 1¢ green booklet pane
- 2¢ carmine booklet pane with OTTAWA TOP
- 2¢ WAR TAX on money order
- Coils with marginal markings

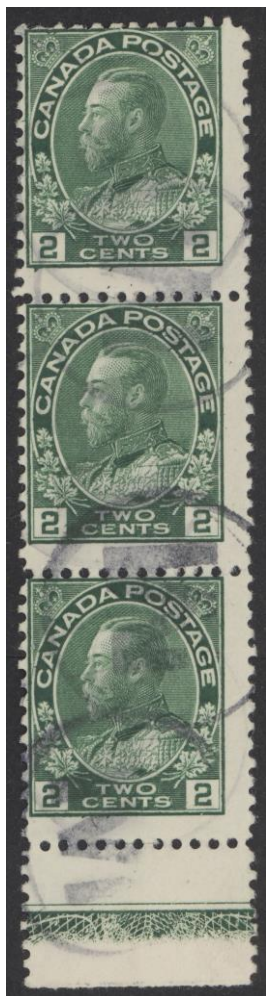


# Acknowledgements

---

- I would like to acknowledge the following for images in this presentation
  - David Bartlet
  - William G. Burden
  - Glen Lundeen
  - Robert Philmus
  - Simon Taylor-Young
  - Randall W. Van Someren
  - Library and Archives Canada
  - Canada Post Corp.
  - Yohann Tanguay, Eastern Auctions Ltd.
  - Nutmeg Stamp Sales
  - Philip Wolf, Select Stamps & Covers
  - Vance Auctions Ltd.

## 2¢ green with type B lathework



- Lathework on 2¢ green stamps (plates 159-229)
  - Type C: 159, 161-162
  - Type C inverted: 160
  - Type D: 169-172, 174-176, 179-181, 188-189
  - Type D inverted: 163-165, 167-168, 173, 177-178
  - Type D1 inverted: 166
  - No lathework: 182-187, 190-229
- No plate with type B lathework!
- What plate did this stamp come from?
  1. Error in Marler's lathework listing?
  2. 2¢ carmine plate with type B lathework?

Courtesy Philip Wolf,  
Select Stamps & Covers, Calgary

## 2¢ green with type B lathework



- Error in Marler's lathework listing?
  - No
  - None of the 2¢ green plates, 159-229, has type B lathework
- 2¢ carmine plate with type B lathework?
  - 44 plates with type B lathework
    - 113-144, 147-158
  - Was one used for the 2¢ green?
    - If so, which one?

## 2¢ green with type B lathework



Bottom stamp in strip  
Type R(2)2

- 2¢ green stamps are from retouched die, 2<sup>nd</sup> state
  - 2¢ carmine plates from retouched die, 2<sup>nd</sup> state, with type B lathework: 149-158 (10 plates)
- 2¢ green stamps are Marler design type R(2)2
  - 2¢ carmine type R(2)2 plates: 154-156 (3 plates)
- Is there a stamp on plates 154-156 with:
  - The same lathework pattern below it?
  - The same distance, 8 mm, from stamp design to lathework?



# 2¢ green with type B lathework

- Yes, there is!
  - As shown in the inset, the lathework below 154LL10/3 is a perfect match



Image of plate proof provided by Library and Archives Canada.  
CPA 106-168 (2¢ carmine, plate 154) lower left pane, bottom two rows.  
Courtesy Canada Post Corp. Used with permission.

Note doubled lathework  
below 154LL10/2

Admiral Study Group Meeting  
Copyright © 2023 Leopold Beaudet

## 2¢ green with type B lathework

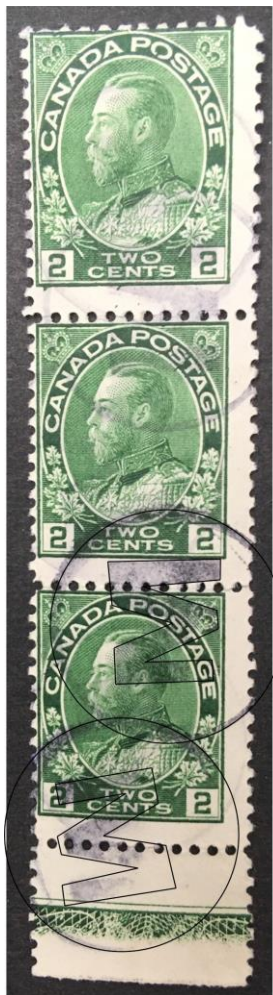
---



- But wait, there's more!
- Constant plate flaws on stamps AND plate proof
  - Two faint horizontal dashes
    - In the right margin about midway between two stamps in a vertical pair
      - Mentioned in Marler [p. 290]
    - In the right margin opposite the top of the cross in the crown. On all three stamps, but faint.
  - Both dashes appear on many stamps on plate 154



## 2¢ green with type B lathework



- Odd postmark
  - Three instances of a large M in a circle
    - In the image, the bottom two cancels are overlaid by sketches of the postmark
- Philip Wolf found this item in an otherwise non-descript collection
  - Owner obviously didn't realize its significance
  - Neither did previous owner who used the strip for postage
- VGG issued a certificate of genuineness
- My thanks to
  - Philip Wolf for letting me examine the item
  - James Bone, Archivist, Library and Archives Canada, for the image of the 2¢ carmine proof of plate 154

# 1¢ yellow with type B lathework

- Not recorded by Marler or Reiche
  - First recorded in 1999 and “rediscovered” in 2016 (John Smallman collection)
- 1¢ green plates with type B lathework
  - 141–166 (26 plates)
  - 1¢ yellow is from plate 150
  - 1¢ yellow imperf with type B lathework also from plate 150

## Why plate 150?

1¢ green plates: 1 to 170

1¢ yellow plates: 169 to 199 ... and 150

Courtesy Eastern Auctions Ltd., John Smallman collection,  
Sale 23 Feb. 2018, lot 73 (\$6,350 with 15% buyer's fee)



Admiral Study Group Meeting  
Copyright © 2023 Leopold Beaudet

# 5¢ violet with no lathework



Plates 1 – 14	Plates 15 – 22	Plates 23 – 25
Wet ptg No lathework	Wet ptg Lathe D, D inv	Dry ptg No lathe

- Marler and Reiche state:
  - Plates 1-14 used only for 5¢ blue
  - Plates 15-23 used only for 5¢ violet
- Plates 15-22 have lathework
- Plates 23-25 used for dry printing
  - No plate imprint at bottom
- 5¢ violet block must be from plates 9-14

# What do they have in common?

- All are scarce if not unique
- Not documented by Reiche or Marler
- All show a lathework variety
  - But no corroborating plate imprint pieces
- All three stamps issued in 1922
- All resulted from a colour change
- All are from plates retired well before the 1922 colour change
  - Produced to show the colour change prior to production?



# “Finding Images for Marler” – Bill Burden

- Website illustrates and describes
  - Re-entries
  - Retouches
  - Other plate flaws
- Over 3,000 detailed Admiral stamp images
- Descriptions from Marler’s 1982 book
- Many flaws not in Marler’s book
- Search function

*Finding Images for Marler*



◀ ▶

**2 Cent Carmine 25UR78**

“Doubling of the top and numerals of both boxes, in WO, of the outline of the portrait, and of many horizontal lines in the lower right, etc., with a line above and in the top and bottom of D, the nick in the upper right corner removed by retouching”

**Plate Position: 25UR78**

**Marler Type: O7**

Tags:

[Comment](#) [Help](#)

Image Provided by: WGB

Page added on December 11, 2020

<https://cms.wgburden.com/>

# Eastern Auctions sale of Lundeen Admirals

- Part 1, 18 Mar. 2023 – \$810,935
- Part 2, 19 Aug. 2023 – \$873,300
  - Lot 601 – \$145,000
    - Highest price ever for Admiral lot
    - Ex Frederick T. Norris, Clare M. Jephcott, Glen Lundeen
    - From a part-sheet of 200 Norris acquired by favour
- Part 3, Mar. 2024
- Prices do not include 18.5% buyer's fee



Courtesy Eastern Auctions Ltd., Glen Lundeen collection, Sale 19 Aug. 2023, lot 601

Admiral Study Group Meeting  
Copyright © 2023 Leopold Beaudet

# Hand-engraved guide arrows

- Jan. 1914 – Guide arrows hand-engraved on plates
  - Added when ABN eliminated gutters between panes
  - In the sheet margin between panes on all four sides
  - On some plates, arrowhead appears on stamp
- Mar. 1915 – Guide arrows engraved with transfer roll
  - Reverted to hand-engraving on a few plates



Arrow hand-engraved  
Arrowhead on stamp



Arrow hand-engraved  
Arrowhead in pane margin



Arrow engraved  
with transfer roll

More on guide arrows in  
Admiral Study Group  
presentation at  
BNAPEX 2017 Calgary

# Hand-engraved guide arrows

## Plates with guide arrows: hand-engraved and transfer roll

	Hand engraved		Transfer roll [1]		Subsequent hand-engraved
	Plate #	1 <sup>st</sup> plate [2]	Plate #	1 <sup>st</sup> plate [2]	
1¢ green	73-98 [3]	9 Jan. 1914	99-170 [4]	6 Mar. 1915	TBD
2¢ carmine	61-79 [5]	15 Jan. 1914	80-160 [6]	27 Mar. 1915	87, 139-140, 147
5¢ blue	5-8 [7]	19 Feb. 1914	9-14	9 Oct. 1915	None
50¢	2	4 Dec. 1917	3-4	29 May 1923	None

### Notes:

1. Transfer roll – On some plates (listed in the last column), the siderographer reverted to hand-engraving.
2. 1<sup>st</sup> plate – Date on which the first plate was engraved (from Marler).
3. 1¢ green – The guide arrows on the proofs of plates 73-80, 83, and 84 were drawn using a green pencil and engraved on the plate after the proof was made. It is assumed that the arrows were hand-engraved.
4. 1¢ green – For plates 99-170, it is not known whether the arrows on any of the plates were hand-engraved.
5. 2¢ carmine – The proof of plate 66 has no guide arrows. It is assumed they were hand-engraved on the plate after the proof was made.
6. 2¢ carmine – The proof of plate 158 has no guide arrows. It is not known how they were engraved on the plate.
7. 5¢ blue – The proofs of plates 5 and 6 have no guide arrows. They were hand-engraved on the plate after the proof was made.
8. Some 1¢ yellow and 3¢ brown plates, produced well after the introduction of transfer rolls, also have hand-engraved guide arrows.



# Hand-engraved guide arrows – 2¢ carmine



Top guide arrow  
0.4 mm  
64UR1/1



Left guide arrow  
1.3 mm  
63UL10/1



Right guide arrow  
0.3 mm  
63UR10/10



Bottom guide arrow  
1.0 mm  
64LR10/1

- **Keys to plating**

- Distance from tip of arrowhead to stamp frame
- Distinctive feature in guide arrow
- Other features (guide dot, plate flaw, etc.)

# Hand-engraved guide arrows – 2¢ carmine

Plates 61 to 79 – Distance from tip of arrowhead to stamp frame

Plate	Type	Top arrow		Bottom arrow		Left arrow		Right arrow	
		UL1/10	UR1/1	LL10/10	LR10/1	UL10/1	LL1/1	UR10/10	LR1/10
61	R9	1.0	1.4	1.5	1.4	1.5	1.3	1.5	1.5
62	R9	0.7	1.1		1.1	0.7	0.7	0.8	0.8
63	R9	1.1	1.2			1.3	1.3	0.3	0.7
64	R9	0.4	0.4	1.2	1.0	1.0	0.8		1.2
65	R10	1.5				0.8	0.7		1.2
66	R10								
67	R10					4.0	3.7		5.0
68	R10					4.6	4.4		3.7
69	R11					1.8	1.8		2.6
70	R12					3.0	2.6		1.5
71	R12	2.2				2.0	2.0		2.1
72	R12					2.2	2.1		1.8
73	R13					3.1	3.0		3.4
74	R13/14					3.5	3.3		5.0
75	R15					5.0	5.0		5.4
76	R15a					3.0	2.9		3.0
77	R15b					4.6	4.4		4.5
78	R16					5.5	5.3		8.4
79	R16					2.7	2.5		1.8

Notes for this table on next slide



# Hand-engraved guide arrows – 2¢ carmine

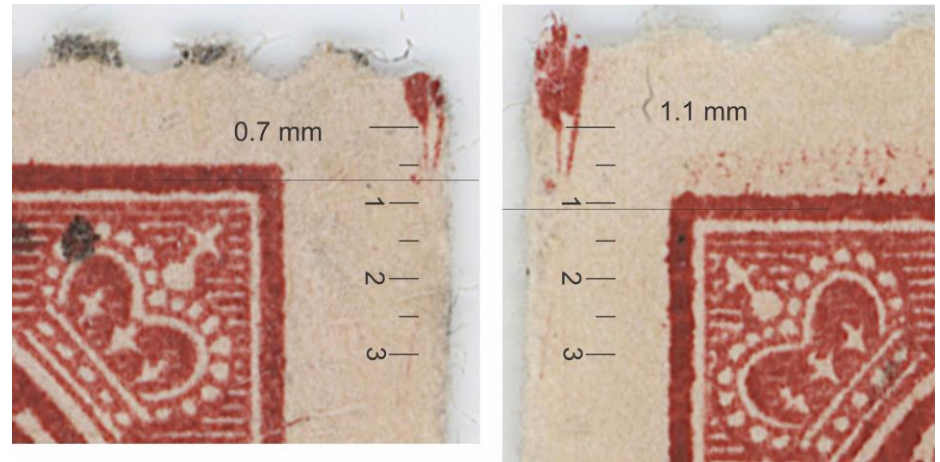
---

Notes for the table on the previous slide:

1. The measurements were taken from the plate proofs at Library and Archives Canada and actual stamps. Where actual stamps were used, they were plated using the plate proofs.
2. Column labelled “Type” = Marler design type.
3. Yellow cells = No guide arrow on plate (plate 66) or plate probably not used (plate 77).
4. Blue cells = Issued stamp examined, courtesy William G. Burden.
5. If the arrowhead is more than 2.5 mm from the design, it will likely not appear on the stamp.
6. Measurements are given to the stamps on both sides of each guide arrow because the distance is often different. The reason is that the adjacent stamp designs may be shifted relative to one another. The difference, where there is one, is small but observable, typically no more than 0.1 to 0.3 mm.
7. Blank cells = measurement not yet made (this is a work in progress).

# Hand-engraved guide arrows – 2¢ carmine

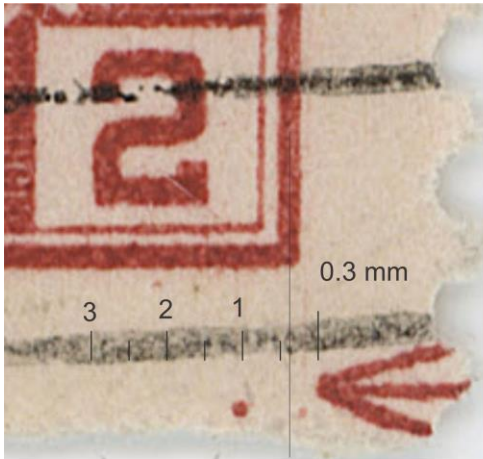
62UL1/10 & 62UR1/1



Stamp images courtesy William G. Burden

- Plate 62, top guide arrow
  - “Bird’s beak” created by vertical guideline and possible engraver’s slip extending below the arrowhead.
  - Right stamp shifted down 0.4 mm relative to left stamp

# Hand-engraved guide arrows – 2¢ carmine



63UR10/10 & 63LR1/10

- Plate 63, right guide arrow
  - Top flared line meets the shaft to the left of the bottom flared line
  - Large guide dot to the left and just below the arrowhead
  - Small, faint guide dot very close to arrowhead (to the left and just below it)
  - Guide dot in right margin at midpoint (not on images)
  - Faint vertical guideline goes through both guide dots (barely visible in images)
  - Bottom stamp is shifted 0.4 mm to the left of the top one

Stamp images courtesy  
William G. Burden

# Hand-engraved guide arrows – 5¢ blue



Plated using guide dots and guidelines because guide arrows were not on plate proofs

Left stamp in plate 5 box courtesy Randall W. Van Someren

# Hand-engraved guide arrows – 5¢ blue IRWT



# Hand-engraved guide arrows – 50¢



- Likely plate 2 (to be confirmed)
  - Plate of 200 (two panes)
  - No gutter between panes
  - Engraved 4 Dec. 1917
- Only examples seen

Courtesy William G. Burden



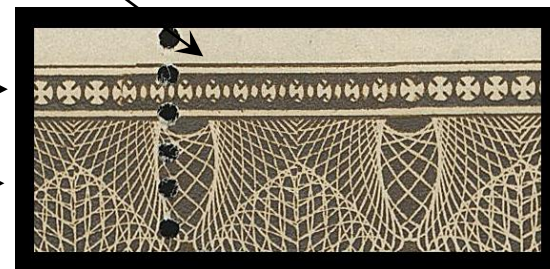
# Lathework doubled – type A



Plate 41, lower left pane

- Two bands of lathework
- Bands laid down separately
  - Horizontal lines laid down with Maltese crosses?

Maltese cross band →  
Engine turning band →



Ten crosses doubled  
Horizontal lines thicker  
Engine turning normal

Courtesy Eastern Auctions Ltd., Glen Lundeen collection, Sale 19 Aug. 2023, lot 632, \$1,350

More on doubled lathework in Admiral Study Group presentation at BNAPEX 2018 Quebec, QC

Admiral Study Group Meeting  
Copyright © 2023 Leopold Beaudet

# Lathework doubled - type B

- Engine turning and horizontal lines doubled
  - Laid down together?



156LR10/7



153LL10/2

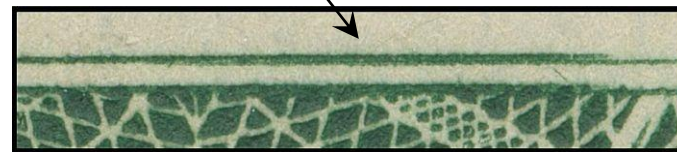


10LR10/3

3¢ brown courtesy Eastern Auctions Ltd., Glen Lundeen collection, Sale 19 Aug. 2023, lot 560, \$1,200

# Lathework doubled – type C

- Elements doubled
  - Top horizontal line
  - Top border line
  - Bottom two lines (seen on plate proof)
- Plates 167-170 have type C lathework
  - Doubled lines below
    - 167LL10/7, 167LR10/4
    - 168LL10/5, 168LR10/7
    - 169LL10/6, 169LR10/3
    - 170LL10/6, 170LR10/3
- Engine turning not doubled
  - Laid down separately?
- Discovered by Yohann Tanguay while lotting the Lundeen collection



168LL10/5

Courtesy Eastern Auctions Ltd., Glen Lundeen collection, Sale 19 Aug. 2023, lot 521, \$1,300

# 1¢ green booklet pane discovery

Courtesy  
Simon Taylor-Young



Ex Alfred P. Cook, Donald Ure

- Miscut booklet pane stamp from Simon Taylor-Young
  - Found in a lot
  - Reveals the tête-bêche arrangement of the panes
- Perhaps from the same sheet as this miscut pane
  - Likely from plate 17-18
  - Guide dots (arrows) imply that the pane is an inverted pane and tête-bêche portion is an upright pane

## 2¢ carmine “Accent over C”

- Constant plate flaw
  - 2UR10/7
  - Multiple mint and used examples known
  - Not on plate proof
- Unusual flaw
  - White rather than coloured
- Documented by Reiche



Courtesy William G. Burden

# 2¢ carmine serendipity defective transfer find

- Accidental find on plate proofs at Library and Archives Canada
  - Didn't look "real", almost passed over it
- Stumbled across used example
  - Just browsing through computer images



83UR60

## 2¢ carmine booklet pane discovery

- 2¢ carmine booklet pane with Ottawa TOP from David Bartlet
  - Found in a lot in U.S. dealer stock at the Great American Stamp Show (GASS), Cleveland, Ohio, 10-13 August
  - Plate 15, top left pane of the sheet



Courtesy David Bartlet

## 2¢ carmine booklet panes, Lundeen collection

- 2¢ carmine booklet pane with Ottawa TOP
  - Plate 15, ex Alfred P. Cook, “Lindemann” (Ian Bett) (lot 615)
  - Plate 16, ex Robert Bayes (lot 616) – scarcer pane



Courtesy Eastern Auctions Ltd.  
Sale 19 Aug. 2023, lot 615, \$5,000

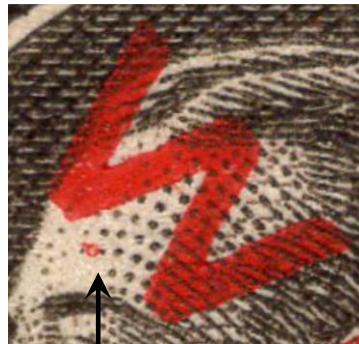
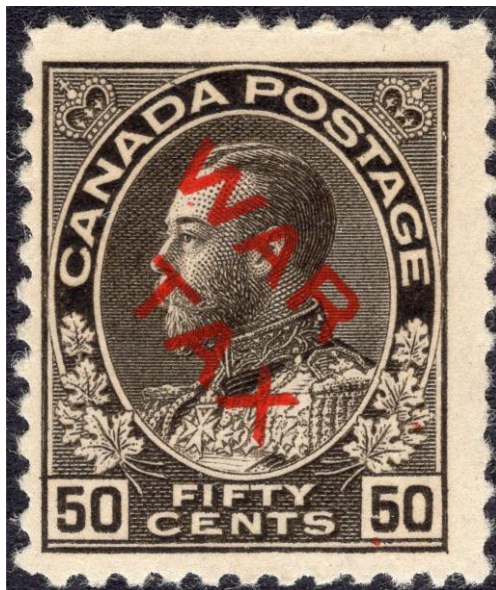


Courtesy Eastern Auctions Ltd.  
Sale 19 Aug. 2023, lot 616, \$5,500



# 50¢ War Tax with red dots

- Four red dots on 50¢ War Tax
  - Are they constant?
- Discovered by Simon Taylor-Young



①



②



③

④

Courtesy Simon Taylor-Young

# 2¢ War Tax on money orders

**E CANADIAN MONEY ORDER**  
MANDAT DE POSTE CANADIEN

**ATWOOD, Ont.**

Stamp of Issuing Office  
Timbre du bureau expéditeur.

English Money.  
£      s      d

Amount—(Montant)  
\$      cts.

N<sup>o</sup> 9144

**ATWOOD ONT AP 13 18**

**2 CENTS**

**Dollars**  
**Cents**

PAY to the person mentioned in advice— [PAYEZ à la personne mentionnée dans l'avis]

To the Post Office at  
Au Bureau de Poste à

Stamp of Paying Office  
Timbre du bureau payeur.

Postmaster—[Maitre de Poste.]

Received the above sum— [Reçu le montant ci-dessus]

Signature.....

This Money Order is subject as regards payment and transfer by endorsement, to the existing Postal laws and regulations which govern the transfer and payment of Money Orders in the Country upon which it is drawn.

Ce mandat est sujet, tant au paiement qu'au transfert par endossement, aux lois et règlements postaux régissant le transfert et le paiement de mandats-poste dans le pays sur lequel il est tiré.

- 2¢ War Tax on money orders
  - Bill 76, “The Special War Revenue Act, 1915” levied a 2¢ tax for Post Office money orders
  - Stamps for collecting tax were to have the words “War Tax”
- Postmarked ATWOOD ONT AP 13 /18
- “Perfect” example of 2 ¢ War Tax use

# Coils with marginal markings – 1¢ endwise

- Perf 8
  - Tab at bottom
  - Trimmed at top
- Perf 12
  - Tab at top
  - Trimmed at bottom



Perf 8  
Tab at bottom



Perf 12  
Tab at top



Perf 12  
Paste-up

# Coils with marginal markings – 1¢ endwise

- Perf 8
  - Printed from
    - Coil plate 1
  - No markings in tab at bottom
- Perf 12
  - Printed from
    - Coil plates 1 and 2
    - Several sheet plates
  - Markings in tab at top



Plate 2  
UR pane  
Column 2



Plate 2  
UL pane  
Column 3



Plate 2  
UL pane  
Column 9

UL pane – imprint 8 mm above stamp  
– “903” 6.5 mm above stamp  
UR pane – imprint 6.5 mm above stamp  
– “903” 5.5 mm above stamp

Both pairs courtesy Glen Lundeen

# Coils with marginal markings – 1¢ endwise

- How could this occur?
  - Stamp below paste-up is torn from tab
  - Stamp with tab is used for postage
  - Collector soaks stamp
  - Tab is unglued from stamp
  - Collector hinges tab to stamp above the plate imprint
- Is it genuine?
  - Stamp is Marler design type ERR3
    - Coil plate 2 stamps: ERR2 & ERR3
  - Imprint is correct for coil plate 2
  - Tab is same width as stamp
  - Cancel at bottom of tab fits cancel on stamp

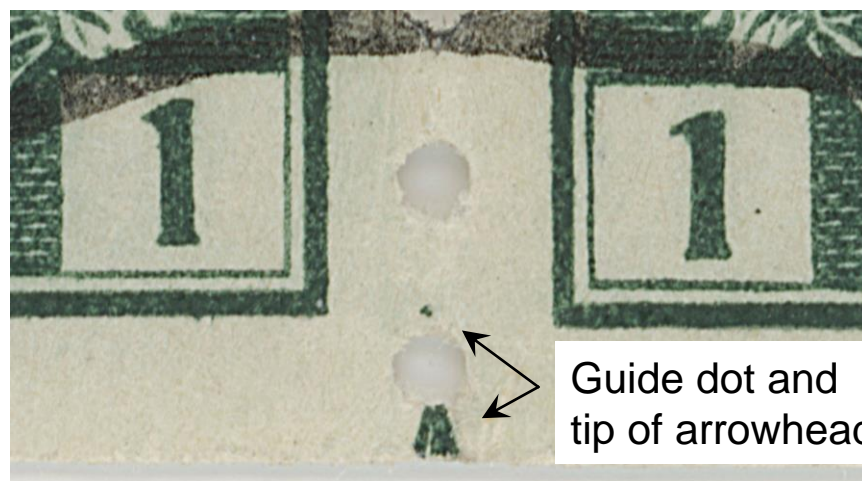
Continuation  
of cancel →



Part of a large lot of Admiral coils acquired by Robert Philmus at auction 25+ years ago. See also 3¢ carmine sidewise coil.

# Coils with marginal markings – 1¢ sidewise

- Hand-engraved vertical guide arrow in bottom margin
  - Coil plate 5
    - Engraved 13 Aug. 1914
    - Top and bottom guide arrows
    - Between columns 10 and 11
- Only sidewise coil plate with vertical guide arrows
  - Probably served no purpose
- Almost certainly unique, especially in a pair like this



# Coils with marginal markings – 2¢ endwise

- **Perf 8**

- Printed from
  - Coil plate 1
- Tab at bottom
- No markings in tab

- **Perf 12**

- Printed from
  - Coil plates 1 and 2
  - One sheet plate, type R(2)2
- Tab at top
- Markings in tab



Perf 8  
Bottom tab



Perf 12  
Top tab



Plate 1



Plate 2

# Coils with marginal markings – 2¢ endwise

- Part of guide arrow in top margin at right
- Reported by Hans Reiche in *Canadian Philatelist*, Sept.-Oct. 1997
  - Reiche erroneously identified coil as retouched die, 2<sup>nd</sup> state
    - Type ERR(2)2 (plates 154-156)
- Guide arrow is hand-engraved
  - From plate 139 (retouched die, 1<sup>st</sup> state), type R31
- Plate 139 not used for coils
- Tab taller than normal for a coil
- Signs of vertical perf holes at lower left of bottom stamp!
- **Fake**, produced from sheet stamps

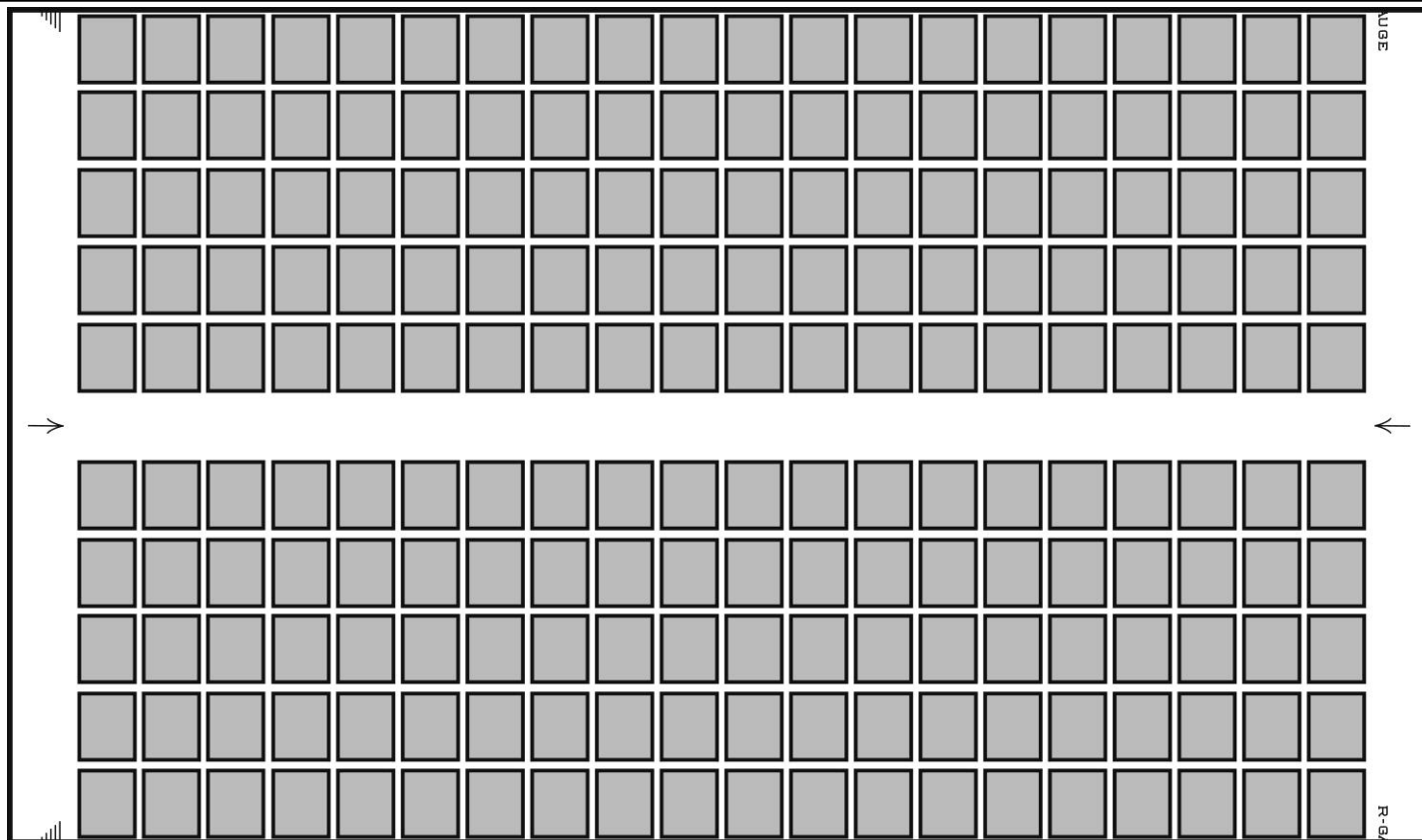
Ex Reiche, Brigham



Slight indentation where perf holes should be



# Coils with marginal markings – 3¢ sidewise



Sketch of Norris part-sheet of 200 of 3¢ carmine sidewise coil (plate 11 or 12). Pyramid guides in left margin and R-GAUGE in right margin.

# Coils with marginal markings – 3¢ sidewise



Norris part-sheet was split into 5 gutter blocks of 12 (2 of them in the illustration), 5 gutter blocks of 4, plus other pieces.  
Pieces from left and right margins show pyramid guides and R-GAUGE.

Sources on next slide

# Coils with marginal markings – 3¢ sidewise

---

- Sources of stamps shown on previous slide
  - UL pair with pyramid guide – Stan Lum collection
  - Gutter block of 12 from left margin – Stan Lum collection
  - UR block of 4 with R-GAUGE – Eastern Auctions Ltd., “Michael Roberts” collection, Sale 1-2 Dec. 2006, lot 1000
  - Gutter block of 12 from right margin – Eastern Auctions Ltd., Glen Lundeen collection, Sale 19 Aug. 2023, ex lot 601
  - LR block of 4 with R-GAUGE – Nutmeg Stamp Sales, Sale 177, 13 Nov. 2008, lot 6663.

# Coils with marginal markings – 3¢ sidewise



1. Sidewise coil with tab hinged to stamp



2. Sheet stamp (has guide arrow)



3. Part-perf coil, UR “pane”



4. Part-perf coil, LR “pane”

Mint example in strip of 6 also reported. Stan Lum collection.

- Sidewise coil with part of R-GAUGE on tab hinged to the coil
  - Tab must come from a coil plate (11 or 12) because sheet plates have a guide arrow above the R-GAUGE (item 2)
  - Tab probably from UR “pane” (item 3), based on position of R-GAUGE relative to stamp
  - Tab and stamp probably from different coil strips, based on top and bottom of tab

Sources on next slide

# Coils with marginal markings – 3¢ sidewise

---

- Marler writes [p. 527]
  - “Both of these additions [pyramid guides and R-GAUGE imprint] to the plates were trimmed off the printed sheets when they were cut to make up the rolls”
    - The pyramid lines were trimmed off
    - The R-GAUGE imprint was **partly** trimmed off
- Sources for items on previous slide
  - Item 1: Robert Philmus (see also 1¢ green endwise coil)
  - Item 2: Glen Lundeen collection
  - Item 3: Eastern Auctions Ltd., “Bessemer” collection, Sale 25-26 Oct. 2013, lot 1818 (ex Fred Jarrett)
  - Item 4: Glen Lundeen collection



# Revisions

---

1. 2023-10-16 Slide 24: added 50¢ stamp with guide arrow in top left margin.
2. 2023-11-09 Slides 3, 37, 45: corrected typo.