

Squared Circle Postmarks of Canada on the 1898 Canadian 2¢ Imperial Penny Postage Issue (The ‘Map Stamp’): A Census of Off-Cover Cancellations

by Rick Friesen, PhD



Copyright © Rick Friesen 2020

This census will be updated periodically as new data becomes available. Please quote the following when referring to it:

Rick Friesen, *Census of Squared Circle Cancellations on Map Stamps Off-Cover*

Table of Contents

1. General Introduction	3
2. What is Reported.	3
3. The Census of Squared Circle Cancellations on Off-Cover Map Stamps .	7
3.1 How to Read the Database	7
3.2 Hammers with ≤ 10 Strikes.	8
3.3 Hammer with >10 Strikes - Stamps/Strikes of Special Interest	29
4. Basic Statistics of the Off-Cover Map Stamp Census	31
5. References and Endnotes	32
6. Appendices	33
6.1 Population Report of Off-Cover Squared Circle Cancellations	33
6.2 Abbreviations for References.	38
6.2 Possible Hammers on the Map Stamp	40
7. Images.	42

1. General Introduction

This publication provides a census of Squared Circle cancellations on off-cover examples of the Canadian 1898 2¢ Imperial Penny Postage Issue, the 'Map stamp'.¹ The last population study of Squared Circle postmarks took place from 1996 to 2000 and was reported in the 2001 5th edition of the BNAPS Squared Circle Handbook, *The Squared Circle Cancellations of Canada* (hereafter referred to as 'Handbook #5'), edited by Jack Gordon.² It reports the existence of 5114 Squared Circle off-cover Map stamp strikes, representing 0.03% of the 19,927,500 Map stamps that were delivered to the Post Office by the American Bank Note Company in 1898 and 1899. However, a comprehensive detailed listing of the Squared Circle strikes on Map stamps was not published, nor is it currently available if it ever existed at all. This compendium strives to fill that gap in the philatelic literature.

Rather than simply being a list of population numbers, this census (hereafter referred to as the 'Census') is a detailed compendium that has been compiled from numerous sources, including over 58 years of public auction listings,³ internet auctions (such as eBay), philatelic literature (including books and journals), exhibits, dealer stocks, personal communications from fellow Squared Circle collectors, and my own personal collection. It is probable that many Squared Circle canceled Map stamps that are not captured in the Census currently reside in unreported Squared Circle collections or untapped specialty collections (for example RPO, regional or general Map stamp collections) and it is my hope that this publication will encourage those who have such material to advise me of their holdings so that updates to the database can be made. You can contact the author for submissions/corrections by email at: rickfriesen5@gmail.com.

2. What is Reported

This Census of Squared Circle Map stamp strikes currently documents 3461 off-cover examples, approximately 68% of the number reported in Handbook #5. Nevertheless, I thought that it was prudent to publish the Census, despite this low percentage, since the listings for the rarer hammers are quite comprehensive. In contrast, the discrepancy between the Census and Handbook #5 populations is greatest for those hammers with very large strike numbers, such as Halifax, Victoria, York Street, and Brandon, and this discrepancy makes up the bulk of the unreported strikes. Needless to say, the Census is far from complete and the true number of off-cover strikes may never be known!

It didn't really make sense to publish a detailed listing of all 3461 off-cover strikes in this report - how interesting or informative would it be to view a list of hundreds of Halifax strikes! Instead, in attempting to determine how to limit the size of the published off-cover Map stamp database, I considered what I valued most as a collector. Clearly, information and data on the strikes from the hammers with few examples is the most desirable. One reason for this is clear. 'Rare' strikes on 'special' stamps, such as the Map stamp, continue to command premiums, irrespective of their RF value⁴, when offered for sale at auction. For example, a Kingston off-cover Map stamp strike dated 4/DE 7/98 sold for \$818 CDN in a 2017 All Nations Stamp and Coin Auction (Feb 11, 2017, Lot #33), while a Farnham off-cover Map stamp strike (a perceived unique strike at the time) sold for \$551 CDN in a February 2018 eBay auction. Although the most recent Handbook #5 population report of Map stamp strikes is reasonably useful for hammers with large numbers of examples, it is currently not as useful for 'rare' town strikes since the data is almost 20 years out of date. For example, while there was a single Lunenburg, NS off-cover Map stamp strike reported in the 2001 Handbook #5, there are currently 13 documented off-cover examples.

Therefore, the detailed list of Squared Circle cancelled off-cover Map stamps found in **Section 3.2** is comprised of strikes from hammers in the Census that currently have 10 or fewer documented strikes.

94 Squared Circle hammers meet the ≤ 10 strike criteria (i.e. almost 50% of the 203 hammers⁵ documented on off-cover Map stamps). The listings include the strike date and, where possible, a description of the cancellation/stamp (such as the letters of the town name that are visible on the stamp, the ocean colour (subjective of course!), etc). Omitted from the detailed list are hammers having >10 Census strikes (note that there are 3 hammers (Northport, Sackville, Sutton West) for which Handbook #5 reports >10 strikes, but the Census records ≤ 10 strikes - these hammers are considered to have >10 strikes). For hammers with >10 Census strikes, stamps of special interest (such as indicia errors, matched date TM, rare TM, coloured ink strikes, etc.) are listed in a separate table in **Section 3.3**. The table in **Appendix 6.1** is a population report for the 203 Squared Circle hammers with documented off-cover Map stamp strikes, comparing the Handbook #5 and Census data.

Numerous auction catalogues, as well as a number of journal and book references, list Squared Circle cancelled Map stamps with no strike date, detailed description or photo/image. Such references are especially common in auction lots that list multiple stamps/covers and provide only the town name of the Squared Circle cancellation. For completeness, such stamps are reported in the list in **Section 3.2**

with a date of '???' and are highlighted in grey. These stamps are not included in the population report since it is possible that they may actually refer to one of the stamps detailed in the Census.

Finally, the identification of the town and/or indicia on the Squared Circle cancellation is sometimes subject to individual interpretation and, in the absence of a photograph, scan or illustration, I have had to rely on the reports of fellow collectors, or those who have written auction listings, for accuracy. Fortunately, many collectors have generously provided me with scans of their holdings, and Aaron Gulliver, Bill Wegman, and Scott Wiggins have allowed me to use the images of some of their stamps in this document. Similarly, many auction houses (including Sparks, Vance, Bow City, and Eastern) have generously sent me scans of stamps when they haven't been included in the primary auction catalogue listings. The availability of images of the stamps/strikes is especially useful when identifying and verifying the rare strikes, and it helps to avoid duplicate reporting. However, only ~72% of the 362 stamps listed in **Section 3.2** are accompanied by an image. Therefore, while every effort has been made to verify the claims of towns, dates and indicia, it is possible that errors inadvertently appear in the database lists.

As an example of the problems that can arise when an image of a rare strike does not accompany the report, let's look at the Windsor/ONT hammer. While no Map stamp strikes were recorded in the 2001 Handbook #5, Jack Gordon reported the first Windsor/ONT Map stamp strike, dated PM/MR 13/99, in the *Roundup Annex* in 2005.⁶ As reported in the *Annex*, this information on the late use of the Windsor hammer on a Map stamp came from "a CD-ROM of images from the Hennok collection" supplied by Bill Longley to Jack Gordon. However, no image of the strike accompanied this report in the *Annex*. I used the *Annex* information to update the database and as source material when writing my 2019 article for the *Roundup Annex* entitled "Unique Squared Circle Cancellations of Canada on the 2¢ Imperial Penny Postage Commemorative Issue of 1898 (The 'Map Stamp')".⁷ Surprisingly, this unique Windsor/ONT stamp/strike was not illustrated or sold individually in the December 2005 Matthew Bennett auction of the Jim Hennok collection. By comparison, the unique Kincardine/ONT Map stamp strike in the Hennok collection was illustrated and offered as an individual lot, Lot #2107. So where did the information reported in the *Annex* regarding the Windsor/ONT strike originate? It turns out that Hennok exhibited his collection of the Squared Circles of Canada in the late 1990's or early 2000's and a book illustrating his exhibit was prepared. I recently acquired a copy of this book from Bill Longley and presumably it was this book that was used to prepare the CD-ROM of images referred to above. In his exhibit, Hennok displays a Map stamp on the page dedicated to strikes from Windsor/ONT (see **Figure 1**) with

the accompanying caption “Latest Date” (note that when he was preparing his exhibit, Hennok would have been working with either Handbook #4 or #5, both of which report PM/DE 5/98 as the Windsor/ONT hammer latest date of use). A closer perusal of the strike (see **Figure 1**) reveals that it was incorrectly assigned as a Windor/ONT strike by Hennok and reported as such by Gordon - it is actually a PM/MR 13/99 LINDSAY/ONT strike! Suffice it to say that the Census does not record a Windsor/ONT strike. It is my hope that any other errors found in this Census will be reported and corrected over time. Please forward corrections to the author at rickfriesen5@gmail.com.

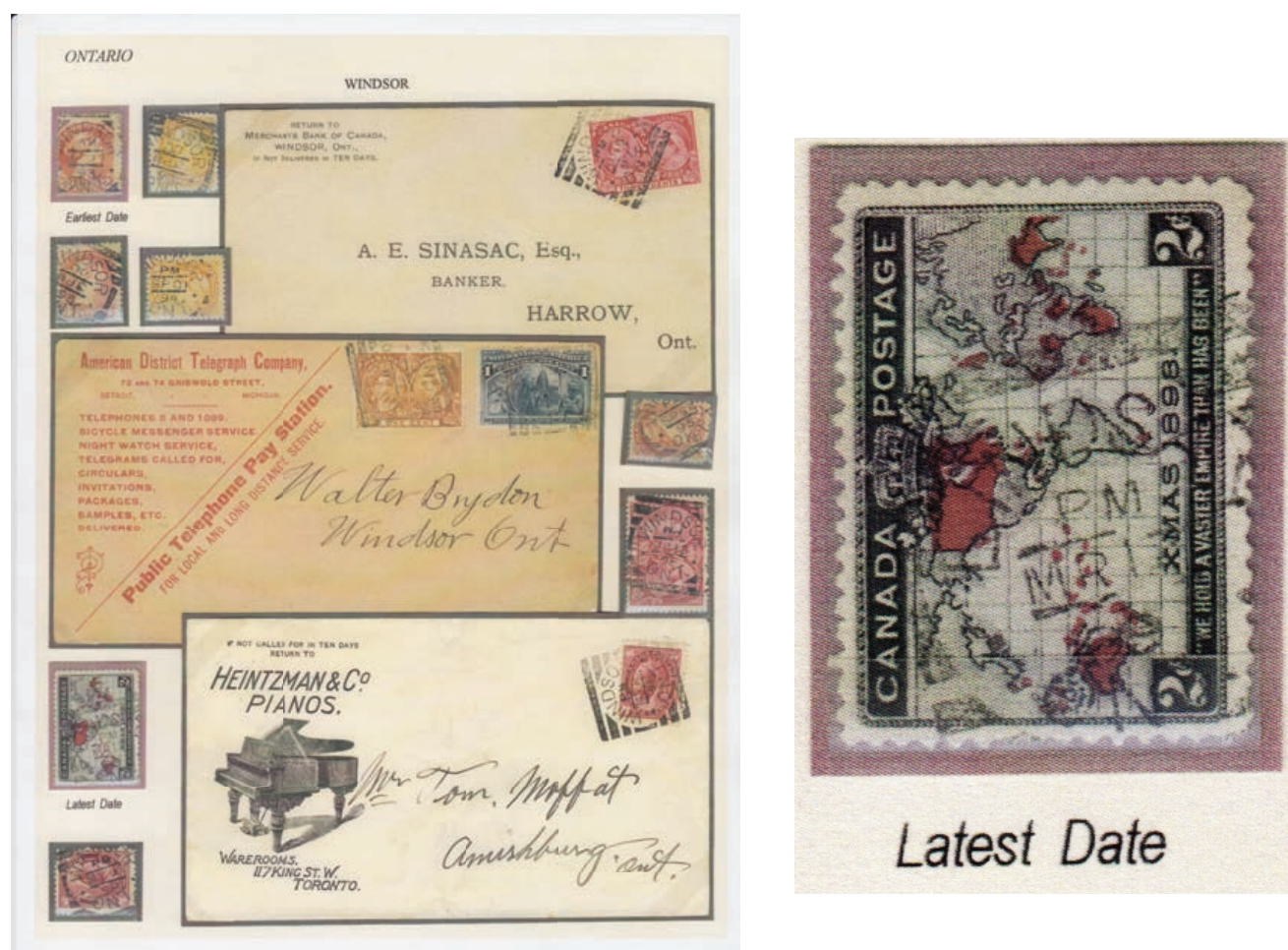


Figure 1. The WINDSOR/ONT page from the Hennok exhibit containing the Map stamp strike incorrectly reported to be the “Latest Date” (PM/MR 13/99)

3. The Census of Squared Circle Cancellations on Off-Cover Map Stamps

3.1 How to Read the Database

The Census is organized according to hammer Type, with the Type 2 hammers ordered by province/RPO as in the handbook. The table is comprised of several columns:

1. **Strike Date:** standard listing of indicia, typically TM/MM DD/YY. The notation ‘???’ represents an unreported or unreadable date (see above). A ‘?’ in an indicia listing is an unreadable entry (for example, -/?? 25/99 is the 25th day of an unknown month in 1899; -/FE 2?/99 is the 2?th of February in 1899; -/FE (3?)/99 is possibly the 3rd day (could be another day) of February 1899). A ‘-’ notation means that the letter/number is off-stamp unless it refers to the time mark in which case it is the normal ‘not used’ notation. Entries in **Section 3.2** that have interesting indicia (such as errors, rare TM, coloured ink etc) are highlighted in blue. Note that strikes that are not included in the population report are highlighted in grey.
2. **Image:** refers to the availability of an image of the stamp (scan or photo): Y = yes; N = no. If necessary, the number(s) following the ‘Y’ refer to the reference(s) from which the image was obtained (e.g. Y2,4 = images are available from references #2 and #4). Entries for which an image can be found in **Section 7** are highlighted in green.
3. **Description & Comments:** where warranted, the full auction catalogue description of the stamp is provided. In the absence of such a description, every effort has been made to provide a description of the cancellation/stamp (such as the letters of the town name that are visible on the stamp, the ocean colour (subjective of course!), etc).
4. **Reference:** source of the database entry, such as auction, literature and exhibition references. PC = personal communication from the current owner. A table listing the other abbreviations used in this column can be found in **Appendix 6.2**.

3.2 Hammers with ≤10 Strikes

Hammer	Strike Date	Image	Description & Comments	Reference
Type 1				
Aldergrove, BC	???	N		ANP-539
	-/JA 11/-9	Y	shows '...LDERGROVE' on lavender oceans Map stamp	EB
	-/F- -/-	Y	shows 'ALDERG...' on grey oceans Map stamp	PC
Cumberland, ONT	???	N	2 stamps	AWB-233
	-/- 13/-9	Y2	<ul style="list-style-type: none"> AJS: "Partial strike on 2¢ blue. Stamp somewhat faulty. Extremely scarce, only 5 known (none on cover)" shows '...RLAND/.T' on pale blue oceans Map stamp 	1. AJS-493 2. PC
	-/FE 2/99	Y1,2	<ul style="list-style-type: none"> AHD: "65% strike on 2¢ MAP STAMP, 'ONT' is off stamp. RF 35." showing 'CUMBERLAND/...' 	1. AHD-1128 2. PC
	-/MR 17/99	Y1,3	<ul style="list-style-type: none"> AMR: "a light, but readable strike" shows 'CUMBERLAND/ONT' 	1. NP 2. ANP-539 3. AMR-1239
	-/MY 8/99	N	inverted 8	RW-28
	-/AU 1/99	Y	<ul style="list-style-type: none"> AJAH: "rare (H-5)" ARW: "70% strike on #85, shows 'CUMBERL.... ONT' RF 35, 5 recorded map stamp strikes" 	1. AJAHDE83-603 2. ARW-450
	-/DE 31/9?	Y	SON strike shows 'CUMBERLAND/ONT.' on bluish-green oceans Map stamp	PC
London, ONT, State 2	3/DE 9/98	Y	<ul style="list-style-type: none"> first Map report SON strike showing 'LONDON/ONT' on lavender oceans Map stamp 	1. PC 2. RA136
Mansonville QUE			See Note (1)	
New Germany, ONT	-/JA 16/99	Y1	shows '...ANY/ONT' on pale blue oceans Map stamp	1. EB 2. PC
	-/MR 30/99	Y1,5	<ul style="list-style-type: none"> ANP: "partial strike, dated '99, 3 strikes known on Map (no covers), corner crs." AMR: "a partial strike but readable, 3 known on the Map stamp" ANB1: "40% strike on 2c MAP STAMP, show '...MANY/.NT', ONLY 3 RECORDED ON MAPS. RF 60" 	1. NP 2. ANP-544 3. AMR-1244 4. ANB1-1266 5. PC
	-/OC ??/99	N	<ul style="list-style-type: none"> AJAH: "scarce on Map Ex Whitehead (H-3)" ARW: "very partial 20% strike on #85. Shows 'NEW G...., ON.' RF 60, only 3 recorded map stamp strikes" possibly one of the two strikes below? 	1. AJAHDE83-608 2. ARW-455
	-/OC ??/99	N	<ul style="list-style-type: none"> AWB: "2 copies both Oct '99 and both from the same plate position (pl 3 position 90), Fine" not the same stamp as below, but both from plate position 3-A-90 	AWB-236
	-/OC ??/99	N	<ul style="list-style-type: none"> AWB: "2 copies both Oct '99 and both from the same plate position (pl 3 position 90), Fine" not the same stamp as above, but both from plate position 3-A-90 	AWB-236
	-/OC 17/99	Y	<ul style="list-style-type: none"> shows '...GERMANY/...NT' on greyish brown oceans Map stamp latest reported date of use in Period 2 	PC
Point St. Charles, QUE	-/FE 2(7?)/99	Y2	shows 'POINT ST. CH.../QUE' on lavender oceans Map stamp	1. CPS2015-285 2. PC
Shannonville, ONT	-/JA 3/99	Y1,3	shows 'SHANNONVILLE/...' on light blue oceans Map stamp	1. NP 2. ANP-539 3. PC
	-/JA 17/99	Y	shows 'SHANNONV.../O...'	AJAHDE83-611
	-/JA 13/99	Y	shows '...AN...VILLE/ONT' on light blue oceans Map stamp	PC
	-/FE 2/99	N		PC
	-/MR 2/99	N		PC
	-/MR 3/99	Y	<ul style="list-style-type: none"> different than stamp below almost SON strike shows 'SHANNONVI.../ONT' on grey oceans Map stamp 	PC

Hammer	Strike Date	Image	Description & Comments	Reference
	-/MR 3/99	N	different than stamp above	PC
	-/MR 3/99	N	same as one of 2 stamps above?	ABM-943
	-/MR 6/99	Y4,5	<ul style="list-style-type: none"> shows '...HANNONVILL.../...' on grey-brown oceans Map stamp auctions of the Winmill (ref 1), Bradley (ref 2) and Boisclair (ref 3) collections incorrectly list this stamp as a Mansonville strike (see RA) ARW: "40% light strike on #85. Shows 'ANSONVIL...'. RF 40 only 2 recorded map stamp strikes." AWB: "light strike Mr 6/99, the latest date noted! Fine" ARB: "Well centered example (Plate 3 Position 46) showing light but clear large portion of Type I squared circle (-/MR 6/99) cancel - only two strikes reported on Map stamp, no cover known.....ex. Bradley" 	1. ARW-454 2. AWB-235 3. ARB-434 4. RA122-4 5. PC
	-/AP 20/99	N		ARL74-1586
Westville, NS	???	N	2 stamps	AWB-233
	-/?? ??/99	Y	<ul style="list-style-type: none"> 2 overlapping strikes with an indecipherable date show 'WES.../N...' on a grey oceans Map stamp possibly the SP 22 or NO 25 strike below? 	EB-2019
	???	N	<ul style="list-style-type: none"> AJT reads "No.85 clear strike of upper half of "Westville" Type I squared circle cancel on piece." No other listing on piece 	AJT9/10-40
	-/JA 3/99	Y	SON strike shows 'WESTVILLE/N.S.' on a pale blue oceans Map stamp	PC
	-/JA 5/--	Y	shows 'WESTVILLE/...' on pale blue oceans Map stamp	PC
	-/JA 7/99	Y	shows 'WESTVILLE/N...' on pale blue oceans Map stamp	SQ
	-/AP 5/99	N		PC
	-/MY 4/99	Y2	<ul style="list-style-type: none"> AHD reads "lt. 75% strike on 2c MAP STAMP. Weak but identifiable. RF 25, only 5 recorded strikes on Map stamps!" shows '...VILLE/N.S.' on grey oceans Map stamp 	1. AHD-1148 2. PC
	-/SP 22/99	N	2 overlapping strikes	1. ARL67-1165 2. ARL70-1161
	-/NO 23/99	N		PC
	-/DE 2/99	Y	2 overlapping strikes show '...STVILLE/N.S.' on a grey oceans Map stamp	PC
	-/?? ??/00	Y1,4	<ul style="list-style-type: none"> AMR: "a light, but readable strike, crease, 5 strikes known on Maps" very weak, doubled strike shows 'WESTVILLE/N.S.' on grey oceans Map stamp 	1. NP 2. ANP-539 3. AMR-1221 4. PC
Nova Scotia Type 2				
Antigonishe			See Note (2)	
Canso (See Note (3))	-/?? ??/99	N	<ul style="list-style-type: none"> BT: "Dave Handelman reports the first example of CANSO on Map stamp. I have been puzzled by the fact that this town did not show up on Map stamp during the 1970 roster, when the last known date for CANSO is nearly six months later than the issue date of the Map stamp." AJAH: "Canso on stamp, '99 rare Ex Handleman (H-1)" possibly one of the stamps listed below? 	1. BT316-238 2. AJAHDE83-613
	-/J? --/9-	Y1,4	<ul style="list-style-type: none"> ANP: "light strike, only known strike on Map, Fine"; HB: "The single reported Map strike has an illegible date" shows 'CAN.../N.S.' on dark lavender oceans Map stamp 	1. NP 2. ANP-546 3. HB-22 4. PC
	-/JY ??/99	Y	shows 'CANSO/...' on a grey oceans Map stamp	PC
	-/JY 19/99	N		PC
	-/DE ??/99	N	<ul style="list-style-type: none"> ML: "This is a new late date." latest reported date of hammer use on any stamp 	ML206-38
Kentville	-/JA 2/99	N		PC
	-/JA 25/99	Y	almost a SON strike showing 'KENTVILLE/N.S.' on deep blue oceans Map stamp	PC
Maccan	???	N	AWB: "scarce sq circle on Map stamp, faint but decipherable strike, Fine"	AWB-239

Hammer	Strike Date	Image	Description & Comments	Reference
	-/MR 7/99	Y	shows 'MACCAN/...' on pale blue oceans Map stamp	AAN1175-41
	-/AP 3/99	Y4	shows 'MACCAN/...S.' on pale blue oceans Map stamp	1. RA7-91 2. BT361-31 3. HB-27 4. PC
	-/AP 4/99	Y2	shows '...ACCAN/N.S.' on lavender oceans Map stamp	1. HB-27 2. Unknown auction, Lot #1787
	-/MY 29/99	Y1	<ul style="list-style-type: none"> AJAH: "Maccan on stamp MY 29'99 (H-2)" ARW: "SON but very light strike on #86" 	1. AJAHDE83-616 2. ARW-463 3. HB-27
	-/SP 18/99	Y3,6	<ul style="list-style-type: none"> ANP: "fine strike, 2 strikes known (no covers), Fine" AMR: "a fine strike, 2 strikes known on Maps (86)" AJAH: "only two strikes known on Maps" shows 'MACCAN/N.S.' on deep blue oceans Map stamp 	1. NP 2. ANP-548 3. AMR-1219 4. AJAHJY98-490 5. HB-27 6. PC
	-/DE 27/99	Y	shows 'MACCAN/...' on golden yellow oceans Map stamp	PC
Newport Landing	-/?? ?/9	N	likely one of the 2 stamps listed below	AJAHDE83-618
	-/?? ?/99	Y1	<ul style="list-style-type: none"> very weak strike shows '...NDING/N.S.' the indicia information on the scan is illegible 50% strike so likely different than the stamp below 	1. NP 2. ANP-545
	-/?? ?/99	N	ARW: "25% strike on #86, shows '...ANDING, N.S.'. RF 35, shows 7 recorded strikes on map stamp"	ARW-464
	-/AP 4/99	N		PC
	-/OC 10/99	Y	shows '...PORT LANDING/...' on lavender oceans Map stamp	PC
	-/NO 28/99	Y	shows 'NE...DING/N.S.' on lavender oceans Map stamp	ASA28-348
Port Maitland	-/DE 28/98	Y	shows '...MAITLAND/N.S.' on grey oceans Map stamp	PC
	-/?? ?/99	Y	SON but blurry strike shows 'PORT MAITLAND/N.S.' on grey oceans Map stamp	PC
	-/?? 27/99	Y	blurry partial strike shows 'P...ND/N.S.' on deep blue oceans Map stamp	EB-2019
	-/FE 7/98	Y6	<ul style="list-style-type: none"> RA119 states this stamp is ex Pelletier, Bradley year error 98 for 99 SON strike shows 'PORT MAITLAND/N.S.' on deep blue oceans Map stamp 	1. ML199-188 2. RA43-338 3. RA47-360 4. RA119-2 5. HB 6. PC
	-/FE 7/9-	Y1	shows 'PORT MAITLA.../...' on a partially oxidized pale blue oceans Map stamp	1. EB 2. PC
	-/JU 20/99	Y1,3	<ul style="list-style-type: none"> SON shows 'PORT MAITLAND/N.S.' AJAH: "Port Maitland on stamp JU 20'99 (H-8)" could be JU 2/99?? 	1. NP 2. ANP-545 3. AJAHDE83-623
	-/JY 10/99	Y	shows 'PORT MAI.../N...' on a grey oceans Map stamp	ASA28-348
	-/JY 20/99	N		PC
	-/AU 1/99	N		PC
Whycocomagh	AM/FE 1/99	N		PC
	AM/FE 22/99	Y	<ul style="list-style-type: none"> shows 'WH...AGH/N.S.' on a deep blue oceans Map stamp slightly cut down top right 	PC
	PM/MR 3/99	Y1,2,3	<ul style="list-style-type: none"> RA: "the first off-cover strike on a Map stamp" AWB: "unreported off-cover, Fine" almost SON strike shows 'WHCOCO.../N.S.' on muddy waters Map stamp 	1. RA41-326 2. AWB-240 3. PC

Hammer	Strike Date	Image	Description & Comments	Reference
Wolfville	???	N	<ul style="list-style-type: none"> AJAH: "a light blurred strike (H-4)" ARW: "light 60% strike on #86 unable to read date, N.S. off stamp. Small thin. RF 55, 4 recorded strikes on map stamp" AWB: "faint but decipherable strike" 	1. AJAHDE83-632 2. ARW-474 3. AWB-239
	-/-- 23/-9	Y	partial strike shows '...VILLE/...' on a lavender oceans Map stamp	PC
	-/JA 11/99	Y	2 partial strikes show 'WOLFVILLE/...' on pale blue oceans Map stamp	PC
	-/JA ?/04	Y1,4	<ul style="list-style-type: none"> this stamp is a Major Re-entry at plate position 2-A-37 RA, Gordon states: "I have a 1904 date on a Map; the month/day are not clear but the partial 04 is clear, I've had this stamp for 4 years & just now noticed the date." shows 'WOLFVILLE/...' on dark blue oceans Map stamp latest reported date of hammer use on any stamp latest reported date of use of a Squared Circle hammer on any Map stamp 	1. NP 2. ANP-545 3. RA118-1 4. PC
Yarmouth, State 2 (See Note (4))	??/(2?)0 DE/ 98	Y1,5,6	<ul style="list-style-type: none"> ARL: "?/20 DE/98 40% strike on 2c MAP STAMP #85, shows '....TH/N.S.'. Stamp thinned. FIRST REPORTED MAP STAMP STRIKE!" RA49 lists date as ?/20 DE/98 AWB: "faint -0 DE/98 strike, unreported in handbook" golden oceans Map stamp 	1. ARL45-1058 2. RA49-373 3. AWB-241 4. HB-38 5. RA110-4 6. PC 7. RA136
New Brunswick Type 2				
Baie Verte	-/?? ?/?/9?	Y	<ul style="list-style-type: none"> weak strike shows 'BAIE.../N.B.' on a blue oceans Map stamp different stamp than below 	PC
	-/JA 1?/9?	Y	weak strike shows 'BAIE.../N.B.' on a blue oceans Map stamp	PC
	-/JA 11/99	N	<ul style="list-style-type: none"> AJAH: "Baie Verte on stamp, JA 11'99, usual lt. strike (H-4)" ARW: "very light but positively identifiable on #86. RF 35, only 4 recorded map strikes" possilby same stamp as above? 	1. AJAHDE83-633 2. ARW-475
	-/JA 17/99	N		PC
	-/JA 18/99	N	same stamp as below?	GN
	-/JA 18/99	N		PC
	-/JA 19/99	Y1		1. NP 2. ANP-553 3. PC
	-/JA 1?/0?	Y	shows 'BAIE VERTE/...' on muddy waters Map stamp	PC
Indiantown	???	N		ANP-553
	AM/JA ?/99	N	same stamp as below?	PC
	AM/JA 7/99	Y1	<ul style="list-style-type: none"> AJAH: "Indiantown on stamp, AM JA 7'99 scarce (H-5)" ARW: "reasonably nice strike on #86. RF 50, only 5 recorded map stamp strikes" 	1. AJAHDE83-634 2. ARW-476
	AM/JA 27/99	Y	SON strike shows 'INDIANTOWN/N.B.' on pale blue oceans Map stamp	PC
	PM/FE 17/??	Y	weak strike shows 'INDIANTOWN/...' on pale blue oceans Map stamp	PC
	AM/FE 21/99	Y	SON strike shows 'INDIANTOWN/N.B.' on grey oceans Map stamp	PC
	??/MR ?/??	N		PC
Milltown	???	N	<ul style="list-style-type: none"> AJAH: "partial light strike" ARW: "very partial 15% strike on #86, identified as Milltown but questionable, only 1 recorded map stamp strike" 	1. AJAHDE83-797 2. ARW-477
River Louison	-/AP 28/99	Y1,5	<ul style="list-style-type: none"> AJAH: "scarce Ex Pelletier (H-1)" ARW: "SON but light strike on #85, only 1 recorded strike. Ex Pelletier" I believe these statements are incorrect since Pelletier's stamp is recorded below on DE 15/99 AWB: "2 copies dated Apr 28 '99 & Dec 15 '99, handbook (#4) states only one copy recorded off cover, both Fine" SON strike shows 'RIVER LOUISON/N.B.' on a golden oceans Map stamp 	1. AJAHDE83-635 2. ARW-478 3. AWB-242 4. HB-43 5. PC
	-/MY 2/99	N		HB-43

Hammer	Strike Date	Image	Description & Comments	Reference
	-/DE 15/99	Y1,2,4	<ul style="list-style-type: none"> • ANP: "only known strike, VG, stamp faulty" • AWB: "2 copies dated Apr 28 '99 & Dec 15 '99, handbook (#4) states only one copy recorded off cover, both Fine" • shows "...LOUISON/N.B.'" on a muddy waters Map stamp 	1. NP 2. ANP-552 3. AWB-242 4. PC
PEI Type 2				
Georgetown	-/MR 20/99	Y	SON strike shows 'GEORGETOWN/P.E.I.' on lavender oceans Map stamp	Squared Circles of PEI - Paul Grimm BNAPEX 2019 Exhibit
	-/AP 17/99	Y	<ul style="list-style-type: none"> • very weak strike shows 'GEOR.../P.E.I.' on light blue oceans Map stamp • co-canceled with a dark cork strike 	PC
	-/JU 1/99	Y1	shows 'GEORGETOWN/...'	1. NP 2. ANP-554 3. PC
	-/FE 27/00	Y2	shows '...GETOWN/...E.I.' on a lavender oceans Map stamp	1. AJAHDE83-638 2. PC
Summerside	-/FE 21/99	Y1-4	<ul style="list-style-type: none"> • dark SON strike shows 'SUMMERSIDE/P.E.I.' • AJAH: "unique Ex Pelletier (H-1)" • ARW: "nice SON but a bit smudgy strike on #86, the UNIQUE strike on map stamp." 	1. NP 2. ANP-554 3. AJAHDE83-639 4. ARW-483
	-/NO 14/99	Y	<ul style="list-style-type: none"> • SON strike shows 'SUMMERSIDE/P.E.I.' on dark blue oceans Map stamp • ref (1): "#86 Fine Two cent map with Summerside PEI, NO 14, 1899 squared circle cancel, only one was reported by Moffat and Hansen." 	1. IK13-1005 2. PC
	-/NO 22/99	N		PC
	-/NO 25/99	Y1,2,3	<ul style="list-style-type: none"> • AMR: "a light but readable strike, the only strike known on a Map stamp" • AHW: "light but legible; only one strike off cover reported on a Map stamp" • weak strike shows 'SUMMERSIDE/...'" on a brownish-grey oceans Map stamp 	1. AMR-1224 2. AHW-274 3. PC
Quebec Type 2				
Acton Vale	???	N		AWB-243
	-/-- 16/99	Y1,2	<ul style="list-style-type: none"> • shows '...N VALE/...UE' on lavender oceans Map stamp • ARB: "very scarce strike, ex. Cohen; only three reported; unknown on cover" 	1. ARB-433 2. PC
	-/-- --/--	Y	shows '...ALE/...E' on lavender oceans Map stamp	PC
	-/OC 7/99	Y	SON shows 'ACTON VALE/QUE' on deep blue oceans Map stamp	PC
Clarenceville	???	N		AWB-243
	-/FE 20/99	Y1,3	<ul style="list-style-type: none"> • shows 'CLARENCEVILLE/...' • AJS: "Mainly sharp strike FE 20 '99, nearly full on 2c blue. Extremely scarce, only 6 known (2 off cover)" 	1. AJS-495 2. DL55-1096 3. ARB-436
	-/AP 17/99	Y	weak partial strike shows 'C...E/QUE' on pale blue oceans Map stamp	PC
	-/AP 27/99	Y	bold SON strike shows 'CLARENCEVILLE/QUE' on muddy waters Map stamp	PC
	-/MY 3/99	Y	SON but broken strike shows '...ARENCEVILLE/QUE' on grey oceans Map stamp	PC
	-/MY 8/99	N	<ul style="list-style-type: none"> • inverted 8 • DL: "a v.f. My 8,99 strike on Map 2c, #85, scarce thus" 	1. RW-31 2. DL50-974 3. DL65-1240
	-/MY 26/99	Y1,2,3	almost SON strike shows 'CLARENCEVILLE/QUE' on a pale blue oceans Map stamp	1. NP 2. ANP-556 3. PC
Farnham	-/JA 28/99	Y2,3	<ul style="list-style-type: none"> • SON strike shows 'FARNHAM/QUE' on deep blue oceans Map stamp • different stamp than below 	1. EB 2. PC 3. RA134-1 4. RA136
	-/JA 28/99	Y	<ul style="list-style-type: none"> • almost SON strike shows 'FARNHAM/,,,,' on deep blue oceans Map stamp • different stamp than above 	PC

Hammer	Strike Date	Image	Description & Comments	Reference
Granby			See Note (5)	
Iberville	???	N		AWB-243
	-/JA 3/99	Y	<ul style="list-style-type: none"> different than stamp below messy strike shows 'IBERVILLE/...' on lavender oceans Map stamp 	PC
	-/JA 3/99	Y	<ul style="list-style-type: none"> different than stamp above SON strike shows 'IBERVILLE/QUE' on lavender oceans Map stamp 	PC
	-/FE 3/99	Y2	<ul style="list-style-type: none"> ARL: "75% strike on 2¢ MAP stamp, 1 pulled perf. Handbook inv. only 2 strikes on maps!" almost SON strike shows 'IBERVILLE/QUE' on pale blue oceans Map stamp 	1. ARL92-2572 2. PC
Lotbiniere	???	N		AWB-243
	-/JA --/--	Y1,2	<ul style="list-style-type: none"> weak strike shows 'LOTBINIE...' on pale blue oceans Map stamp ARB: "rare, only two reported" 	1. ARB-433 2. PC
	-/JA 11/99	Y	bold strike shows 'LOTBINIERE/...UE' on dark blue oceans Map stamp	PC
Melbourne	-/FE 8/99	N		PC
	-/FE 2?/99	Y	weak partial strike shows 'MELB.../Q...' on deep blue oceans Map stamp	PC
	-/MR 7/99	Y1,4,5	<ul style="list-style-type: none"> bold strike shows 'MELBOURNE/...' on greenish blue oceans Map stamp AMR: "a nice strike, 5 known on Map (86)" 	1. NP 2. ANP-555 3. AMR-1228 4. EB 5. PC
Riviere du Loup Station	???	N	<ul style="list-style-type: none"> ARW: "50% strike on #85, unable to read date. Shows 'RIVIERE DU ... QUE'. Stamp is toned, has 1 mm tear. RF 25, only 4 recorded map stamp strikes" possibly the NO 4/99 stamp below? 	ARW-490
	-/?? 18/99	Y1,3	<ul style="list-style-type: none"> SON strike shows 'RIVIERE DU LOUP STATION/QUE' AMR: "a fine strike, 4 known on Maps (86)" 	1. NP 2. ANP-555 3. AMR-1230
	-/JA 3/99	Y1,2	SON strike shows 'RIVIERE DU LOUP STATION/QUE' on a pale blue oceans Map stamp	1. DL79-897 2. SQ
	-/JA 24/--	Y	shows '...DU LOUP STATIO...' on pale blue oceans Map stamp	EB
	-/JA 24/99	Y3	<ul style="list-style-type: none"> shows 'RIVIE....OUP STATION/QUE' on a greenish-blue oceans Map stamp different than stamp above 	1. RL67-1183 2. RL80-1869 3. PC
	-/FE 2?/99	Y	bold SON strike shows 'RIVIERE DU LOUP STATION/QUE...' on deep blue oceans Map stamp	PC
	-/6 AP/99	Y	<ul style="list-style-type: none"> shows '...DU LOUP STATION...' on lavender oceans Map stamp month/day reversed 	PC
	-/MR 10/-9	Y	messy dark strike that shows 'RIVI.../QUE'	RA58-416
	-/NO 4/99	Y	partial strike shows 'RIVIERE DU.../QU...' on discoloured brown Map stamp	PC
St. Anne de Beaupre	-/MR 14/--	Y	<ul style="list-style-type: none"> partial strike shows '...ANNE DE BE...' on muddy waters Map stamp RA41: "the first reported Map strike for the hammer; partially dated -/MR 14/?" AWB: "unreported in handbook (#4), Fine" ARB: "Also another example (Plate 3 Position 57) showing neat and large portion of St. Anne de Beaupre Type II squared circle (-/MR 14) cancel, tiny corner crease - the only known strike on a Map stamp, unknown on cover." second latest reported date of use of the hammer 	1. MS8-7 2. RA41-326 3. ML219-85 4. AWB-244 5. HB-70 6. ARB-434 7. PC 8. RA136
St. Gregoire (See Note (6))	???	N		AWB-243
	--/-- --/-	Y1,2	<ul style="list-style-type: none"> originally assigned as Lotbiniere partial strike shows '...RE/...UE' on deep blue oceans Map stamp different stamp than below 	1. RA123-1 2. PC
	--/-- --/-	Y	<ul style="list-style-type: none"> partial strike shows '...OIRE/...' on blue-green oceans Map stamp different stamp than above 	ASA28-348

Hammer	Strike Date	Image	Description & Comments	Reference
	--/?? 22/-	Y	partial strike shows '...RE/...UE' on pale blue oceans Map stamp	EB
	99/-- 23/-	Y	partial bold strike shows '...GOIRE/...UE' on pale blue oceans Map stamp	PC
	--/FE 14/-	Y1,2	partial strike shows 'S...RE/QUE' on deep blue oceans Map stamp	1. ARB-433 2. PC
	99/FE 20/-	Y1	<ul style="list-style-type: none"> SON strike shows 'ST. GREGOIRE/QUE' on pale blue oceans Map stamp DL: "could be the best known strike" 	1. DL73-1285 2. PC
	99/NO 27/-	Y1,2	shows 'ST. G...RE/QUE' on grey oceans Map stamp	1. DL73-1284 2. PC
Victoriaville	-/A --/--	Y3	<ul style="list-style-type: none"> partial strike shows 'VICTOR...' on a pale blue oceans Map stamp DL: "partial on a faulty 2¢ Map #86, unreported?" DL & RA do not report a date could be either AP or JA, only A definite stamp thin 	1. DL73-1288 2. RA94-1 3. PC 4. RA136
Ontario Type 2				
Acton, Hammer 2	-/FE ??/99	N	possibly one of the FE stamps below	ML174-144
	-/FE 4/99	Y1	<ul style="list-style-type: none"> AJAH: "Acton on stamp, FE 23'99 (H-3)" note incorrect date listed in ref (1) ARW: "fair SON strike on #86. RF 30, only 3 recorded map stamp strikes" 	1. AJAHDE83-649 2. ARW-493
	-/FE 23/99	Y	partial strike shows '...CTON...' on deep blue oceans Map stamp	PC
	-/?Y 5/99	Y	partial strike shows '...CTON/ONT.' on lavender oceans Map stamp	PC
Alma, State 2	-/JY 4/99	Y1,3	<ul style="list-style-type: none"> almost full strike shows 'ALMA/ONT.' on lavender oceans Map stamp co-cancelled with 9-bar circular grid Whit Bradley reported this stamp in RA so even though it is not specifically identified by strike date in AWB, it can be assumed to be the same stamp 	1. RA43-338 2. AWB-245 3. PC
Athens			See Note (7)	
Aurora	???	Y1,2,3	<ul style="list-style-type: none"> ANP: "light strike, 2 known (none on cover), VG" AMR: "a light strike, 2 known on Maps" weak strike shows 'AURO.../ONT' different stamp than the stamp below with a weak strike of MY 9 	1. NP 2. ANP-562 3. AMR-1232
	-/MY 9/99	Y	weak strike shows 'AUR.../ONT' on lavender oceans Map stamp	DS
	-/DE --/99	N	<ul style="list-style-type: none"> AWB: "faint, Aurora Dec '99" DL: "showing AUR...De - ONT; scarce, (2) only" 	1. AWB-248 2. DL86-1185
	-/DE 20/99	Y	weak strike shows '...URORA/ONT.' on brown oceans Map stamp	PC
Aylmer West			See Note (8)	
Bobcaygeon, State 2	???	N		AJT23/24-173
	-/JA --/9-	Y	shows 'BOBC.../O...' on pale blue oceans Map stamp	EB-2019
	-/JA 17/99	Y1	<ul style="list-style-type: none"> shows '...CAYGEON...' ABM: "lt. 90% strike on 2¢ MAP. RF 25. SCARCE ON MAPS" 	1. NP 2. ABM-1021
	-/JA 20/--	N	AJAH: "Bobcaygeon on stamp, JA 20 ? (H-9)"	AJAHDE83-653
	-/AU 29/99	N	ARL: "80% lt. strike on 2¢ MAP STAMP. RF 25, only 9 reported strikes on map stamps"	ARL41-951
	-/JA 11/00	N		PC
	-/DE 20/00	Y	partial strike shows 'BOBCAYG...' on lavender oceans Map stamp	PC
Bracebridge	???	N		AWB-245
	-/JA 3/99	Y1,2	<ul style="list-style-type: none"> shows '...CEBRIDGE/ONT.' ABM: "75% strike on 2¢ MAP. RF 25. SCARCE ON MAP!" 	1. ABM-1024 2. PC
	-/JA 9/99	N		PC
	-/JA 27/99	N		PC
	-/JA 28/9(9)	Y	shows 'BRACEBRIDG...' on a blue oceans Map stamp	PC
	-/JA 28/99	Y	almost SON strike shows 'BRACEBRIDGE/ONT.' on deep blue oceans Map stamp	PC

Hammer	Strike Date	Image	Description & Comments	Reference
	-/JA 31/99	Y1,2	<ul style="list-style-type: none"> almost SON strike shows 'BRACEBRIDGE/ONT.' AJS: "Sharp and nearly full strike JA 31 '99 on grubby 2c blue. Extremely scarce, 5 known all off cover" 	1. AJS-496 2. ARL75-1586
	-/FE 24/99	Y1,2	<ul style="list-style-type: none"> almost SON strike shows 'BRACEBRIDGE...' ARW: "SON 80% strike on #86, 'ONT' off stamp. RF 25, only 5 recorded map stamp strikes" 	1. AJAHDE83-655 2. ARW-497
	-/JU 6/99	Y1	shows 'BRACEBRIDGE...'	1. NP 2. ANP-560 3. PC
Brantford			See Note (9)	
Cache Bay	???	N	ML: "This is known on map stamp now."	ML206-39
	???	N	described as "the first Map report"	RA107-1
	-/AU 23/99	Y	<ul style="list-style-type: none"> very weak but full strike that shows 'CACHE BAY/ONT' on a brown oceans Map stamp unknown whether 2 references that lack strike information (ML206-39 and RA107-1) are citing this stamp 	1. PC 2. RA136
	-/SP 18/99	N		PC
Cheltenham	???	N		AWB-245
	-/JA 10/00	Y1,2	a 90% strike shows 'CHELTENHAM/ONT' on a pale blue oceans Map stamp	1. ARL70-1168 2. PC
	-/JA 12/0-	Y1,2,3	<ul style="list-style-type: none"> shows '...HELTEN...' on a Map stamp on piece the strike is faint so the date assignment is questionable AMR: "a light strike on piece, 3 known on Maps" AJAH: "light and partial -/JA 12/0? On 2c Map stamp (4 stamps recorded)" 	1. NP 2. ANP-564 3. AMR-1238 4. AJAHSP00-587
	-/AU 12/0?	N		PC
Cobden	-/DE 20/98	Y	<ul style="list-style-type: none"> SON, but doubled strike, shows 'COBDEN/ONT.' on a pale blue oceans Map stamp bit of toning along edges 	PC
	-/OC 27/99	Y1,2	<ul style="list-style-type: none"> shows 'COBDEN/...T.' ARW: "75% strike on #85. RF 30, only 2 recorded map stamp strikes" 	1. AJAHDE83-657 2. ARW-498
Formosa, Hammer 2, State 2	???	N		ARL73-1221
	???	N	part of a lot of 10 stamps	AMA2002-2503
	??/??/99	N	ARW: "unable to read date SON but light strike on #86. Hammer II, state 2. RF 35, 10 recorded map stamp strikes."	1. AJAHDE83-664 2. ARW-504 3. PC
	?/8/99	N	AHD: "weak strike on 2c MAP STAMP."	AHD-1283
	JA/4/99	N		PC
	FE/9/99	Y	shows 'FORMOSA/ONT.' on deep blue oceans Map stamp	PC
	FE/13/99	N		PC
	FE/17/99	Y	strong strike shows 'FORMOSA/ON...' on deep blue oceans Map stamp	PC
	MR/3/99	Y1,3	SON strike shows 'FORMOSA/ONT.' on lavender oceans Map stamp	1. NP 2. ANP-560 3. PC
	MR/6/99	N		PC
	MR/?8/??	Y	partial strike shows '...MOSA/...' on dark bronze oceans Map stamp	PC
	MR/31/99	Y	SON strike shows 'FORMOSA/ONT.' on bronze oceans Map stamp	AAN1098-41
Glamis (See Note (10))	??/99	N	ARW: "unable to read date, 50% strike on #86, 'ONT' off stamp. RF 35, 9 recorded map stamp strikes"	1. AJAHDE83-667 2. ARW-507 3. PC
	-/FE 22/??	Y	weak strike shows 'GLAMMIS/...' on light bronze oceans Map stamp	PC
	-/MR 13/99	Y	<ul style="list-style-type: none"> SON but smudgy strike shows 'GLAMMIS/ONT.' on a lavender oceans Map stamp note normal date arrangement 	PC

Hammer	Strike Date	Image	Description & Comments	Reference
	-/MR 17/99	Y1	<ul style="list-style-type: none"> • nearly full strike shows 'GLAMMIS/ONT.' • note normal date arrangement • AJS: "Quite clear strike MR 17'99 nearly full on 2¢ gray. Very scarce, only 10 strikes known" 	1. AJS-499 2. DL55-1097 3. PC
	-/MR 29/99	N	<ul style="list-style-type: none"> • DL53: "on 2¢ Map, very few reported" • note normal date arrangement 	1. DL53-1090 2. DL65-1241
	-/AP 11/99	Y1,3	<ul style="list-style-type: none"> • partial strike shows '...MMIS/ONT.' on a lavender oceans Map stamp • note normal date arrangement 	1. NP 2. ANP-560 3. PC
	-/NO 22/99	N		PC
Glencoe (See Note (11))	nude	Y1,3	<ul style="list-style-type: none"> • different stamp than the other 2 scanned stamps • SON strike shows 'GLENCOE/ONT.' on lavender oceans Map stamp 	1. NP 2. ANP-560 3. JHE
	nude	Y	<ul style="list-style-type: none"> • different stamp than the other 2 scanned stamps • partial strike shows 'GLENCOE/...T' on deep lavender oceans Map stamp 	PC
	nude	Y	<ul style="list-style-type: none"> • different stamp than the other 2 scanned stamps • SON strike shows 'GLENCOE/ONT.' on pale brown oceans Map stamp 	PC
	nude	N	<ul style="list-style-type: none"> • unlikely it is the same stamp as one of those above since ref (2) reads "... shows 'GLENC.. ONT' " and all of the stamps above show the complete town name • AJAH: "NUDE rare but all Map strikes are nudes. Ex Whitehead & Doull" • ARW: "light 60% strike on #85, shows 'GLENC.. ONT'. RF 25, 9 recorded map stamp strikes, all are nude. Ex Whitehead/Doull" 	1. AJAHDE83-669 2. ARW-509
Gravenhurst	???	N		ANP-560
	PM/JA 17/99	N		PC
	PM/JA 5/99	N	<ul style="list-style-type: none"> • ARW: "60% strike on #86, shows 'GRAVENHURS. O..'. RF 25, only 6 recorded map stamp strikes" • ABM: "lt. 65% strike on 2¢ MAP. RF 25. SCARCE ON MAP." 	1. AJAHDE83-674 2. ARW-513 3. ABM-1045 4. DL86-1188
	PM/MR 28/99	Y	full strike to the left of a lavender oceans Map stamp on piece	PC
Harriston	-/JU 9/99	Y	<ul style="list-style-type: none"> • bold partial strike shows 'HARRIS.../ONT' on a lavender oceans Map stamp • ANP: "partial, only known strike, VG" • ARW: "60% strike on #85, shows 'HARRIS...ONT', this is the UNIQUE map stamp strike" 	1. NP 2. ANP-567 3. AJAHDE83-675 4. ARW-514 5. ABC86-473 6. ABC89-602 7. PC
	-/SP 1-/99	Y	<ul style="list-style-type: none"> • partial strike shows 'HARRIS.../ON...' on a lavender oceans Map stamp • same date as the unique Map stamp cover 	1. EB 2. PC
Kincardine	-/AP 06/99	Y2,4,5 6,7,9	<ul style="list-style-type: none"> • light partial strike shows 'KIN...DINE/ONT.' on a dark brown oceans Map stamp with a zero spacer in the day • date listed incorrectly in RA12 and ML as -/OC 6/99 • date listed incorrectly in JHE as -/MR16/99 • ANP: "light strike, only known strike" • AMR: "a partial strike, THE ONLY KNOWN STRIKE ON A MAP STAMP" • AJH: "light strike on 2¢ Map, Fine" • date finally corrected in RA110 which reads "the Map strike (believed unique) in the Hennok collection turns out to be dated OC/AP 06/99; this is really weird" (did he actually mean OC for off-cover? since there is no OC on the stamp) • See Note (12) 	1. BT372-31 2. RA12-134 3. ML174-144 4. ANP-569 5. AMR-1242 6. JHE 7. AJH-2107 8. RA110-1 9. PC 10. RA136

Hammer	Strike Date	Image	Description & Comments	Reference
Kingston, Hammer 2	4/DE 7/98	Y1,3,4 5	<ul style="list-style-type: none"> SON strike shows 'KINGSTON/ONT.' on a lavender oceans Map stamp earliest off-cover Squared Circle cancel on a Map stamp was the earliest Squared Circle cancel known on Map stamp prior to the St. Hyacinthe cover find dated AM/DE 6/98 AHW: "Well centered single with lavender oceans, showing a central clear Kingston, Ont. (4/DE 7/98) squared circle; a very scarce First Official Date postmarked stamp, VF" different stamp than stamp below 	1. NP 2. BT372-31 3. AHW-249 4. AANFE17-33 5. PC
	4/DE 7/98	Y	<ul style="list-style-type: none"> ARL: "nice SON strike on 2c MAP stamp #85. LRD for this hammer & FIRST DAY FOR THE MAP STAMP!" different stamp than stamp above 	ARL100-2199
Lanark	-/?? ??/99	Y	shows '...RK/...NT' on a greenish-grey oceans Map stamp	PC
	-/?? 17/99	N		PC
	-/JY 21/99	Y1,2	<ul style="list-style-type: none"> SON strikes shows 'LANARK/ONT.' on a lavender oceans Map stamp ARL: "80% strike on 2c MAP STAMP #85. RF 30, only 4 reported strikes on Map stamps!" 	1. ARL42-1532 2. PC
	-/O 23/99	N		PC
	-/NO 25/99	Y	<ul style="list-style-type: none"> shows '...ANARK/ONT.' auction listing: "80% strike on 2c MAP stamp #85, sm. stain. (RF 30). SCARCE ON MAPS!" 	ARL74-1516
London (See Note (13))	???	N		1. RA7-92 2. BT61-32
	???	N		AWB-246
	PM/JA 21/99	Y2	<ul style="list-style-type: none"> 2 overlapping cancels only PM TM on off-cover Map stamp 	1. EB 2. PC
	9/FE 3/00	Y	weak strike shows '...DON...' on lavender oceans Map stamp	PC
	24/FE 3/00	Y1,2,3	<ul style="list-style-type: none"> complete strike shows 'LONDON/ONT' on deep blue oceans Map stamp BT: "The London hammer had not been known during the map period, except for about a week in 1900". ANP incorrectly lists date as FE 5/00: "VG strike, 2 strikes known, stamp faulty" 	1. NP 2. BT372-31 3. ANP-570 4. PC
	11/FE 9/00	Y	complete strike shows 'LONDON/ONT' on pale blue oceans Map stamp	PC
	18/FE 9/00	N	75% strike, crease	ARL63-1659
	20/FE 9/00	Y	<ul style="list-style-type: none"> full bold strike shows 'LONDON/ONT' on lavender oceans Map stamp 2 overlapping cancels but second cancel is very light 	PC
	?/FE 10/00	N	AJAH: "London on stamp, FE 10'00 Ex Cohen (H-2)"	AJAHDE83-686
	?/FE 13/00	N	ARW: "unable to read date but appears to be FE 13/00 about 50% partial strike on #85. Shows 'L...N, ONT'. RF 10 but only 2 recorded map stamp strikes"	ARW-526
Manitowaning	???	N		AWB-246
	???	N		AHD-944
	???	Y1	<ul style="list-style-type: none"> date illegible weak strike shows '...ITOWANING...' based on the image, it is none of the stamps listed below 	1. NP 2. ANP-560
	-/JA ??/99	Y	partial strike shows '...NITOWANING...' on pale blue oceans Map stamp	1. EB 2. PC
	-/AP 1/99	Y	SON but faint strike shows '...TOWANIN...' on lavender oceans Map stamp	PC
	-/?P 11/99	N	ARW: "50% strike on #85, shows '...OWANING...' RF 30, only 4 recorded map stamp strikes"	1. AJAHDE83-689 2. ARW-529
	-/DE 19/99	Y	full strike on a lavender oceans Map stamp on piece	PC
	19/JA 6/00	Y	<ul style="list-style-type: none"> partial weak strike shows 'MANITO.../ON...' on pale blue oceans Map stamp 1 of 12 strikes reported in 1900 (split year date) 	PC
Mattawa	???	N	reported as an illegible date	PC

Hammer	Strike Date	Image	Description & Comments	Reference
	???	Y1	<ul style="list-style-type: none"> partial strike with unreadable date shows 'MATT...' is not one of the scanned stamps below possibly could be the JA 7 stamp? 	1. NP 2. ANP-560
	-/-- 29/--	Y	partial strike shows '...TTAWA/...NT' on deep blue oceans Map stamp	PC
	-/JA 1/99	Y	very weak strike shows only 'M...' on pale blue oceans Map stamp	PC
	-/JA 7/??	N	<ul style="list-style-type: none"> AJAH: "strikes on Map poorish (H-7)" ARW: "very light but identifiable 60% strike on #86, shows 'MATTA..' RF 20, 7 recorded strike on map stamp" 	1. AJAHDE83-692 2. ARW-532
	-/JA 9/99	Y	shows 'MATT.../O...' on light blue oceans Map stamp	PC
	-/JA 22/99	Y	shows 'MATTAWA/...' on light blue oceans Map stamp	PC
	-/JA 29/99	Y	blurry partial strike shows '...ATTAWA...' on greenish-blue oceans Map stamp	PC
	-/FE ?/99	Y	partial strike shows 'MATT...' on dull brownish oceans Map stamp	PC
	-/FE ?/--	Y	blurry partial strike shows '...ATTAW...' on blue oceans Map stamp	PC
Mitchell	???	N	<ul style="list-style-type: none"> AJAH: "partial light strike" ARW: "very partial strike on #85, shows '....HEL...' only. Could be questioned. No readable date. RF 20, only 2 recorded map stamp strikes" 	1. AJAHDE83-798 2. ARW-538 3. HB-131
	-/JA 3/99	N		HB-131
	-/FE 4/99	Y	shows 'MITCHELL/ONT.' on a deep blue oceans Map stamp	PC
	-/MR 11/99	N	<ul style="list-style-type: none"> second latest strike on any stamp ANT: "90% strike on 2¢ MAP stamp, thin. ONLY 2 REPORTED STRIKES ON MAP STAMP!" 	1. ANT-725 2. HB-131
Nassagaweya			See Note (14)	
Niagara	-/MR 16/99	Y1,3	<ul style="list-style-type: none"> 2 SC strikes on piece, one canceling the Map stamp second reported strike in Period 2 ANP: "on piece (corner missing on stamp) only known strike" AJAH: "ex Cohen & Pelletier (H-1)" ARW: "poor strike ties #85 to piece, also has nice free strike. Sm. piece of UR corner of stamp missing. RF 25, only 1 recorded strike on map stamp. Ex. Cohen, Pelletier" 	1. ANP-572 2. AJAHDE83-698 3. ARW-540 4. HB-134
Niagara Falls South	-/?? 1/9?	Y1,3	<ul style="list-style-type: none"> almost SON strike shows 'NIAGARA FALL SOUTH/ONT.' on a deep blue oceans Map stamp date and year not fully legible 	1. NP 2. ANP-560 3. PC
	-/JA 2/99	Y	partial strike shows '...GARA FALLS SOUTH/ONT.' on light blue oceans Map stamp	PC
	-/AP 28/99	N		PC
	-/DE 11/-9	Y	partial smudgy strike shows '...FALLS SOUTH...' on lavender oceans Map stamp	PC
Orillia	-/JA 26/99	Y1-4	<ul style="list-style-type: none"> SON strike shows 'ORILLIA/ONT.' on bright blue oceans Map stamp ANP: "VG strike, 2 strikes known, stamp thinned" RA reports that this stamp was probably in Nels Pelletier's collection 	1. ANP-574 2. RA110-4 3. SC 4. PC
	-/FE 14/99	N		PC
	AM/OC 5/99	N	ARL: "80% strike on 2¢ MAP STAMP #86, very scarce on map stamp, only one cover & one stamp noted in Handbook inventory! Stamp VG centred, small thin"	ARL43-1238
	?/OC 30/99	N	AWB: "scarce squared circle strike, faint"	AWB-248
Owen Sound			See Note (15)	
Oxford Mills	-/?? 7/??	Y	partial strike shows '...RD MILLS...' On pale lavender oceans Map stamp	PC
	-/JA 7/99	Y1,3	<ul style="list-style-type: none"> AHD: "lt. 80% strike on 2¢ MAP STAMP, shows 'O.....ILLS/ONT'. One missing perf. ONLY 2 RECORDED ON MAP STAMPS!" very pale blue oceans Map stamp 	1. AHD-969 2. HB-138 3. PC
	-/JA 25/99	Y	weak strike shows 'OXFOR...S/ONT.' on a pale blue oceans Map stamp	PC
	-/?E 2/99	N	possibly the stamp below	PC

Hammer	Strike Date	Image	Description & Comments	Reference
	-/FE 2/99	Y1	partial strike shows '...MILLS/ONT.'	1. NP 2. ANP-560
	-/FE 20/99	N		HB-138
	-/MR 13/99	Y	partial weak strike shows 'OXFORD M...' on pale lavender oceans Map stamp	PC
	AM/NO ?/99	N	<ul style="list-style-type: none"> only reported AM TM on any stamp AJAH: "Oxford Mills on stamp, AM ? 10 ? (H-2)" 	1. AJAHDE83-702 2. HB-138
Paisley	???	N		AJH-2250
	-/-A 19/99	Y	partial strike shows '...SLEY/ONT.' on greenish blue oceans Map stamp	EB
	-/JA 21/99	Y1,3	<ul style="list-style-type: none"> bold SON strike shows 'PAISLEY/ONT.' on dark greenish blue oceans Map stamp different stamp than below 	1. NP 2. ANP-560 3. PC
	-/JA 21/99	Y	<ul style="list-style-type: none"> SON strike shows 'PAISLEY/ONT.' on deep blue oceans Map stamp different stamp than above 	PC
Rockton	-/JA 12/99	N		PC
	-/MR 4/--	Y2	<ul style="list-style-type: none"> partial strike shows 'ROCKTON...' on lavender oceans Map stamp no year showing so 1899 is assumed but in theory could be 1900 or later 	1. HB-153 2. PC
	-/-P 13/99	Y	partial strike shows '...KTON/...NT' on pale golden oceans Map stamp	PC
	-/FE 9/00	N		PC
Rodney	???	N		AWB-247
	-/D- --/(9?)-	Y	doubled strike shows '...OD.../ONT' on pale blue oceans Map stamp	PC
	-/DE 15/99	Y1,3,4 5	<ul style="list-style-type: none"> bold partial strike shows 'RODNEY/...' on greyish blue oceans Map stamp RA reports that this stamp was probably in Nels Pelletier's collection hole/tear in stamp 	1. NP 2. ANP-560 3. RA110-4 4. SC 5. PC
Roseneath	-/JA 5/99	Y	weak SON strike shows 'ROSENEATH/ONT.' on pale greenish-grey oceans Map stamp	PC
	-/MR 18/99	N		HB-155
	-/NO 10/99	Y1,8	<ul style="list-style-type: none"> this was the first reported off-cover Map strike ARW: "light 50% strike on #85, shows '...SENEATH,...' Date could be questioned. No recorded map strikes but 3 on cover." RA: "first example reported on an off-cover Map stamp" AWB: "faint strike, unreported off-cover" shows '...SENEATH/ONT' on pale blue oceans Map stamp 	1. NP 2. ANP-560 3. AJAHDE83-713 4. ARW-556 5. RA47-360 6. AWB-252 7. HB-155 8. PC
	-/NO 17/99	Y1,2	weak SON strike shows 'ROSENEATH/ONT.' on grey oceans Map stamp	1. PC 2. EB-2019 3. PC
	-/DE ??/99	N		1. HB-155 2. PC
Sault Ste. Marie	???	Y1	illegible strike	1. NP 2. ANP-560
	PM/JA 19/99	Y	<ul style="list-style-type: none"> full strike shows 'SAULT STE. MARIE/ONT.' AHD: "nice 80% strike on 2¢ MAP STAMP. RF 15 but only 6 recorded on Map stamps! Some age stain on back" 	1. AHD-994 2. PC
	AM/JA 22/99	Y	weak strike shows 'SA...T MARIE/ONT.' on deep blue oceans Map stamp	PC
	AM/JA 24/99	Y	partial messy strike shows '...MARIE/ONT.'	RA58-416
	AM/FE 23/99	N		PC
	AM/MR 1/99	Y	SON strike on lavender oceans Map stamp	ASA28-348
	AM/MR 11/99	N	ARL: "80% strike on 2¢ MAP STAMP #85. A grid bar cancel partially obscures the sq. cir. RF 15, inv. 6 on Map stamps"	ARL42-1542

Hammer	Strike Date	Image	Description & Comments	Reference
Schreiber, State 2	-/?? 28/99	Y	<ul style="list-style-type: none"> stamp was part of the A.D. Hanes collection and a poor scan is shown in the newsletter SON strike shows 'SCHREIBER/ONT' 	MS11-98
	-/JA 10/99	Y	partially doubled strike shows 'SCHREIBER/ONT.' on pale blue oceans Map stamp	PC
	-/JA 31/99	Y	shows '...BER/ONT.' on deep blue oceans Map stamp	PC
	-/FE 10/99	N	ANB: "It. SON strike on 2¢ MAP STAMP. (RF 40, 7 recorded on map stamps)"	1. ANB2-1874 2. PC
	-/AP 13/99	Y1		1. NP 2. ANP-560
	-/AP 14/99	N		PC
	-/AP 15/99	Y2,3	<ul style="list-style-type: none"> almost SON strike shows 'SCHREIBER/ONT' ARW: "nice SON strike on #85. RF 40, 7 recorded on stamp" 	1. AJAHDE83-718 2. ARW-559 3. FF-55
	-/AP 29/99	Y	SON strike shows 'SCHREIBER/ONT.' on grey oceans Map stamp	PC
	-/SP 19/99	Y	2 overlapping SON strikes show 'SCHREIBER/ONT.' on lavender oceans Map stamp	PC
	-/SP 26/99	N		PC
Shakespeare	-/DE 31/98	Y	<ul style="list-style-type: none"> inverted 8 in 98 SON but partially faded strike shows 'SHAKESPEARE/O...' on light blue oceans Map stamp 	PC
	-/FE 10/99	Y1,3,4	<ul style="list-style-type: none"> DL: "exceptional inverted strike, ex Hennok" SON strike shows 'SHAKESPEARE/ONT.' on grey oceans Map stamp 	1. NP 2. ANP-560 3. JHE 4. DL86-1191
	-/MR 3/99	Y2	SON strike shows 'SHAKESPEARE/ONT.' on grey oceans Map stamp	1. ARL42-1544 2. PC
	-/MR 15/99	N	ABM: "80% strike on 2¢ MAP, bit of stain. RF 30"	ABM-1071
	-/MR 17/99	N	<ul style="list-style-type: none"> AJT: "85 used with scarce strike of "Shakespeare MR 17 99" Sq. Circle cancel. Stamp fine. Date readable but could be better." different than stamp below 	1. AJT2-165 2. PC
	-/MR 17/99	Y	<ul style="list-style-type: none"> AVA: "SON strike 17 Mr '99 on 2c Map stamp. A great strike! Stamp has one missing corner" SON strike shows 'SHAKESPEARE/ONT.' on grey oceans Map stamp different than stamp above 	AVA340-5508
	-/AP 27/99	N	AHD: "80% strike on 2¢ MAP STAMP"	AHD-997
	-/DE 2/99	N		ABC86-492
Stirling	-/J? ??/99	Y	<ul style="list-style-type: none"> different stamp than below weak strike shows 'STIRLING/ONT' on grey oceans Map stamp 	ASA26-259
	-/J? ??/99	Y	<ul style="list-style-type: none"> different stamp than above weak strike shows 'STIRLING/O...' on light blue oceans Map stamp 	PC
	-/JA 19/99	Y	shows 'STIRLI.../ONT.' on blue oceans Map stamp	PC
	-/FE 13/99	Y1	ARW: "SON but light strike on #85. RF 25, 7 recorded map stamp strikes." shows 'STIRLING/ONT'	1. AJAHDE83-722 2. ARW-563
	-/FE 18/99	N	AHD: "It. but nice 80% strike on 2¢ MAP STAMP. RF 25, 7 recorded strikes on Map stamps"	AHD-1002
	-/MR 1/99	Y1	shows 'STIRLING/ONT.'	1. NP 2. ANP-560 3. DL86-1195 4. PC
	-/MR 8/99	N		PC
	-/JU ?0/99	Y	shows 'STIRL.../ONT.' on bright blue oceans Map stamp	EB
Stouffville	*/AP 6/00	N		ML206-39
Strathroy	???	N		AWB-247

Hammer	Strike Date	Image	Description & Comments	Reference
	???	N		AJH-2250
	-/DE 19/98	Y1,2,3	<ul style="list-style-type: none"> bold SON strike shows 'STRATHROY/ONT.' on pale blue oceans Map stamp RA reports that this stamp was probably in Nels Pelletier's collection 	1. RA110-4 2. SC 3. PC
	-/DE 27/99	Y1-4	<ul style="list-style-type: none"> bold SON strike shows 'STRATHROY/ONT.' ANP: "fine strike, De 27'99, 3 known strikes, 1 only on stamp, Fine" AMR: "a VF strike, THE ONLY KNOWN STRIKE on a Map off cover (2 on cover)" 	1. NP 2. ANP-578 3. AMR-1252 4. JHE
Tara	???	N	AJAH: "usual poor strike"	AJAHDE83-730
	???	N	illegible strike	NP
	-/NO 3/99	N	Whit Bradley reported the stamp in ref (1) so although the auction listing in ref (2) does not give a date, it is most likely the same stamp	1. RA47-360 2. AWB-256
Tilsonburg			See Note (16)	
Waterloo (See Note (17))	nude	N	<ul style="list-style-type: none"> AMA: "with WATERLOO, ONT SQUARED CIRCLE, nude date, apparently scarce, only 4 reported as existing" unknown if it is one of the stamps listed below 	AMAMY89-2084
	nude	N	<ul style="list-style-type: none"> ABM: "nude date lt. 85% strike on 2c MAP, crease. CAT. SHOWS 3 STRIKES ON MAPS, ALL NUDE STRIKES OF WHICH WE CAN ASSUME THIS IS ONE OF THEM" unknown if it is one of the stamps listed below 	ABM-1084
	nude	N	unknown if it is one of the stamps listed below	AWB-247
	nude	Y3	<ul style="list-style-type: none"> on piece AJAH: "squared circle, nude date, fine strike (one of four recorded on a map) tied to portion of small piece, creased" full strike shows 'WATERLOO/ONT' on pale blue oceans Map stamp different than piece below 	1. AMAJU92-961 2. AMW-370 3. PC
	nude	Y	<ul style="list-style-type: none"> on piece showing 'ABC STAMP COMPA...' full strike shows 'WATERLOO/ONT' on pale blue oceans Map stamp different than piece above 	PC
	nude	Y1,2	SON strike shows 'WATERLOO/ONT.' on dark blue oceans Map stamp	1. AMW-370 2. PC
Wellington	99/??/10/-	Y1,2	full strike shows 'WELLINGTON/ONT.' on dark blue oceans Map stamp that has partially oxidized	1. PC 2. RA124-1 3. RA136
Weston			See Note (18)	
Warton	???	N		ANP=560
	-/JA ??/99	Y	smudgy strike shows 'WIARTON/...T' on dark blue oceans Map stamp	PC
	-/JA 23/99	Y	<ul style="list-style-type: none"> shows 'WIAR.../ONT.' on a deep blue oceans Map stamp earliest reported date of use in Period 3 	PC
	-/JA 24/99	Y1	<ul style="list-style-type: none"> AJAH: "indistinct 1899 date" ARW: "unable to read date, smudgy SON strike on #86, short corner perf. RF 60, only 3 recorded map stamp strikes. A scarce squared circle by itself!" 	1. AJAHDE83-751 2. ARW-589 3. PC
	-/-? 25/--	Y	<ul style="list-style-type: none"> partial strike shows '...ARTON/...' on lavender oceans Map stamp ASA: "2c Map showing "ARTON", rare" 	ASA27-1210
Williamstown	-/DE 24/98	Y2	<ul style="list-style-type: none"> inverted 8 SON strike on a brownish-green oceans Map stamp AJT: "No. 85 Map stamp cancelled with full strike "Williamstown De 24 98, Not." Sq. circle cancel. Stamp thin, nice strike on well entered stamp. Only a few exist on map." 	1. AJT5/6-159 2. ML174-144 3. PC
Winona	???	N	ARW: "unable to read date, SON strike on #85, couple tiny stains. RF 25, 7 recorded map stamp strikes"	ARW-593
	???	N	AHD: "75% strike on 2c MAP STAMP, only 7 recorded on Map stamps"	AHD-1023
	-/JA 2/99	N		PC
	-/JA (8?)/99	Y	full strike shows 'WINONA/ONT.' on dirty blue oceans Map stamp	PC

Hammer	Strike Date	Image	Description & Comments	Reference
	-/MR 2/99	Y	partial strike shows 'WINONA/O...' on pale blue oceans Map stamp	PC
	-/MR 13/99	Y	weak partial strike shows '...ONA/O...' on lavender oceans Map stamp	PC
	-/JU 8/99	Y2	SON strike shows 'WINONA/ONT.' on dark lavender oceans Map stamp	1. ABC88-648 2. PC
	-/JU 22/99	Y	partial strike shows 'WINONA/...'	AJAHDE83-755
	-/NO 10/99	N		PC
Woodstock	-/?? 21/99	Y1	ARW: "80% SON light strike on #86. RF 20, 6 recorded strikes on map"	1. NP 2. ANP-560 3. AJAHDE83-757 4. ARW-595
	nude	N		HB-184
	-/FE 19/99	N		PC
Woodville (See Note (19))	-/?? 2/??	Y	weak SON strike shows 'WOODVILLE/ONT.' on pale blue oceans Map stamp	WS1847-43
	-/JA 3/99	Y2,3,4	<ul style="list-style-type: none"> weak strike shows '(WOO)DVILLE/ONT.' on pale blue oceans Map stamp (WOO letters are partial) Map stamp is a Major Re-entry at position 2-A-17 RA: "the Woods collection dispersed by Eastern has a Map strike clearly dated -/JA 3/99" 	1. AMW-370 2. RA110-1 3. SC 4. PC
Manitoba Type 2				
Gretna	-/MR 27/99	N	same stamp as below?	EB
	-/MR 2?/-	Y1,4		1. NP 2. ANP-589 3. ABC85-741 4. PC
	-/AP 22/99	N	3 different stamps on AP 22	PC
	-/AP 22/99	N	3 different stamps on AP 22	PC
	-/AP 22/99	N	3 different stamps on AP 22	PC
	-/AP 29/99	N		PC
	-/MY 16/99	Y3	<ul style="list-style-type: none"> different than the stamp below ARW: "60% strike on #85, shows 'G...NA, MAN'. RF 45, 7 recorded map stamp strikes. Ex Pelletier" 	1. AJAHDE83-765 2. ARW-603 3. PC
	-/MY 16/99	Y	different than the stamp above	1. EB 2. PC
McGregor Station	???	N		AWB-260
	???	N	ARB: "two examples; rare as only four examples reported"	ARB-431
	-/JA 6/9-	Y	partial strike shows '...R STATION/...N' on pale blue oceans Map stamp	PC
	-/JA 7/99	Y1,2	<ul style="list-style-type: none"> partial strike shows 'McGREGOR STATIO...' on pale blue oceans Map stamp ARB: "two examples; rare as only four examples reported" 	1. ARB-431 2. PC
	-/JA 10/99	Y1,4	<ul style="list-style-type: none"> almost SON strike shows 'McGREGOR STATION/MAN' ARW: "SON strike on #86. RF 30, only 4 recorded map stamp strikes. Ex Pelletier" 	1. NP 2. ANP-589 3. AJAHDE83-768 4. ARW-606
	-/JA 12/??	N	not the same stamp as below	PC
	-/JA 12/99	Y	partial strike shows 'McG...ION/MAN' on pale blue oceans Map stamp	PC
	-/JA 13/99	Y	blurry, doubled strike shows 'McGREGOR STATIO.../M...' on a pale blue oceans Map stamp	PC
Morden	???	N		ANP-589
	-/JA 25/99	Y	partial strike shows 'MOR...MAN' on dark blue oceans Map stamp	PC
	-/JA 30/99	N		PC
	-/OC ??/??	N	not the stamp below	PC

Hammer	Strike Date	Image	Description & Comments	Reference
	-/OC 9/99	Y2	<ul style="list-style-type: none"> AHD: "It. 60% strike on 2¢ MAP STAMP, shows '..ORDEN/MAN'. RF 20, only 4 recorded strikes on Map stamps" lavender oceans Map stamp 	1. AHD-1042 2. PC
	-/DE 29/99	Y1	ARW: "40% partial strike on #86, shows most of 'MORDEN' only. RF 20, only 4 recorded map stamp strikes"	1. AJAHDE83-769 2. ARW-608
	-/DE 30/99	N		PC
	-/SP 7/00	Y	80% strike showing '..ORDEN/MAN'	ASA28-348
Pipestone	-/-A 11/99	Y1,2,4 5,6	<ul style="list-style-type: none"> bold partial strike shows '...STONE/...' on dirty greenish blue oceans Map stamp ARL: "30% strike on 2¢ MAP STAMP. Shows '...STONE/...' Very rare on map stamp, only 2 reported strikes" ABM: "25% strike on 2¢ MAP, shows '...STONE/...' RF 60. RARE ON MAP STAMP WITH ONLY 2 RECORDED STRIKES!" RA reports that this stamp came from the Woods collection (see Eastern Auctions June 2006 auction) and was probably in Nels Pelletier's collection 	1. ARL41-1008 2. ABM-1102 3. AMW-370 4. RA110-2 5. SC 6. PC
Selkirk	???	N		AWB-260
	AM/JA 3/??	Y1	<ul style="list-style-type: none"> partial light strike shows 'SELKIRK/...' ANP: "VG strike, full town, 3 strikes known" ARW: "60% light strike on #86, 'MAN' off stamp. RF 25, only 2 recorded map stamp strikes. Ex Pelletier" 	1. ANP-593 2. AJAHDE83-772 3. ARW-610
	AM/JA 12/99	Y1	strike shows 'SELKIRK/MAN'	1. ARL10-119 2. PC
	AM/FE 8/99	Y	<ul style="list-style-type: none"> 9-bar circular grid cancels Map stamp on piece full Squared Circle strike is tied to pale blue oceans Map stamp 	ARB-436
Souris	-/DE 2?/9?	Y1,2	<ul style="list-style-type: none"> partial strike shows 'SOURIS/MA...' second digit of day and year not clear – could be 1898 or 1899 ANP: "full town, VG strike, 3 known, VG" AMR: "a fine strike, the only strike known on a Map single (2 known on cover)" 	1. ANP-594 2. AMR-1264
	-/OC 2/99	N		PC
	-/NO 10/99	Y1,3	<ul style="list-style-type: none"> partial strike shows 'SOURIS/...AN' on a grey oceans Map stamp AJS: "Clean strike on toned 2¢ grey dated NO 10 '99. Extremely Rare, one of 3 known (the other 2 on cover)" 	1. AJS-502 2. DL55-1118 3. PC
	-/AP 7/00	Y	SON strike shows 'SOURIS/MAN' on grey blue oceans Map stamp	PC
Assiniboia Type 2				
Estevan	???	N	<ul style="list-style-type: none"> journal: "A partial strike on a map stamp "ESTE"; first reported strike on a Map stamp", with no further details since strike below has "ESTEV" and "M" of month clearly visible, are likely different stamps 	RA47-360
	-/M- --/--	Y	partial strike shows 'ESTEV...' on lavender oceans Map stamp	PC
Grenfell	???	N		AWB-260
	-/FE 2/??	Y4	<ul style="list-style-type: none"> weak partial strike shows 'GRENFELL...' on lavender oceans Map stamp AJAH: "this is the unique example on Map found in 1979 (H-1)" ARW: "60% light strike on #85, 'ASSA' is off stamp. RF 35, this is the UNIQUE strike on map stamp" ARB: "Includes the ONLY REPORTED STRIKE of Grenfell on the Map issue (not reported on cover)" 	1. AJAHDE83-774 2. ARW-612 3. HB-199 4. ARB-428
	-/AP 2/99	Y	bold strike shows 'GRENFELL/ASSA.' on dark blue oceans Map stamp	PC
	-/DE 5/99	Y	weak SON strike shows 'GRENFELL/ASSA.' on grey oceans Map stamp	PC
	-/DE 16/99	N	journal: "New latest reported date on 2 Cent Map, second reported example on a Map stamp"	RA120-1
Maple Creek	???	N		AWB-260
	-/JA 1/99	Y	almost SON strike shows 'MAPLE CRE(EK)/ASSA' on grey blue oceans Map stamp (EK letters are partial)	PC

Hammer	Strike Date	Image	Description & Comments	Reference
	-/JA 3/99	Y	<ul style="list-style-type: none"> partial strike shows 'MA...EEK/ASSA.' on pale blue oceans Map stamp ARB: "only two reported; plus one on cover" 	1. NP 2. ANP-595 3. ARB-428
	-/MR 21/99	Y1,2	almost SON strike shows 'MAPLE CREEK/ASSA' on greyish-blue oceans Map stamp	1. EB-2018 2. PC
	-/DE 20/99	Y1,2	<ul style="list-style-type: none"> AJAH: "Maple Creek on stamp, DE 20'99 (H-2)" ARW: "DE 22/99 75% strike on #85, shows '..PLE CREEK, ASSA', date is questionable. RF 25, only 2 recorded map stamp strikes" the illustrations in both auction listings reveal that they are the same stamp, and it is likely the same stamp as reported in <i>Maple Leaves</i> as DE 20/99 however, the date is questionable and the year could be 1898 latest reported date of use on any stamp if the year is 1899 	1. AJAHDE83-775 2. ARW-613 3. ML206-40
Wolseley, Hammer 2	-/?? ?/?/??	N		PC
	-/DE 31/98	Y1,3	<ul style="list-style-type: none"> partial strike shows 'WOLSELEY/...' on lavender oceans Map stamp year is a bit difficult to read 	1. NP 2. ANP-595 3. ARB-436
	-/JA -/--	Y	<ul style="list-style-type: none"> partial strike shows 'WOLSELE...' on deep blue oceans Map stamp AJT: "2¢ Map showing top portion of "Wolseley"JA" (99) squared circle cancel. Scarce cancel on maps. Stamp has small fault. F app" 	1. AJT28/30-427 2. PC
	-/JA 31/99	N	ARW: "75% very light strike on #86, Hammer II. RF 40, 5 recorded"	ARW-614
	-/FE 4/99	Y2	<ul style="list-style-type: none"> partial strike shows 'WOL...ASSA.' on blue oceans Map stamp ARL: "smudgy weak 60% strike on 2¢ MAP STAMP #86. Shows 'WOL.../ASSA'. Thin & few nibbed perms. RF 40, inv. 5 only on Map stamp" 	1. ARL42-1559 2. PC
	-/FE 21/99	N		ARL103-3670
	-/J(U?) 2?/99	Y	SON strike shows 'WOLSELEY/ASSA.' on blue oceans Map stamp	PC
Saskatchewan Type 2				
Prince Albert	-/JA 4/99	Y1,2	<ul style="list-style-type: none"> partial strike shows '...ALBERT/SASK.' on pale blue oceans Map stamp first 1899 report 	1. RA96-2 2. PC 3. RA136
Alberta Type 2				
Innisfail	???	N	2 strikes	AWB-259
	???	N		ARB-427
	-/JA 10/99	N		1. ABC85-735 2. PC
	-/JA 21/99	Y	partial strike shows 'INN...AIL/ALTA.' on bright blue oceans Map stamp	PC
	-/JA 26/99	N	80% strike	1. ARL92-2602 2. HB-204
	-/JA 30/99	Y	very weak strike shows 'INNISFAIL/ALT...' on bright blue oceans Map stamp	PC
	-/JA 31/99	Y1,3	<ul style="list-style-type: none"> AHD: "50% strike on 2¢ MAP STAMP, shows 'INNISF.../ALT.'. RF 35, rare on Maps, only 3 recorded strikes!" deep blue oceans Map stamp 	1. AHD-1076 2. HB-204 3. PC
	-/SP 15/99	N	possible that SP 15/16 strikes are the same strike with 2 different owners reporting different days	HB-204
	-/SP 16/99	N	<ul style="list-style-type: none"> ARW: "50% strike on #85 shows 'INNIS...,ALTA', minor stamp stain. RF 35, only 3 recorded map stamp strikes" possible that SP 15/16 strikes are the same strike with 2 different owners reporting different days 	1. AJAHDE83-799 2. ARW-616 3. HB-204
	-/DE 9/99	Y2	partial strike shows '(INNI)SFAIL/ALTA.' on a lavender oceans Map stamp	1. HB-204 2. PC
	-/DE 29/99	N		1. HB-204 2. PC

Hammer	Strike Date	Image	Description & Comments	Reference
	-/JA 29/00	Y1,3	partial strike shows 'INN...IL/ALTA.' on a lavender oceans Map stamp	1. NP 2. ANP-597 3. PC
	-/MY 1/00	Y1,2,3	messy strike shows '...ISFAIL/ALTA.' on grey oceans Map stamp	1. ARB-427 2. EB 3. PC
RPOs Type 2				
Que. & Camp. M.C. Local, No. 5, Hammer 1	E/JA 23/99	N		AJAHDE83-788
	E/FE 20/99	N		PC
	W/M? ?/99	Y	<ul style="list-style-type: none"> • weak strike shows 'QUE....AL/No 5' on deep blue oceans Map stamp • illegible indicia but "No 5" is clear 	EB
	E/MY 3/99	N	ARW: "60% light strike on #86, No. 5 just barely on the stamp. RF 40, only 3 recorded map stamp strikes"	1. ARW-627 2. PC
	W/MY 20/99	N		PC
	W/OC 4/99	Y	SON strike on lavender oceans Map stamp	PC
	W/NO 17/99	N	ARW: "SON but light strike on #85. RF 40, 3 strikes"	1. AJAHDE83-789 2. ARW-628 3. PC
	W/DE 28/99	N		PC
	E/JA 4/0	Y	<ul style="list-style-type: none"> • partial strike shows 'QUE & CA...OCAL/No5' on baby blue oceans Map stamp • year error: single digit 0, presumably for 00 	PC
Souris & Winnipeg M.C., No. 1	EAST/AP 16/99	N	the only reported date of hammer use in 1899	1. HB-223 2. RA136

Notes:

- (1) **Mansonville:** Handbook #5 reports 2 off-cover Map stamp strikes. The latest reported date of use in Handbook #5 on any stamp is -/MR 6/99. It is probable that this report is based on the listings in (1) the J.A. Hennok December 1983 auction, Lot #603, (2) the Robert A. Lee 1984 auction of the Ron Winmill collection, Lot #454, (3) the J.A. Hennok 1995 auction of the Whit Bradley collection, Lot #235, and (4) the Eastern Auctions 2009 auction of the Roger Boisclair collection, Lot #434, all of which claim a Mansonville strike on the Map stamp. These auction listings mis-assigned the hammer name and the strike is actually a Shannonville, QUE strike on a Map stamp (see *Roundup Annex*, Vol 36, #1/122, pg 4 (2015)). Therefore, it is likely that there is a single Mansonville, QUE Squared Circle strike on Map Stamp - the current owner is unknown and no strike details have appeared in the philatelic literature.
- (2) **Antigonishe:** Handbook #5 reports 7 off-cover Map stamp strikes. No Antigonishe Squared Circle strike on a Map stamp has been reported in the philatelic literature other than in Handbook #5.
- (3) **Canso:** A single off-cover Map stamp strike is reported in the text of Handbook #5 (pg II-22) while 2 Map stamp strikes are reported in the Handbook Appendix (Appendix A-1). Winmill reports in *Maple Leaves* (Vol 20, #2, Whole #206, pg 38 (1986)) that "Two strikes are known on map stamp and a further example on cover was sold by Wm. Maresch some years ago. Two map covers are also recorded." A Canso strike was also reported in *BNA Topics*, Vol 29, #9, Whole #316, pg 238 (1972) ("Dave Handelmann reports the first example of CANSO on Map stamp. I have been puzzled by the fact that this town did not show up on Map stamp during the 1970 roster, when the last known date for CANSO is nearly six months later than the issue date of the Map stamp.") and in the J.A. Hennok December 1983 auction, Lot #613 ("Canso on stamp, ?'99 rare Ex Handleman (H-1)"), but neither of these list a strike date so they are possibly one of the stamps in the list.
- (4) **Yarmouth:** The hammer (AM/PM TM with occasional blanks) was used for ~2 months during the Map stamp period to AM/JA 27/99, the latest reported date of use. Normally the day follows the month in the date arrangement but in DE 98, several dates show a reversed arrangement, including the unique Map stamp example.
- (5) **Granby:** Handbook #5 reports 2 off-cover Map stamp strikes. No Granby Squared Circle strike on a Map stamp has been reported in the philatelic literature other than in Handbook #5.
- (6) **St. Gregoire:** From 1896-1900, the year appears in the top slot and blank time marks reside in the bottom slot (YY/MM DD/-). The Handbook #5 (Appendix A-3) population number of 2 possibly does not include a St. Gregoire strike that was

originally incorrectly assigned as a Lotbiniere strike (only 'RE' visible, date and year not visible, Lotbiniere penciled-in on stamp back), reported in the *Roundup Annex*, Vol 36, #2, Whole #123, pg 1 (2015).

- (7) **Athens:** The hammer was used during the Map stamp period for ~1 month to the latest reported date of use AM/JA 7/99. Handbook #5 reports 1 off-cover Map stamp strike. No Athens Squared Circle strike on a Map stamp has been reported in the philatelic literature other than in Handbook #5.
- (8) **Aylmer West:** Handbook #5 reports 2 off-cover Map stamp strikes. No Aylmer West Squared Circle strike on Map stamp has been reported in the philatelic literature other than in Handbook #5.
- (9) **Brantford:** The hammer saw interrupted use during the Map stamp period and, for the most part, was rarely used after JU 20/98. Only 1 strike was reported in each of 1899 (?/OC 4/99) and 1900 (-/SP 10/00), neither on Map stamp. This is a unique situation in which no strikes were reported in either Handbook #5 or the Census. However, philatelic literature vaguely suggests that Brantford Map stamp strikes exist but no details are provided. *The Evolution of Imperial Penny Postage and the Postal History of the Canadian 1898 Map Stamp*, pg 24 (1982) reports that "only one example is recorded on Map stamp, though there are also 2 covers reported". *Maple Leaves*, Vol 20, #2, Whole #206, pg 38 (1986) suggests that Brantford strikes on Map stamps are known on- and off-cover. However, no details are given and in the absence of specific strike information the hammer is not included in the population report.
- (10) **Glamis:** Starting in JY/1/98, a 3-line date MM/DD/YY was used. However, all off-cover Map strikes show the normal 2-line date arrangement.
- (11) **Glencoe:** Dated use of the hammer ended on -/FE 9/98 and all strikes on 1¢ & 2¢ Numerals and the Map stamp lack indicia (no strikes reported on Leaf or 3¢ Numeral issues) (*BNA Topics*, Vol 34, #5, Whole #361, pg 32 (1977) and *Maple Leaves*, Vol 17, #8, Whole #174, pg 144 (1979)).
- (12) **Kincardine:** No strikes are reported in 1898, and the single Map stamp strike in 1899 on -/AP 06/99 is the latest reported date of use on any stamp. It is probable that the -/OC 6/99 latest date of use reported in Handbook #5 (pg II-114) is incorrect since the Handbook ascribes it to the Map stamp, but this date is based on early erroneous reports in the *Roundup Annex* and *Maple Leaves*.
- (13) **London:** Although the latest reported date of use in Period 1 is 17/FE 16/00, 1899 strikes are generally scarce. Nels Pelletier, when reporting his find of the off-cover 24/FE 3/00 strike in *BNA Topics*, Vol 36, #4, Whole #372, pg 31 (1979), stated that "The London hammer had not been known during the map period, except for about a week in 1900". Based on a Map stamp cover report in the *Roundup Annex* in 1998 (dated PM/JA 10/99), and the new strikes reported since Pelletier's article, this statement needs revision to: The London hammer was in use during the Map period in early January 1899 and for about 10 days in early February 1900.
- (14) **Nassagaweya:** In AHD-618, the auction listing for Volume 6 - ONTARIO 'G-O' reads "NASSAGAWEYA (3 stamps 1 on Map)" but no further information is given and no scan was provided (the auction catalogue listing is saved as a scan). The latest reported date of use of the hammer in Handbook #5 is -/MR 31/96. It seems unlikely that an isolated strike in late 1898 or 1899 on a Map stamp is possible. The hammer is not included in the population report.
- (15) **Owen Sound:** Handbook #5 reports 5 off-cover Map stamp strikes. No Owen Sound Squared Circle strike on a Map stamp has been reported in the philatelic literature other than in Handbook #5.
- (16) **Tilsonburg:** Handbook #5 reports that strikes become scarce after PM/DE 7/98 and then resume regularly again in 1900 between MY 14 and JU 7. Handbook #5 reports 6 off-cover Map stamp strikes but none have been documented in the philatelic literature other than the Handbook #5 report. Possibly incorrectly identified Wallaceburg strikes?
- (17) **Waterloo:** No strikes are reported in 1898 or 1900 and, assuming the nude strikes reported on Map stamps are from 1899, only these examples are reported in 1899. 3 Collectors have reported a nude off-cover Waterloo Map stamp strike in the current Census, and it is unknown whether any of the stamps listed in the auctions from 1989 to 1995 are one of these 3 stamps.
- (18) **Weston:** Handbook #5 reports 1 off-cover Map stamp strike. No Weston Squared Circle strike on an off-cover Map stamp has been reported in the philatelic literature other than in Handbook #5.
- (19) **Woodville:** No strikes are reported on any stamp from the end of Period 1 (-/AP 13/95) to the beginning of Period 2 (-/JA 7/01) other than the Map stamp strikes. There is a statement in Handbook #5 (pg II-185) attributed to Ron Winmill that "a previous report (of this town) on 2¢ Map was incorrect". In *Maple Leaves*, Vol 20, #2, Whole #206, pg 40 (1986), Winmill states "This strike was erroneously recorded on map stamp by the late Nels Pelletier who misidentified a Wooler. Because of this, no 1899 date is known either." The two strikes in the census correct these statements.

3.3 Hammers with >10 Strikes - Stamps/Strikes of Special Interest

Hammer	Strike Date	Scan	Description & Comments	Reference
Type 1				
Brockville	<u>DE/PM 19/98</u>	N	switched TM and month as written up in Handbook #5 pg II-4	ML174-144
	<u>MR/PM 14/99</u>	Y	switched TM and month as written up in Handbook #5 pg II-4	PC
	<u>PM/JU 28/99</u>	Y2	on a horizontal pair	1. ABC86-495 2. PC
	<u>??/NO --/99</u>	Y	also has "RETURNED FOR BETTER DIRECTION" postmark	PC
Dutton	<u>PM/SP 25/99</u>	N	only reported PM time mark and first PM report on any stamp	ASA28-1217
Grimsby	<u>AM & PM/FE 23/99</u>	N	<ul style="list-style-type: none"> date matched AM/PM pair ARW: "lot of two #85's, each w/same date, one AM, one PM. A lovely matched pair. RF 15" 	ARW-453
London, East	<u>-/OC ??/97</u>	N	year error for '99' on 2 examples	RA85-1
Mount Forest	<u>-/JA 4/99</u>	N	block of 4	PC
Nova Scotia Type 2				
Halifax, Hammer 2	<u>1-4/JA 25/99</u>	Y	<ul style="list-style-type: none"> matched set of TM 1-4 on same day AJH: "matched set of four 2c Maps cancelled JA25/99with time marks 1-2-3-4, F-VF." 	AJH-2017
	<u>1-4/JA 27/99</u>	Y	<ul style="list-style-type: none"> matched set of TM 1-4 on same day note that TM 4 exists on a cover 	PC
	<u>1-4/JA 31/99</u>	Y	matched set of TM 1-4 on same day	PC
	<u>1-4/FE 1/99</u>	Y1,3	<ul style="list-style-type: none"> matched set of TM 1-4 on same day ANP: "4 stamps indicia 1-4 (all psmkd. Fe 1'99)" note that the TM1 & TM2 stamps from NP are different than those in the Squared Circles of Canada website but TM3 & TM4 are the same 	1. NP 2. ANP-547 3. SQ
	<u>1-4/FE 1/99</u>	Y	<ul style="list-style-type: none"> matched set of TM 1-4 on same day different than the Pelletier set above 	PC
	<u>1-4/FE 2/99</u>	Y	<ul style="list-style-type: none"> matched set of TM 1-4 on same day note that TM2 exists on a cover, and TM3 exists both on- and off-cover different than the FE 2 set below 	PC
	<u>1-4/FE 2/99</u>	Y	<ul style="list-style-type: none"> matched set of TM 1-4 on same day different than the FE 2 set above 	PC
	<u>1-4/FE 3/99</u>	Y	matched set of TM 1-4 on same day	PC
	<u>-/FE 4/99</u>	Y	<ul style="list-style-type: none"> rare blank time mark (Handbook #5 reports 0.4% of all TM) different than the stamp below 	PC
	<u>-/FE 4/99</u>	Y2	<ul style="list-style-type: none"> rare blank time mark (Handbook #5 reports 0.4% of all TM) different than the stamp above 	1. ARL84-1750 2. PC
	<u>4/FE 7/99</u>	Y1,2,3	<ul style="list-style-type: none"> AMA: "2c blue Map, jumbo margins, with OFFICIAL opt (done by Henry Hechler who lived in Halifax), with 7 FE '99 Squared Circle cancel, some perf faults, age stains, scarce" AHW: "Noted unusual Hechler "OFFICIAL" handstamped with Halifax squared circle." 	1. AMA2006-2471 2. AHW-276 3. AAN1094-35
North Sydney	<u>-/JA 9/98</u>	Y2,3	<ul style="list-style-type: none"> year error 98 for 99 ARW: "lovely SON YEAR DATE ERROR on #86" 	1. BT194-220 2. RA4-49 3. ARW-466
	<u>-/JA 9/98</u>	Y	year error 98 for 99	CAP226-202
	<u>-/JA 11/98</u>	N	<ul style="list-style-type: none"> year error 98 for 99 ANT: "bit weak 90% strike on 2c MAP stamp, impossible date, see Handbook comments re date error. 45 reported strikes on Maps. RF 25" 	ANT-663
	<u>-/JA 13/98</u>	N	year error 98 for 99	RW-31
	<u>-/MR 2/99</u>	N	inverted 'MR 2'	ARL63-1563
	<u>-/JY 23/99</u>	Y	upside down 99	ASA28-348
Port Maitland	<u>-/JA 30/98</u>	N	year error 98 for 99	PC

Hammer	Strike Date	Scan	Description & Comments	Reference
	-/FE 4/98	N	year error 98 for 99	PC
	-/FE 7/98	Y6	<ul style="list-style-type: none"> RA119 states this stamp is ex Pelletier, Bradley year error 98 for 99 SON strike shows 'PORT MAITLAND/N.S.' on deep blue oceans Map stamp 	1. ML199-188 2. RA43-338 3. RA47-360 4. RA119-2 5. HB 6. PC
Truro	AM & PM/NO 17/99	N	matched set of TM 1 on same day	PC
	AM & PM/JA 4/100	N	matched set of TM 1 on same day	AJAHDE83-629
Quebec Type 2				
Montreal, Hammer 1	5/JA 23/9	Y1,4	single digit 9 in year	1. RA43-338 2. RA45-348 3. HB-64 4. PC
	2 & 6/MR 31/99	Y	date matched TM pair	PC
Ste. Cunegonde	AM/AP 5/99	Y	only reported AM TM	PC
Ontario Type 2				
Cornwall	-(P)A 4/99	Y	month reversed and P rotated 180°	1. ABC89-602 2. PC
Goderich	-/JA 3/9	Y	first date of single digit year for 99	AAN1126-36
	-/JA 20/99	N	inverted 2	ML174-144
	-/JA (2)0/99	N	missing 2	RW-35
Huntsville	AM/MR 24/99	Y	only reported AM TM	NP
Leamington	-/JA 21/39	Y1	inverted 3 in year 39 for 99	1. NP 2. ML206-38
	-/FE 8/99	Y1,2,3	3 pre-printing creases and folds in the stamp	1. ABC86-502 2. MS25-1 3. ASA28-327
Lindsay	AM/JY 25/9	Y	single digit year for 99	PC
Paris	A & C/JA 6/99	Y	date matched TM pair	PC
	A & D/JA 9/99	Y	date matched TM pair	PC
Picton	2/JA 3/99	Y	first day that first 9 in 99 appears as an inverted 5	PC
	1/AP 21/-9 & 2/AP 21/99	Y	date matched TM	PC
	AM/JA 5/--	Y	only reported AM TM in 1900	PC
	PM/MR 2/00	Y	only reported PM TM in 1900	PC
Ripley	AM/FE 09/99	Y	zero spacer in day	PC
	PM/FE 09/99	Y	zero spacer in day	ARL42-1538
	AM/JA 03/00	N	zero spacer in day	RA118-1
St. Thomas	AM & PM/MR 17/99	N	date matched TM pair	PC
	AM & PM/JU 5/99	N	date matched TM pair	PC
	AM & PM/JU 12/99	N	date matched TM pair	PC
	AM & PM/JU 16/99	N	date matched TM pair	ARL63-1680
Sarnia	-/DE 28/--	Y2,3	<ul style="list-style-type: none"> purple ink strike this strike is clearly a fake/forgery, reported in ref (2) 	1. RA110-1 2. RA126-2 3. PC

Hammer	Strike Date	Scan	Description & Comments	Reference
Smiths Falls	-/JA 3/0	Y	single digit year	PC
Tavistock	-/JA 24/99	N	3 strikes on a vertical strip of 3	1. DL86-1198 2. PC
	-/DE 25/99	Y1,2	<ul style="list-style-type: none"> blue ink strike shows "TAVIST..." different than stamp below 	1. NP 2. PC
	-/DE 25/99	Y3	<ul style="list-style-type: none"> blue ink strike AJAH: "IN BLUE. NO BLUE STRIKES ON MAP RECORDED" ARW: "40% strike in BLUE INK on #86. Shows only "...OCK, ONT" FF: "the only blue squared circle" different than stamp above 	1. AJAHDE83-732 2. ARW-571 3. FF-48 4. JHE 5. AJH-2247
Toronto	5PM/AP 18/66	Y	inverted 99	ARL67-1275
	?PM/AP 24/66	N	<ul style="list-style-type: none"> inverted 99 ARW: "nice SON strike on #86 with the INVERTED '99' ERROR" 	ARW-576
	1PM/AP 24/66	N	inverted 99	PC
	9PM/JY 2-/99	Y	rare 9PM TM	PC
Queen St. East, Toronto	PM/DE 19/99	Y1,2	only reported PM TM and first report on any stamp	1. RA97-1 2. PC
York Street	3:30/FE 2/98	Y	year error '98' for '99'	RA49-376
	12NOON/JU 21/99	Y1	12NOON inverted	1. RA43-338 2. AWB-258
	6:30 & 9:45/OC 18/99	Y	<ul style="list-style-type: none"> date matched TM 6:30 TM on piece 	PC
	7/FE 22/00	Y	rare 7 TM	ATK-3543
Whitby	-/NO 01/--	Y	zero spacer in day	PC
	-/NO 03/99	N	zero spacer in day	ABC85-743
	-/NO 03/99	N	<ul style="list-style-type: none"> zero spacer in day same stamp as above? 	ARL8-75
	-/NO 08/99	Y	<ul style="list-style-type: none"> zero spacer in day different stamp than below 	RA97-1
	-/NO 08/99	Y	<ul style="list-style-type: none"> zero spacer in day different stamp than above 	PC
Wingham, State 2	-/NO 8/9	Y	single digit year for 99	EB
Wooler	-/FE 15/99	Y	<ul style="list-style-type: none"> inverted 5 in day shows 'WOOLE.../ONT' 	RA43-338
Manitoba Type 2				
Brandon	-/1 CQ/99	N	month/day line inverted	HB-186
	-/OC 1/00	N	year should be 99	RW-42
	-/NO 27/9	Y	single digit year for 99	PC
Deloraine	-/JA 8/99	N	<ul style="list-style-type: none"> could be "AM" time mark? ARW: "looks like 'AM' fair SON strike on #85. RF 25, 13 strikes" 	ARW-600
	-/FE 11/99	N	LRD on any stamp for use of blank TM	PC
	PM/MR 23/99	Y	<ul style="list-style-type: none"> blank until -/FE 11/99 and then AM/PM until the end of hammer use only reported PM TM off-cover and no AM TM reported free strike on piece and 8-bar circular grid cancels Map stamp 	PC
BC Type 2				
Nanaimo, State 2	AM/FE 1/99	Y2	complete line "FE 1" is rotated 180°	1. ABC66-887 2. PC
	AM/MR 1/99	Y1,2	<ul style="list-style-type: none"> complete line "MR 1" is rotated 180° AHD: "nice SON strike on 2¢ MAP STAMP, note inverted 'MR'. Indicia errors are rare for this town!" different stamp than 2 below 	1. RA68-458 2. AHD-1092 3. ARL80-1959 4. PC

Hammer	Strike Date	Scan	Description & Comments	Reference
	AM/MR 1/99	Y	<ul style="list-style-type: none"> complete line "MR 1" is rotated 180° different stamp than above or below 	1. ABC66-887 2. PC
	AM/MR 1/99	Y	<ul style="list-style-type: none"> complete line "MR 1" is rotated 180° different stamp than 2 above 	EB
	AM/MR 23/?6	Y	<ul style="list-style-type: none"> year could be 96 or 66, in either case, upside-down 9 for year 99 year could be 06 for 1906 	PC
	-/JU 30/99	Y1,2	only reported blank TM on any stamp	1. ATK-3709 2. RA127-1
Victoria, Hammer 3	AM/JA 16/99, PM/JA 16/99, NT/JA 16/99	Y2,3	date matched TM set of 3	1. AWB-264 2. ATK-3727 3. PC
	AM/JA 31/99, PM/JA 31/99, NT/JA 31/99	N	date matched TM set of 3	AWB-264
RPO's Type 2				
Napinka & Winnipeg M.C., No. 2	ISEW/?? ??/ ??	N	inverted WEST	RA113-1
	EAST/_ 1/99	Y	<ul style="list-style-type: none"> month missing bold SON strike on deep blue oceans Map stamp 	PC
	EAST/_ 19/99	N	month missing	RA108-2
Souris & Winnipeg M.C., No. 2	W/MR 24/99	Y	only reported W direction mark	PC
	EAST/OC 21/??	N	inverted 'C' in OC	AJT139/140-492

4. Basic Statistics of the Off-Cover Map Stamp Census

Some basic statistics regarding the off-cover Map stamp Census:

- 3461 off-cover Map stamps with Squared Circle cancellations are currently in the Census, 362 of which are from the 94 hammers having ≤ 10 strikes
- 265 of these 362 stamps have an associated image (72%)
- strikes from 7 hammers that were not reported on off-cover Map stamps in Handbook #5 have been discovered since its' publication (London (Type I), Farnham, Cache Bay, Wellington, Woodville, Pipestone, and Souris), bringing the number of hammers that are found as off-cover strikes from 196 (in Handbook #5) to 203⁵
- 7 of the hammers that were reported in Handbook #5 to have a single off-cover Squared Circle strike now have more than 1 example (Lunenburg, Whycocomagh, Summerside, Harriston, Orillia, Strathroy, Grenfell)
- 8 hammers that were reported in Handbook #5 to have at least 1 off-cover Map stamp strike do not have an example recorded in the Census (Mansonville, Antigonishe, Granby, Athens, Aylmer West, Owen Sound, Tillsonburg, Weston) - the current owners are unknown; I have been unable to document any reports in the philatelic literature before or since to confirm the Handbook #5 data and, if they are not residing in unreported collections, it is possible that strikes of these hammers on off-cover Map stamps were mis-identified and do not exist
- 16 hammers have a single reported off-cover Map stamp strike
 - no Map stamp covers have been documented for 9 of these hammers (London (Type 1), Mansonville, Yarmouth, St. Anne de Beaupre, Victoriaville, Athens, Kincardine, Prince Albert, Souris & Winnipeg M.C. No.1), and these unique stamps have been described in much more detail in an article in the *Roundup Annex*^{7,10}
 - one or more Map stamp cover has been documented for the 7 other hammers (Milltown, Alma, Niagara, Tara, Wellington, Weston, Pipestone)
- 27 hammers that had ≤ 10 strikes in Handbook #5 now have >10 strikes in the Census (Terrebonne, Baddeck, Lunenburg, Port Maitland, Sydney, St. John, Woodstock NB, Aylmer (East), Little Current, L'Orignal, Mount Brydges, Petrolea, Powassan, Ripley, Sudbury, Thamesford, Thornhill, Strachan Avenue, Vienna, Wooler, Birtle, Elkhorn, Kamloops, Sandon, Que & Camp No. 20, Napinka & Winnipeg No.1, Napinka & Winnipeg No.2)
- Earliest recorded usage off-cover: 4/DE 7/98 (Kingston, 2 examples)
- Latest recorded usage off-cover: -/JA ?/04 (Wolfville)¹¹

5. References and Endnotes

1. A census of Squared Circle postmarks on Map Stamp covers will be the subject of a separate publication which is in preparation.
2. Gordon, Jack (ed), *The Squared Circle Cancellations of Canada*, 5th Edition, The Squared Circle Study Group, BNAPS Handbook (2001)
3. I have visited the Harry Sutherland Philatelic Library at the Vincent Graves Greene Philatelic Research Foundation numerous times to study their extensive collection of auction catalogues, books and journals. Although many recent auction catalogues can be accessed online, this reference library of older material has been invaluable as a research tool, and the librarians (Kathy Hartley and Willow Moonbeam) have been exceptionally helpful in my searches.
4. A word about rarity factors (RF). The use of RF values for Squared Circle postmarks was introduced in 1954 by Whitehead in the 1st edition of the BNAPS Squared Circle Handbook, *The Squared Circle Postmarks of Canada*.⁸ The RF value is often quoted by dealers/auction lotters when advertising Squared Circle canceled Map stamps and covers but it is meaningless in this context since the RF value reflects the overall scarcity of the hammer strike and is not applicable to the scarcity of the hammer on Map stamps specifically. The non-applicability of the RF value to specific stamp issues is covered in much more detail by Tony Shaman in a 1986 *BNA Topics* article.⁹
5. There are an additional 9 hammers that have a documented Squared Circle Map stamp cover but no accompanying off-cover examples (Beeton, St. Ann's, Rothesay, Charlottetown, Eastman, Waterloo/QUE, Marmora, Martintown, Merritton). A table can be found in **Appendix 6.3** which lists the hammers for which Map stamp strikes have not been reported but are theoretically possible.
6. *Roundup Annex*, Vol. 26, #2, Whole #109 (2005)
7. *Roundup Annex*, Vol. 40, #1, Whole #136 (2019)
8. Whitehead, Alfred, *The Squared Circle Postmarks of Canada*, 1st Edition, BNAPS Handbook (1954)
9. Shaman, Tony, "The "Lonely Greats" Aren't So Lonely", in *BNA Topics*, Vol. 43, #5, Whole #415, pg 18 (1986)
10. Note that at the time of writing the Annex article, Farnham, Cache Bay and Wellington were thought to be unique strikes, and Windsor was presumed to exist.
11. 2 stamps documented with 1901 strikes, 4 stamps with 1902 strikes, and none in 1903

6. Appendices

6.1. Population Report of Off-Cover Map Stamp Cancellations (1)

	Hammer	Handbook #5	Census (2)
Type 1			
1	Aldergrove, BC	3	2
2	Beaverton, ONT	24	26
3	Brockville, ONT	144	85
4	Cumberland, ONT	5	6
5	Dutton, ONT	27	21
6	Grimsby, ONT	33	25
7	London, ONT, State 2	0	1
8	London, East, ONT	43	39
9	Mansonville QUE	1	0
10	Mount Forest, ONT	41	30
11	New Germany, ONT	3	5
12	Ottawa, CANADA	24	23
13	Point St. Charles, QUE	2	1
14	Shannonville, ONT	10	9
15	Terrebonne, QUE	10	11
16	Three Rivers, QUE	59	36
17	Westville, NS	5	10
Type 2 Nova Scotia			
18	Annapolis	35	22
19	Antigonishe	7	1
20	Baddeck	7	19
21	Canso	2	4
22	Halifax, Hammer 2	838	206
23	Kentville	8	2
24	Lunenburg	1	13
25	Maccan	4	6
26	Newport Landing	7	5
27	Northport	11	4
28	North Sydney	45	29
29	Pictou	39	19
30	Port Maitland	8	11
31	Port Williams	14	13
32	Springhill	21	14
33	Stellarton	28	25
34	Sydney	8	17
35	Truro	106	75
36	Whycocomagh	1	3
37	Wolfville	4	4
38	Yarmouth, State 2	1	1
Type 2 New Brunswick			

	Hammer	Handbook #5	Census (2)
39	Baie Verte	4	6
40	Indiantown	5	5
41	Milltown	1	1
42	River Louison	2	3
43	Sackville	16	10
44	St. John, Hammer 3	8	26
45	Shediac	12	15
46	Woodstock	7	11
Type 2 Prince Edward Island			
47	Georgetown	5	4
48	Summerside	1	4
Type 2 Quebec			
49	Acton Vale	3	3
50	Aylmer (East)	8	13
51	Clarenceville	4	6
52	Farnham	0	2
53	Granby	2	0
54	Iberville	2	3
55	Laurentides	14	13
56	Lotbiniere	2	2
57	Magog	17	17
58	Melbourne	5	3
59	Montreal, Hammer 1	14	18
60	Quebec	33	24
61	Riviere du Loup Station	4	8
62	St. Anne de Beaupre	1	1
63	Ste. Cunegonde	36	27
64	St. Gregoire	2	7
65	St. Hyacinthe	50	45
66	Sherbrooke, Hammer 1	38	31
67	Victoriaville	1	1
Type 2 Ontario			
68	Acton, Hammer 2	3	3
69	Alma, State 2	1	1
70	Almonte	32	15
71	Arnprior	41	29
72	Athens	1	0
73	Aurora	2	4
74	Aylmer West	2	0
75	Belleville, Hammer 3	34	16
76	Bobcaygeon, State 2	9	6
77	Bracebridge	5	8
78	Cache Bay	0	2
79	Cheltenham	3	3

	Hammer	Handbook #5	Census (2)
80	Cobden	2	2
81	Cornwall	101	53
82	Dundas	37	20
83	Dunnville	24	12
84	Flesherton	17	15
85	Formosa, Hammer 2, State 2	10	10
86	Georgetown, ONT	31	28
87	Glamis	9	7
88	Glencoe	9	4
89	Goderich	54	29
90	Gore Bay	24	19
91	Gravenhurst	6	3
92	Harriston	1	2
93	Huntsville	21	29
94	Iroquois	38	19
95	Kincardine	1	1
96	Kingston, Hammer 2	6	2
97	Lakefield	22	17
98	Lanark	4	5
99	Leamington	44	27
100	Lindsay	93	51
101	Listowel	56	57
102	Little Current	9	19
103	London (Type 2)	2	8
104	L'Orignal	4	13
105	Lucknow	22	21
106	Manitowaning	4	6
107	Mattawa	7	8
108	Merrickville	30	35
109	Milton West	24	29
110	Mitchell	3	4
111	Mount Brydges	3	15
112	Niagara	1	1
113	Niagara Falls South	5	4
114	North Bay	52	24
115	Orillia	1	4
116	Owen Sound	5	0
117	Oxford Mills	3	7
118	Paisley	2	3
119	Paris	57	41
120	Perth	20	12
121	Petrolia	8	11
122	Picton	91	71
123	Port Arthur	39	21
124	Port Hope	69	31

	Hammer	Handbook #5	Census (2)
125	Powassan	4	11
126	Prescott	66	37
127	Ripley	9	13
128	Rockton	3	4
129	Rodney	3	2
130	Roseneath	3	5
131	St. Thomas	127	113
132	Sarnia	148	61
133	Sault Ste. Marie	6	6
134	Schreiber, State 2	7	10
135	Seely's Bay	16	15
136	Shakespeare	10	9
137	Smiths Falls	97	60
138	Stirling	7	8
139	Stouffville	4	1
140	Strathroy	1	2
141	Sudbury	10	11
142	Sutton West	11	6
143	Tara	1	1
144	Tavistock	14	13
145	Thamesford	10	17
146	Thornhill	4	12
147	Tillsonburg	6	0
148	Toronto	126	53
149	Bleeker St., Toronto	24	15
150	Queen St. East, Toronto	21	17
151	Spadina Ave., Toronto	16	14
152	Strachan Avenue, Toronto	8	14
153	York Street, Toronto	210	118
154	Vienna	8	11
155	Wallaceburg	18	14
156	Warkworth	20	15
157	Waterloo, ONT	3	3
158	Wellington	0	1
159	Weston	1	0
160	Whitby	30	18
161	Warton	3	4
162	Williamstown	3	1
163	Wingham, State 2	43	26
164	Winona	7	7
165	Woodstock, ONT	6	3
166	Woodville	0	2
167	Wooler	8	14
Type 2 Manitoba			
168	Birtle	10	15

	Hammer	Handbook #5	Census (2)
169	Brandon	198	73
170	Deloraine	13	14
171	Elkhorn	6	12
172	Gretna	7	7
173	Hartney	19	23
174	McGregor Station	4	6
175	Morden	4	7
176	Neepawa	49	26
177	Pipestone	0	1
178	St. Boniface	15	17
179	Selkirk	2	3
180	Souris	0	4
Type 2 Assiniboia			
181	Estevan	2	2
182	Grenfell	1	4
183	Maple Creek	2	4
184	Medicine Hat	23	21
185	Moose Jaw	33	12
186	Wolseley, Hammer 2	5	7
Type 2 Saskatchewan			
187	Prince Albert	1	1
Type 2 Alberta			
188	Calgary, Hammer 2	77	43
189	Edmonton	11	11
190	Innisfail	5	10
191	Lethbridge	11	15
192	Red Deer	15	17
Type 2 British Columbia			
193	Donald	12	13
194	Kamloops	8	23
195	Nanaimo, State 2	35	62
196	Sandon	9	14
197	Victoria, Hammer 3	241	106
Type 2 RPO's			
198	Que. & Camp. M.C. Local (No. 5)	3	9
199	Que. & Camp. M.C. Local (No. 20)	7	23
200	Napinka & Winnipeg M.C. (No. 1)	9	16
201	Napinka & Winnipeg M.C. (No. 2)	9	34
202	Souris & Winnipeg M.C. (No. 1)	1	1
203	Souris & Winnipeg M.C. (No. 2)	15	29

Notes: (1) Hammers highlighted in grey are itemized in Section 3.2.

(2) The number of stamps in the Census is reported. If the number of stamps in the Census is less than in Handbook #5, the larger number will be used in the new online 6th edition of the handbook *Squared Circle Postmarks of Canada* (now available on the BNAPS website).

6.2 Abbreviations for References

AAC	J.N. Sissons October 1988 auction #482 of the Alex Csucs collection, Lot #XX
AAN	All Nations Stamp & Coin Auction (AANXX-YY is Auction #XX, Lot #YY)
ABA	Brigham Auctions (ABAXX-YY is Brigham Auctions 20XX auction, Lot #YY)
ABC	Bow City Auction (ABC2016-XX is Bow City 2016 auction, Lot #XX, ABCXX-YY is auction #XX, Lot #YY)
ABM	Robert A. Lee September 1991 auction #64 of Bill Moffatt Collection, Lot #XX
ABV	R. Maresch & Son October 1998 auction #334 of the Beverlie Clark collection, Lot #XX
ACF	Charles G. Firby Public Auction (ACFMRXX-YY is March 19XX auction, Lot #YY)
AEA	Eastern Auctions (AEA20XX-YY is Eastern Auctions 20XX auction, Lot #YY)
AFF	Spinks Shreves Galleries November 2007 Sale #96 of the Fred Fawn Collection, Lot #XX
AHD	Robert A. Lee June & August 1988 auctions #49&50 of the Hansen/Davey Collection, Lot #XX
AHW	Eastern Auctions October 2011 auction of the Hugh Westgate Collection, Lot #XX
AJAH	J.A. Hennok Auctions (AJAHXX-YY is auction #XX, Lot #YY; AJAHDEXX-YY is December 19XX Lot #YY)
AJH	Matthew Bennett December 2005 auction of the Jim Hennok Collection, Lot #XX
AJS	Robert Laird November 1982 auction of the John Siverts Collection, Lot #XX
AJT	John H. Talman auction (AJTXX-YY is auction #XX, Lot #YY)
AL	Longley Auctions (ALXX-YY is Longley Auctions Sale #XX, Lot #YY)
AMA	R. Maresch & Son Auction (AMA20XX-YY is 20XX auction Lot #YY; AMAXX is Maresch 2007 Auction Lot #XX)
AMR	J.N. Sissons August 1985 auction #443 of the Max Rosenthal collection, Lot #XX
AMW	Eastern Auctions June 2006 auction of the Michael Woods Collection, Lot #XX
ANB1	Robert A Lee September 1989 auction #56 of the Norman Brassler Collection 1, Lot #XX
ANB2	Robert A Lee November 1989 auction #58 of the Norman Brassler Collection 2, Lot #XX
ANP	J.N. Sissons May 1982 auction #417 of the Nels Pelletier Collection, Lot #XX
ANT	Robert A. Lee November 1987 auction #46 of the Norman C. Tunna Collection, Lot #XX
ARB	Eastern Auctions October 2009 auction of Roger Boisclair collection, Lot #XX
ARL	Robert A. Lee Auction (ARLXX-YY is Robert A. Lee auction #XX, Lot #YY)
ARW	Robert A. Lee 1984 auction #32 of the Ron Winmill Collection, Lot #XX
ASA	Sparks Auctions (ASAXX-YY is Sparks auction #XX, Lot #YY)
ATK	Sparks Auctions February 2017 Sale #23 of Ted Kerzner collection, Lot #XX
AVA	Vance Auctions (AVAXX-YY is Vance Auctions auction #XX, Lot #YY)
AWB	J.A. Hennok September 1995 auction #103/4 of the Whit Bradley collection, Lot #XX
BT	<i>BNA Topics</i> Journal (BTXX-YY is Whole #XX, pg YY)
CAP	<i>Canadian Philatelist</i> (CAPXX-YY is Whole #XX, pg YY)
CP	Firby, Charles G. and Wilson, Victor L., "The Canadian Posted Letter Guide - The Classic Period, 1851-1902", Charles G. Firby-Publications, Waterford, MI (1996), pg XX
CPH	Arfken, George B. and Pawluk, William S., "A Canadian Postal History 1897-1911", BNAPS Handbook (2006), pg XX
CPS	Canadian Philatelic Society of Great Britain auction (CPS2015-XX is auction in 2015, Lot #XX)
CS	<i>Canadian Stamp News</i> (CSX-YY is Volume X, pg YY)
DL	Dick Lamb sale (DLXX-YY is Dick Lamb sale #XX, Lot #YY)
DS	Dealer stock
EB	eBay listing (EB-2019 is eBay 2019; EB if year not known)
EX	Conference/Exhibition Exhibit
FC	<i>BNAPS Fancy Cancel Study Group Newsletter</i> (FCXX-YY is newsletter #XX, pg YY)

FD	<i>First Days Journal</i> (FDXX-YY is Whole #XX, pg YY)
FF	Fawn, Fred G., "Imperial Penny Postage of 1898 – An Exhibit Prepared by Fred G. Fawn", BNAPS Exhibit Series: No. 32 (2004), pg XX
GN	Graham Noble Fall 1981 Private Treaty List No. 81-1, Lot #XX
HB	Gordon, J. (ed.), "The Squared Circle Cancellations of Canada", 5th Edition, The Squared Circle Study Group, BNAPS Handbook (2001), pg XX
IK	Ian Kimmerly Stamp Auctions (IKXX-YY is auction #XX, Lot #YY)
JA	John T. Anders 2002 ORAPEX Exhibit - "Imperial Penny Postage 1898"
JG	Jack Gordon notes
JHE	J.A. Hennok Squared Circle Exhibit (Bill Longley book)
ML	<i>Maple Leaves Journal</i> (MLXX-YY is Maple Leaves Whole #XX, pg YY)
MS	<i>BNAPS Map Stamp Study Group Newsletter</i> (MSXX-YY is Whole #XX, pg YY)
MSW	Map Stamp Study Group website
NP	Pelletier, N.A., "Squared Circles on the 1898 Canadian Map Stamps - CAPEX '78", Self published, Toronto (1978)
PC	Private collection/communication
PH	<i>Postal History Society of Canada Journal</i> (PHXX-YY is #XX, pg YY)
RA	<i>Roundup Annex</i> (BNAPS Squared Circle Study Group Newsletter) (RAXX-YY is Whole #XX, pg YY)
RL	Richard Lamb Special Offer List, Lot #XX
RP	<i>Newsletter of the Canadian R.P.O. Study Group</i> (BNAPS RPO Study Group) (RPXX-YY is Whole #XX, pg YY)
RW	Winmill, R.B., "The Evolution of Imperial Penny Postage and The Postal History of the Canadian 1898 Map Stamp", Jim A. Hennok Ltd., Toronto (1982), pg XX
SC	Squared Circle Cancellations website (http://www.ece.uvic.ca/~agullive/squared.html)
SQ	Squared Circles of Canada website (http://squaredcirclesofcanada.com)
TN	<i>The Northerner</i> (PHSC Northern Canada Study Group Newsletter) (TNXX-YY is The Northerner, Item XX, pg YY)
WR	Wild Rose Philatelics (WRXX-YY is sale #XX, Lot #YY)
WS	Weeda Stamps Bidboard (WSXX-YY is bidboard #XX, Lot #YY)

6.3 Possible Hammers on the Map Stamp

The Table below lists 26 Squared Circle hammers for which Map stamp strikes have not been reported (either off-cover or on cover) but are theoretically possible. The hammer was included if a documented use on another stamp issue was reported in the handbook and occurred: (1) “in period”, typically taken to be the 14 months following the issuance of the Map stamp in early DE/98 through JA/01, (2) a month or less outside of these 14 months, or (3) as a late out-of-period strike. Bill Moffatt compiled similar lists in 1977 and 1982 (reported in the *Roundup Annex*, Vol 1, #7, Whole #7, and Vol 5, #1, Whole #26/27, respectively).

#	Hammer	Comments
1	St. Hilarion, QUE	no reports in 1898 but single strikes reported each of 1899 (-/JA ?/99) and 1900 (?/DE/00 latest reported date of use)
2	Canning, NS	although strikes after */OC 11/97 are very scarce, the latest reported date of use is */JA 6/99
3	Halifax, NS, Hammer 1	occasional use in 1897 and 1898, and one strike reported in 1899 (1/JU 22/99)
4	Newcastle Creek, NB	used in 1899 (AP, AU-OC) and 1900 up to the latest reported date of use on -/OC 13/00
5	Danville, QUE	single 1898 strike on -/AP 5/98 and, although no reports in 1899-1902, two strikes reported in 1903/4
6	Levis, QUE	no reports in 1898, but a single strike reported in 1899 on -/JY 17/99
7	Sutton, QUE	single 1898 strike on -/MR 21/98 and, although no reports in 1899-1901, strikes reported in 1902
8	Angus, ONT	the latest reported date of use in Period 2 is -/DE 19/98, therefore used for ~2 weeks after Map stamp issued
9	Brantford, ONT	one strike reported in each of 1899 (?/OC 4/99) and 1900 (2/SP 10/00)
10	Burford, ONT	the latest reported date of use is -/DE 14/98, therefore used for ~1 week after Map stamp issued
11	Cardinal, ONT	the latest reported date of use is -/DE 28/98, therefore used for ~3 weeks after Map stamp issued
12	Forest, ONT	a single 1899 strike was reported on -/JU 17/99 as the latest date of use
13	Grafton, ONT	one strike reported in each of 1899 (-/MY 20/99) and 1900 (-/NO 6/00)
14	Lambton Mills, ONT	one strike reported in each of 1899 (-/JA 5/99) and 1900 (-/NO 20/0 (single digit for year 1900))
15	Markdale, ONT, Hammer 3	although no strikes reported in 1898, one strike reported in each of 1899 (-/JA 30/99) and 1900 (-/AP 9/00)
16	Pembroke, ONT	latest reported date of use -/NO 29/98 is a week prior to the issue of the Map stamp
17	Peterborough, ONT	isolated revivals in 1903 and 1906 after the latest reported date of use in Period 2 on -/SP 19/- (on a stamp issued SP 10/98)
18	Port Dover, ONT	used in Period 5 from -/JY ?/99 to -/OC 3/00?
19	Port Perry, ONT	latest reported date of use in Period 1 is 98/DE 20/-, therefore used for ~3 weeks after Map stamp issued, and 2 1898 “year error” strikes for 1899 (on 2c red QV Numerals issued AU/99)
20	Watford, ONT	there were revivals in 1901 and 1903 after the latest reported date of use in Period 1 on -/DE 2/98 (several days prior to issue of the Map stamp)
21	Windsor, ONT	latest reported date of use is PM/NO 13/99
22	Manitou, MAN	2 strikes reported in 1899 including the latest date of use on -/JY 2/99

#	Hammer	Comments
23	Minnedosa, MAN	although no reports after -/AU 1/98 through 1902, two strikes reported in a 1903 revival
24	Winnipeg, MAN, Hammer 4	although no reports from 1896-1903, used in 1904 and 1905
25	Regina, ASSA	2 strikes reported in 1899 (Period 2) on -/JY 31/99
26	MacLeod, ALTA	the latest reported date of use is -/DE 14/98, therefore used for ~1 week after Map stamp issued

7. Images

Aldergrove -/JA 11/-9



Aldergrove -/F- --/-



London 3/DE 9/98



Point St. Charles -/FE 2(7?)/99



Canso -/J? --/9-



Canso -/JY ??/99



Whycocomagh AM/FE 22/99



Whycocomagh PM/MR 3/99



Yarmouth ?/(2?)0 DE/98



River Louison -/AP 28/99



River Louison -/DE 15/99



Acton Vale -/-- 16/99



Acton Vale -/-- --/--



Acton Vale -/OC 7/99



Farnham -/JA 28/99



Farnham -/JA 28/99



Iberville -/JA 3/99



Iberville -/JA 3/99



Iberville -/FE 3/99



Lotbiniere -/JA --/--



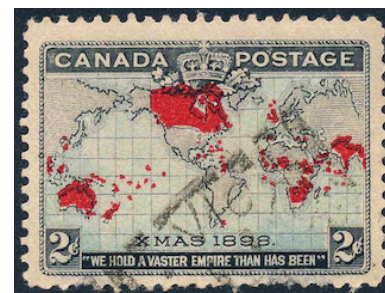
Lotbiniere -/JA 11/99



St. Anne de Beaupre -/MR 14/--



Victoriaville -/A --/--



Acton -/FE 4/99



Acton -/FE 23/99



Acton -/?Y 5/99



Alma -/JY 4/99



Cache Bay -/AU 23/99



Cheltenham -/JA 10/00



Cheltenham -/JA 12/0-



Cobden -/DE 2(0?)/98



Cobden -/OC 27/99



Harriston -/JU 9/99



Harriston -/SP 1-/99



Kincardine -/AP 06/99



Niagara -/MR 16/99



Orillia -/JA 26/99



Kingston 4/DE 7/98



Kingston 4/DE 7/98



Paisley -/A 19/99



Paisley -/JA 21/99



Paisley -/JA 21/99



Rockton -/MR 4/--



Rockton -/P 13/99



Rodney -/D- --/9-



Rodney -/DE 15/99



Strathroy -/DE 19/98



Strathroy -/DE 27/99



Waterloo 1



Waterloo 2



Waterloo 3



Wellington 99/?? 10/-



Williamstown -/DE 24/98



Woodville -/?? 2/??



Woodville -/JA 3/99



Pipestone -/A 11/99



Selkirk AM/JA 3/??



Selkirk AM/JA 12/99



Selkirk AM/FE 8/99



Estevan -/M- --/--



Prince Albert -/JA 4/99

