

# WEST COAST *Express*

British North America Philatelic Society • Pacific Northwest Regional Group

Philately, Fellowship, Fun

Spring 2019

Number 34 part 2

## BLACK OUTS by Peter Fralick

I have been asked a couple of times and did not have an answer for questions re blackouts- those world war II cancels with solid black between two circles or no black just a blank space between the lines.

Basically people would ask why if the idea was to keep an enemy from knowing the origins of our mail did we allow many of them to have return addresses. I hit the Google button and discovered that our member, Ron Leith, wrote the definitive article on the subject some years ago for the postal history group.

So I contacted Ron and very quickly he gave me the clearly accurate description as to why. I quote his reply. Many thanks Ron.

“You will find town return addresses only on public mail. What the Blackout accomplished was to hide originations of military mail that was also posted at town post offices. Showing soldier’s unit locations and sailor’s ship names on their letters home was prohibited, thus the Blackout scheme avoiding the need for a separate postal system for military mail.” This answers the most asked question.

However, now I was asked why some of them were really “blackened out” and most were just a blank space between the two circles. For this I suggest one ask Ron.

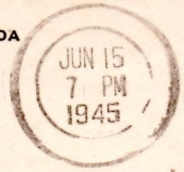
There are some differences which I show below. Most of the cancels were the two circles either black or bare with a wavy line cancel over the stamp(s).



WESTERN BRIDGE AND STEEL FABRICATORS LTD.

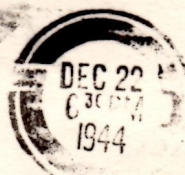
195 WEST 1ST. AVENUE

VANCOUVER, - - CANADA

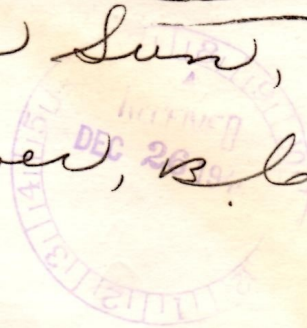


Messrs. Gordon & Belyea Ltd.  
101 Powell Street  
VANCOUVER, B. C.

*F. J. Gacchini  
Billmor, B.C.  
Via R. Rupert.*

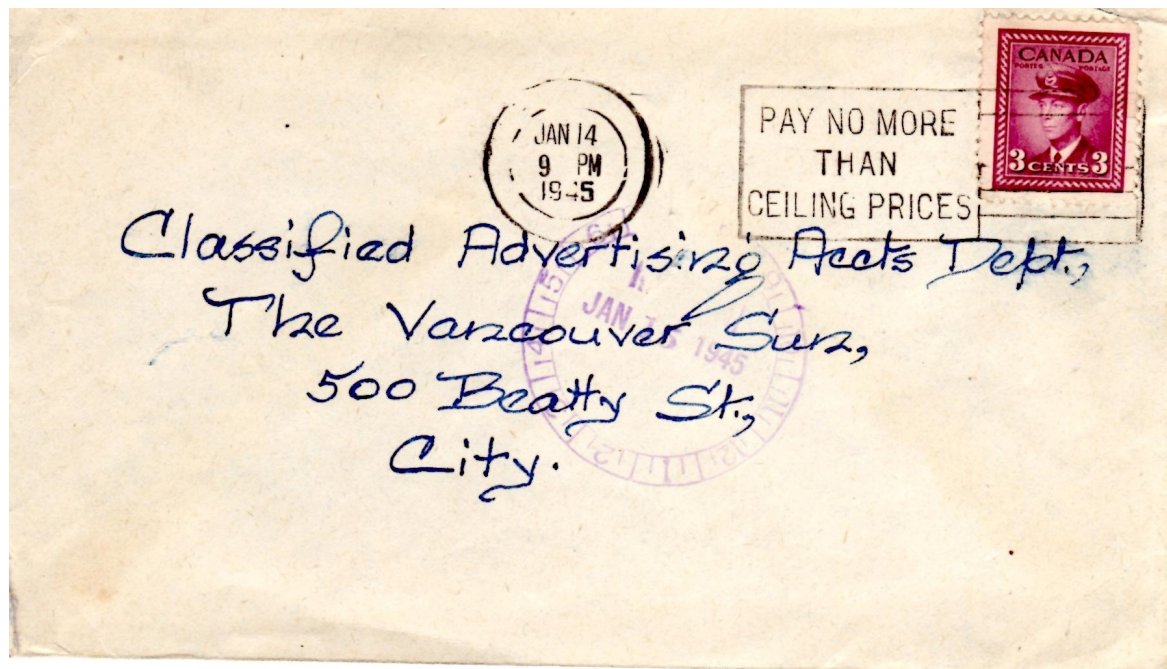


*Vancouver Sun,  
Vancouver, B.C.*

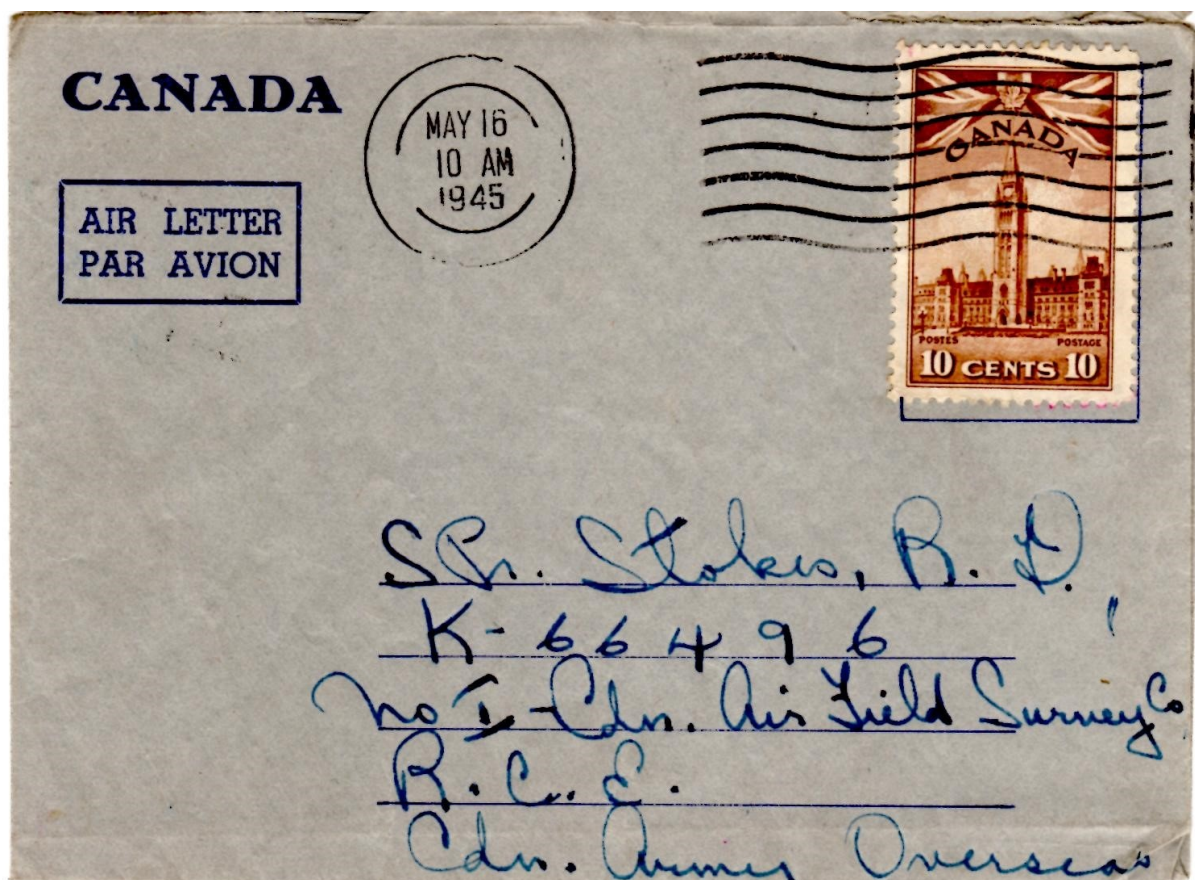




However, some have a slogan cancel over the stamps.



This one is military mail with the black out.



These two have return addresses which are quite interesting . I wonder if you can tell why they are of special interest?

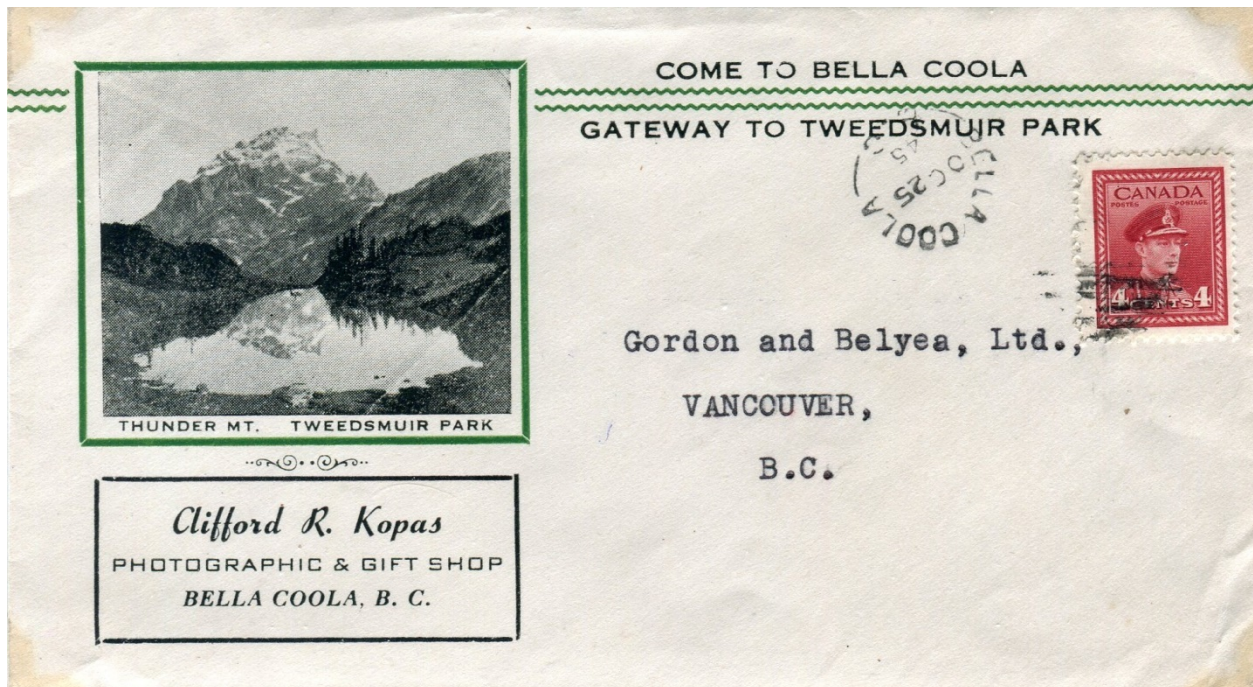




## Clifford Kopas

Clifford Kopas was a well-known photographer of the BC North and Central coast region, producing many postcards of the areas in and around Bella Coola. He opened his store in Bella Coola about 1938.

Here is a nice copy of his business stationery which served to promote his business, as well as tourism in the area. This cover features one of his photos in Tweedsmuir Park, and was mailed from BELLA COOLA to Vancouver on October 25<sup>th</sup> 1945 as shown on the Split Ring cancel.



## Early Machine Cancels - Bill Aaroe

25/3/19

As a collector of Slogan Postmarks I have a well used copy of Cecil Coutts' Slogan Postmarks of Canada. In the 2nd edition he included a chapter introducing the various types of machines used by the Post Office Department which sparked my interest in them. While I have found articles that detail one or the other of the machines I haven't found one that serves as a primer. I do not intend to delve into the Slogan Postmarks produced for these machines as Cecil Coutts' book serves that purpose well.

The first mechanical cancelling device used in Canada was the co-invention of Martin Van Burren Ethridge and Henry Waite of Mass, USA in 1895. Machines were soon on trial at locations in the US including Boston. In April 1896 the process began to set up a Canadian firm to sell this machine; the Imperial Mail Marking Machine Company was officially established at Montreal on October 22, 1896. The first Canadian use of one of these machines was on March 10, 1896 at Montreal; which apparently proved successful as four more machines were added at Montreal and another at Ottawa by June 1896.

After Ethridge and Waite had a parting of the ways Ethridge received a Canadian patent on October 28, 1896 for a new machine and in the process established the Bickerdike Mail Marking Machine Company to market it. Named the Bickerdike M.M.M. Co. probably in consequence of financial support from

Robert Bickerdike a prominent Canadian businessman at the time. Bickerdike machines gained a five year lease arrangement with the Post Office Department lasting from 1897 to 1902. Although at least one Imperial machine stayed in use during this period at Montreal.

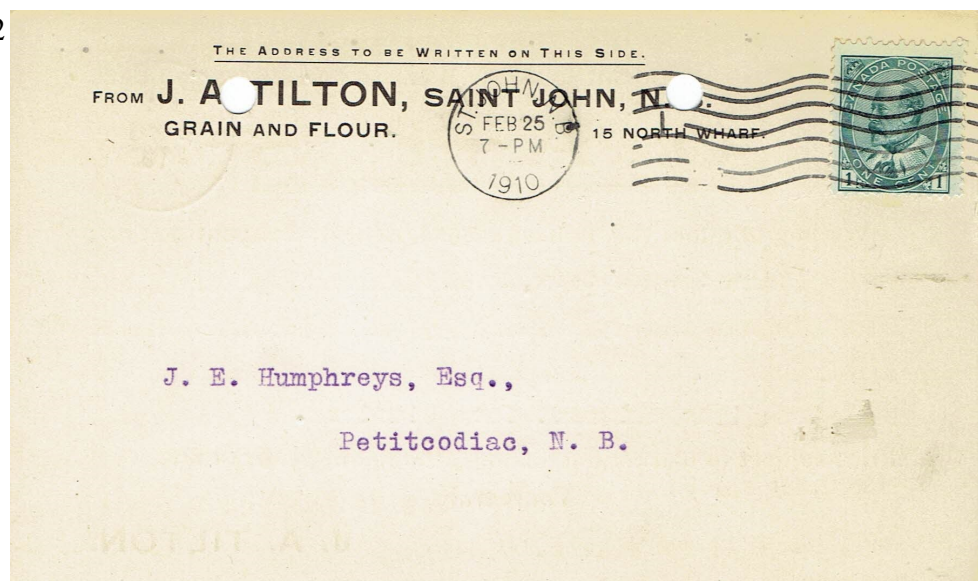
Figure 1 shows the 'plain' version of the cancels from these two machines. The diagnostic difference is that the Imperial cancels have wavy killer bars while the Bickerdike cancels have straight. Both of these firms produced flag cancels for their machines and additionally special versions for Queen Victoria's Diamond Jubilee.



Figure 1

Figure 2 illustrates the basic flag cancels from the two companies. The diagnostic difference is that Imperial cancels had a vertical flag pole while the Bickerdike cancels the flag pole angles to the left. I don't own examples of the special Jubilee Flag cancels, but the diagnostic difference would seem to be that the Imperial cancels exhibit no flag pole while the Bickerdike cancels do.

Figure 2



The Post Office Department eventually became dissatisfied with the Bickerdike machines and they were replaced by those of the International Postal Supply Company of Akron Indiana although Bickerdike machines remained in use at Hamilton until October and at Montreal and Ottawa until November 1902.



International machine cancels are identifiable by period of use, by the wider separation between the dater and killer (roughly 9 mm) and finally by the coding in the killer portion of the cancel.

In figure 3 the 1 indicates that this was cancelling machine #1 at Vancouver and the R is one of four codes, C, D, R & T, which appear or have been removed leaving a gap, figure #4.

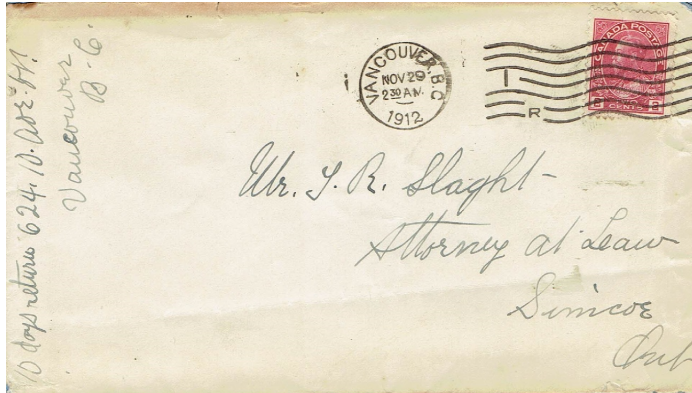


Figure 3

Figure 4



The four letter codes stand for 'Collected' ie deposited at a post box outside of the processing post office; 'Deposited' ie mailed at the post office itself; 'Received' ie the item was received from another post office for delivery and 'Transit' ie received from another post office and being forwarded onward for delivery elsewhere. As changing the codes took time; which could exceed the amount of time needed to process the mail eligible for them, they often remained in place for extended periods or were simply removed. In 1919 the Post Office Department began cancelling the rental arrangement for International machines.

The Universal Stamping Machine Company of Stamford Connecticut had installed some of their model 'G' machines for test purposes in early 1919. These machines were electric and capable of handling up to 750 pieces of mail per minute which exceeded the International machine's capabilities. The contract with Universal went into effect July 1, 1919 costing \$220 per year per machine. At the same time the Post Office Department placed eleven machines from the Columbia Postal Supply Company of Silver Creek New York into use, but as the Columbia refused to lease their machines they never grew their presence; these machines having been purchased remained in use for many years.

Figure #5 pictures a Universal machine cancel of a printed matter item and a late use Columbia machine cancel. The diagnostic difference is the narrower separation between the killer and dater of the Columbia machine cancel.

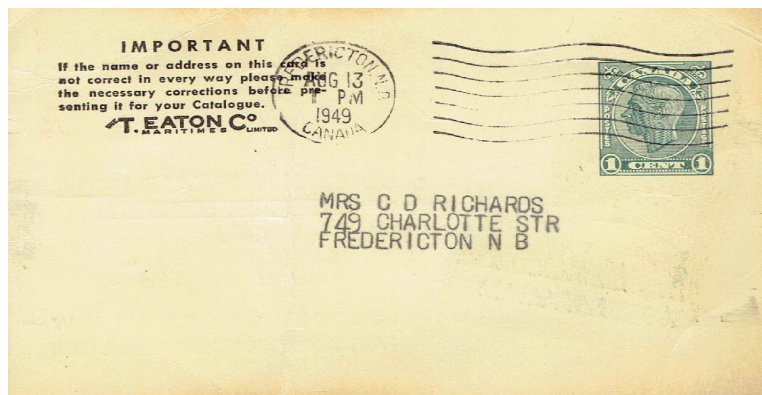


Figure 5

In 1927 the Post Office Department entered into a contract with J.O. Lamoureux of Montreal to purchase 25, made in Canada, cancelling machines at \$2500 each. This was a large investment given the Universal machines were then being rented at \$200 per year. Initially referred to as Lamoureux machines they came to be known as Perfect machines. Lamoureux needed until 1930 to complete the initial order, but as their use proved satisfactory a total of 132 were delivered by the end of 1935. As these were 'owned' machines they remained in use for many years helped that dies from Pitney Bowes-Universal could be used in them unlike the Columbia machines which for either technical or patent reasons required that only dies they produced be used. Figure 6 is a late use of a Perfect machine cancel hybrid with what is probably Pitney Bowes produced dater.



Figure 6

Perfect machines came in only one size and while Universal machines came in two sizes all of these were too large for use by smaller post offices. Once Universal merged with the Pitney Bowes Meter Machine Co they had a machine, the Model K, that could be used by smaller post offices. The first dozen were in use by the end of 1937.

Figure 7 pictures a cover processed by a Model K; which was a hand powered cancelling machine capable of handling about 250 pieces of mail per minute. The Model K's also had the advantage that they could be adapted to electric power if volume supported it.



Figure 7





Figure 8

Figure 8 shows two Pitney Bowes machine cancels used in Victoria in 1950 & 1952 typical of the era although slightly different in their killer bar arrangements. Pitney Bowes machines continued to predominate into the 1970's when increasing competition provided the Post Office other types of machines; however I will leave a review of those machines for another time.

It should be noted that from time to time the Post Office tested other machines such as Geary machines. These tests were limited and identifiable examples scarce.

References - The Flag Pole Volume 9, No. 3, March 1996; Kingston Stamp Club Newsletter Volume 3, No. 3, Spring 2009; PHSC Journal No. 18, August 1980, No. 37 March 1984, No. 47 September 1986 and No. 120 December 2004; Slogan Postmarks of Canada 2nd edition 2002.

## BNAPS Annual Meeting

September 25 & 26 2019

LANGLEY, BC

Looking forward to our next event.

This will be a little different format from what has been enjoyed historically. One of the things we found was that the costs of catering is beyond the palate of most of our diners. Accordingly, we are going to forgo the usual banquet buffet and enjoy the hotel buffet which has much wider variety and costs \$21 per person versus \$69 delivered to your own banquet hall.

Wednesday evening at 7:00 PM will be our meet and greet in the hospitality suite, room 300. Drop in for tea/coffee/ light refreshments and desert. Share a few laughs – get reacquainted with friends.

Thursday AM, our learning sessions will kick off at 9 AM. We are planning on 6 presenters, 3 in the AM and 3 in the PM with a lunch break. The morning session will include coffee and a light snack.

Lunch is “on your own” with the hotel restaurant being the obvious choice. Lunch break is an hour.

We will reconvene at 1 PM for 3 additional sessions ending at 4 PM. 4 PM to 5 PM will be our annual meeting, elections, approval of minutes, etc.

We will take a break for dinner, which will be the hotel buffet at \$21.00.

We will reconvene at the meeting room at 7 PM for a keynote address and a spirited auction. Please bring a couple of items that would be of interest to our BNAPs members. All auction sales are cash only, with 10% auction commission to the event, 90% hammer price to the consignor.

We expect to conclude by 9 PM

Special pricing on rooms is available using registration code

We look forward to seeing you in Langley 2019

Your Event Team

Gary and Wanda Fisher

**British Columbia's Centennial Cake** It is not uncommon to find copies of this postcard, depicting the birthday cake baked in Nanaimo for BC's 100 anniversary in 1958.





Here is the information from the back of the card

# POST CARD

World's Biggest and Most Beautiful Birthday Cake, 10,000 lbs. Cut by HRH PRINCESS MARGARET at Nanaimo, July 16th, 1958.  
Planned and produced by City of Nanaimo Centennial Committee, baked by Canadian Bakeries Ltd., Vancouver, B.C.  
Type: Dark Fruit. Measurements: Base 20 ft. square, plus four tiers 16, 12, 8, 4 ft. square. Topped by a replica of St. Edward's Crown (Coronation). Over one ton of sugar was used in the elaborate decorations. Cake was cut into 100,000 souvenir slices and packed in small boxes for sale. Mail enquiries to "CAKE", Nanaimo, B.C.

POST CARD COPY

\* \* \* \* \*

\* No written message 2c \*

\* \* \* \* \*

\* With written message 4c \*

\* \* \* \* \*

AIR MAIL TO U.S.A.

\* with written message 7c \*

\* \* \* \* \*

What is uncommon however is to find a surviving intact copy of the mailer used to ship souvenir pieces of the 10,000 lb. cake. The copy below was mailed Nanaimo to Horseshoe Bay, featuring BC's 5 cent Centennial stamp cancelled with the Nanaimo roller cancel.



<http://www.pipexstampshow.org/>

**On behalf of**  
**Northwest Federation of Stamp Clubs**  
and  
Oregon Stamp Society  
Portland Philatelic Exhibitions presents

# PIPEX 2019

10, 11, 12 May, 2019

Red Lion Hotel on the River, Jantzen Beach, Portland, OR.

PIPEX is an American Philatelic Society World Series of Philately event

- **40 booth philatelic dealer bourse**
- **Competitive display of 3800 collectors' album pages**
- **Show Auction by Harmer-Schau Auctions Northwest**
- ***Grandma's Attic* (collection evaluations)**
- **National and regional philatelic society participation**
- **Seminars, lectures, and meetings**
- **Free admission**





## **Mast Head**

### **Chair**

**Mark Oakley - 7388 L & A Road**

**Vernon, BC V1B 3S6**

**250 878 2700**

**[BNAPS-PNW@shaw.ca](mailto:BNAPS-PNW@shaw.ca)**

### **Secretary**

**Carol Oakley - 7388 L & A road**

**Vernon, BC V1B 3S6**

**250 878 2700**

**[BNAPS-PNW@shaw.ca](mailto:BNAPS-PNW@shaw.ca)**

### **Treasurer**

**Bill Verbruggen**

**5501 20 Street,**

**Vernon, BC, V1T 7T2**

**250-558-5186**

**[verbill@dccnet.com](mailto:verbill@dccnet.com)**

### **Event Co-ordinator**

**Gary Fisher - #101 3606 25th Avenue**

**Vernon, BC V1T 1P3**

**[gwfish@shaw.ca](mailto:gwfish@shaw.ca)**

**250-545-6375**

### **Newsletter Editor**

**Peter Fralick - Box 34**

**Hagensborg, BC V0T 1H0**

**[peterfralick@outlook.com](mailto:peterfralick@outlook.com)**

**250-982-2474**



The Coast Cascades Casino and Conference Centre in Langley.

## **More Lost Words from our Childhood:**

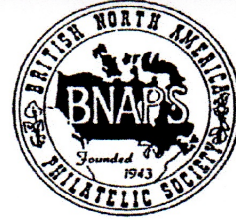
**We wake up from what surely has been just a short nap, and before we can say, "Well, I'll be a monkey's uncle!" Or, "This is a fine kettle of fish!" We discover that the words we grew up with, the words that seemed omnipresent, as oxygen, have vanished with scarcely a notice from our tongues and our pens and our keyboards.**

**Long gone: Pshaw, The milkman did it. Hey! It's your nickel. Don't forget to pull the chain. Knee high to a grasshopper. Well, Fiddlesticks! Going like sixty. I'll see you in the funny papers. Don't take any wooden nickels. Wake up and smell the roses.**

2019 BNAPS Pacific North West Regional Group  
Annual Conference September 25 and 26 2019

**LANGLEY, BC**

**REGISTRATION**



Primary Name: \_\_\_\_\_  
Spouse Name: \_\_\_\_\_  
Guest - Non BNAPS: \_\_\_\_\_  
Address: \_\_\_\_\_ phone: \_\_\_\_\_  
City/Prov.: \_\_\_\_\_ email: \_\_\_\_\_  
Postal Code: \_\_\_\_\_

**Registration Deadline  
August 15 2019**

**Hotel:** Coast Cascades Casino Langley  
20393 Fraser Highway, Langley, BC  
Reservations: 1-604-530-1500 or book online at their website  
Reservation code: Pacific North West Federation of Stamp Clubs  
GF7986 Mention reservation code to obtain preferred rate  
**Special Rate available at \$125.00 for 2 queens or 1 king**  
All rooms are non smoking. Check with hotel on pet policy

**I would like to register for:**

	# people	@	total	
<b>Wednesday Social (Sept 25)</b>	_____	\$	10	_____ held in hotel at Hospitality Suite

**Thursday Sessions (Sept 26)**

BNAPS Members	_____	\$	20	_____
Spouse	_____	\$	5	_____
Guests-Non BNAPS	_____	\$	25	_____

\_\_\_\_\_ Enclose your payment

Send your registration form and cheque payable to BNAPS-PNWRG to:  
101, 3606 25 th Avenue, Vernon, BC V1T 1P3  
You may also email your registration to [gwfish@shaw.ca](mailto:gwfish@shaw.ca) or pay by e-transfer  
?Questions? call Gary (250) 545 - 6375 OR Mark (250) 878 - 2700

Net proceeds of this event go to:  
**Gerald E. Wellburn Philatelic Foundation**